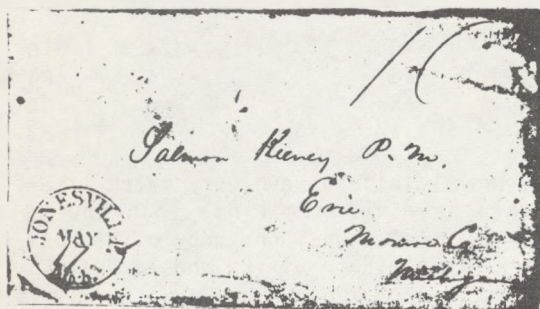




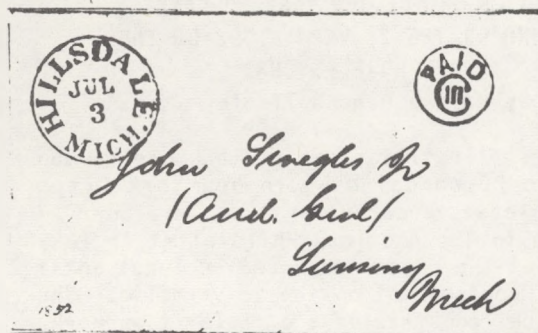
Cancellation Club NEWS

VOL. 3 - NO. 11 - WHOLE NO. 30

SEPTEMBER - 1957



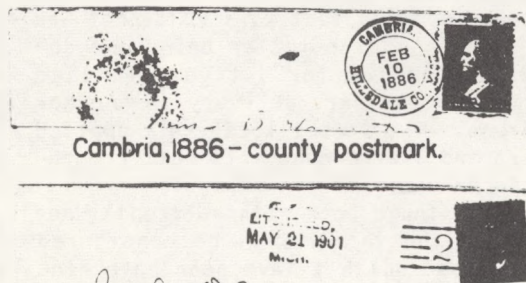
Jonesville stampless cover.



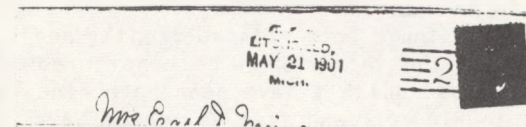
Hillsdale, 1852 - PAID III coin type marker.



Hillsdale College illustrated cover, 1886.



Cambria, 1886 - county postmark.



Litchfield, 1901 - R. F. D. cancel.

SEE PAGE 78.

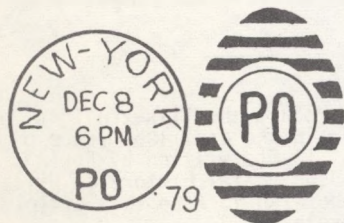


FIG. 1

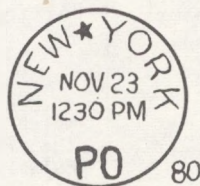


FIG. 2

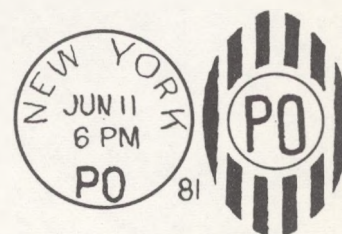


FIG. 3

SEE TINSLEY ARTICLE, PAGE 78.

THE U S CANCELLATION CLUB NEWS

Published six times a year, January, March, May, July, September, and November by the U S CANCELLATION CLUB for the benefit of members.

Subscription Price to Others: \$1.50 per year 25¢ per copy.

ADVERTISING RATES

Full Page.....	\$15.00
Half Page.....	8.00
Quarter Page.....	4.50
Column Inch.....	1.00
Adlets 2¢ per word, min.	50¢

Address communications to the Club Secretary,
C. D. Root, 855 Cove Way, Denver 9, Colorado.

SOME NOTES ON THE NEW YORK PO CANCELS
AS FOUND ON THE 2¢ VERMILIONS OF THE
BANK NOTE ISSUES

By Walton Eugene Tinsley

Figure 1 illustrates one of the more common forms of the PO cancel used in New York City, starting at least as early as 1878. Mr. Burr in his articles in The American Philatelist in 1935 indicates that the cancel was used at least until 1889, but of course, not on the 2¢ vermilion. The complete cancel consists of a circular town mark, an elliptical killer, and a year date between the town mark and killer.

It has been reported that this PO cancel was used on drop letters, a drop letter being one deposited in a post office for delivery in that office, and not for ordinary delivery to another office or address. The 2 cent local rate applied to drop letters and the PO cancel is most commonly found on the 2¢ denomination stamps.

The killer is found both with horizontal and vertical bars and the former will be considered first. All of those which I have seen have nine bars as shown in Figure 1 and five varieties have been identified, the variations occurring in the size of the circle enclosing the letters and in the size of the letters themselves.

TABLE I
PO Horizontal Bar Killers

Type	Circle Diameter in mm.	Letter Height in mm.	Year Dates seen
H1	12	5½	not used (found in hard paper stamps)
H2	12½	5¾	78,79
H3	12	7½	80
H3a	12	P-7, P-7½	79 (short P variety of H3)
H4	12	7	82,83,84

The appearance of the letters provides as easy a method as measuring for identifying the types, once a few copies of each are available for comparison. The H1 letters have heavier lines and are more compact than the H2 letters. The H4 letters have thinner lines than the H3 letters. H3a is as common as H3.

Figure 2 illustrates a variety of the town mark used with an H3 killer. The dash between NEW and YORK has been replaced by a star. The significance of the star, if any, is not shown.

The vertical bar killers seen all have six bars and four varieties are known in the circle and letters. Note that there is no mark between NEW and YORK in the town mark, in contrast to the dash or star of the town mark used with the horizontal bar killer.

TABLE II
PO Vertical Bar Killers

Type	Circle Diameter in mm.	Letter Height in mm.	Year Dates Seen
V1	12½	7-3/4	78,79,80
V2	12	7-3/4	81,83
V3	12	7	82
V4	11½	7	83

The V1 letters have very thick lines. The V3 letters have thinner lines than the V2 and V4 letters. I have only one copy of V3, but this is a very clear, sharp strike and is definitely different.

The above information is based on cancels on 2¢ vermilion in my collection and hence the article is by no means intended to be a complete coverage of the subject. Comments, suggestions, criticism and additional information will be welcome and are solicited. You may correspond directly with the writer or with the Editor.

LONG BEACH

At the 63rd annual convention of SPA held at Long Beach, Calif. in August USCC Certificates were awarded as follows:

Class Award: Roy C. Mitchell, Los Angeles; 19th Century Cancellations.
Gold Medal: Capt. Robert W. Scherer, Oklahoma City; Cancellations of Iceland.
Silver Medal: C. E. Seaver (#202), So. Charleston, W. Va.; 20th Century Fancy Cancels.

Dr. C. S. Hitchins (#130) also won a Silver Medal in the 19th Century USA Section for his 5¢ Blue Taylors and Stephen M. Farndell (#371) a Gold Medal for his "Postal History of Long Beach, California".

FRONT PAGE

On the front page we reproduce the illustrations which accompanied an article in the Jan. 1957 issue of the PENINSULAR PHILATELIST. It was written by Edwin E. Puls (#60) and was titled, "The Postal History of Hillsdale County". Any of you who wish to read this article may obtain it from your Secretary.

LIBRARY

Item #1 in our Library, the two volumes of Cancellation articles from STAMPS, which has been in the possession of an ex-member for about two years has returned. Although it appears worn all of it seems to be there. The increases in postal and express rates during the past few years have made it necessary that members wishing this item pay transportation both ways on it. Shipping weight is 13 pounds.

When in Southern California

Visit

C. H. BERKSON

213 West 4th Street
Los Angeles, Calif.

FOR

STAMPS

COVERS

COINS

20 YEARS ON 4TH STREET

CASH FOR COVERS FROM
ILL., MICH., INC., OHIO, WIS.

STAMPLESS TO 1910

ASDA ALEX ULLRICH ASDA
1443 PLEASANT LANE
GLENVIEW, ILLINOISI WILL PURCHASE OR SELL THRU AUCTION,
COVERS, CANCELLATIONS, POSTCARDS, ENTIERES
Our Large Stock is Available on Approval.

STAMP MART

OTOKAR CERNY

111 W. Jackson Blvd., Chicago 4, Ill.

OLD U. S. COVERS
ARE MY SPECIALTY!PARTICULAR ATTENTION GIVEN TO U. S. C. C.
MEMBERS SPECIAL NEEDS IN OLD U.S. COVERS.
APPROVALS GLADLY SUBMITTED ON REQUEST.WRITE FOR MY FREE SPECIAL LISTS OF OLD US
COVERS.

E. N. SAMPSON

1508 WAVERLY PLACE

LYNCHBURG, VA.

NEW MEMBERS

- 420 Julien D. Martin, 609 Chestnut, Wilmington,
No. Carolina-Confederate Covers, U.S. Stamp-
less Covers, 1st Day Covers, USA Coins &
Currency.
- 421 Jonathan Wolfe, 7700 Cregier Ave., Chicago
49, Ill.-US Inc. reg. issues, postal cards,
revenues, etc., 19th & 20th Century Cancel-
lations, British No. Amer.
- 422 I. J. Wright, 721 Park Towers, Houston 25,
Tex.-U.S. Postal History, 19th & 20th Cent.
- 423 Rudolph V. Holtzman, 505 Main St., Watson-
town, Pa.-U.S. Slogans socked-on-the-nose
(regular issues, Commems & covers), Dater
Circles(S.O.T.N.), Roller type Parcels Post
cancels (by states) on regular issues.

CHANGE OF ADDRESS

- 28 E. N. Sampson from Lynnfield Center, Mass.
to 1508 Waverly Place, Lynchburg, Va.
- 281 Wm. P. James from Schenectady, N.Y. to
19975 Fairway Drive, Grosse Point 36, Mich.
- 390 Douglas Lee from Evanston, Ill. to 316
Telegraph Road, Lake Bluff, Ill.

POSTAL HISTORY EXHIBIT

At the recent Postal History Show held at
the National Philatelic Museum in Philadelphia
Hugh J. Baker Jr. (#322) and Dr. C. S. Hitchins
(#130) received first awards, Mr. Baker for his
exhibit of Indianapolis Postal History and Dr.
Hitchins for his 5¢ Blue Taylors. Kenneth H.
Priestley(#388) received a third award for his
Michigan exhibit.

POSTAL MARKINGS

USCC USCC owns an incomplete file of POSTAL
MARKINGS. Of Volume 1 we have #s 1, 2 & 3. Of
Vol. 2 we have #s 7, 8 & 9. Of Vol. 3 we have
#s 10 & 11. Of Vol. 4 we have all but #s 2, 5, 6
& 7. Of Vol. 5 we have all but #s 3, 9 & 10. Of
Vol. 6 we have all but #2. Vol. 7 is complete.
Of Vol. 8 we have all but #11. Of Vol. 9 we have
#s 8, 10, 11 & 12. Of Vol. 10 we have all but #7.

This file was presented to the Club by Geo.
Hale. We would welcome donations to the Club of
any of the missing numbers. Also we are making
those we have available to the members in the
same manner as other items in the Library.

SALES DEPARTMENT NOTES

In forwarding circuits please use more care
to include the report blanks. Several times re-
cently members have received circuits with none
enclosed. If this happens to you please just make
your report on any handy slip of paper noting
the number of the circuit and listing purchases.

In sending payment for small amounts please
send either currency & coins or unused USA stamps.
Regular postage stamps up to and including the
50¢ value are O.K.

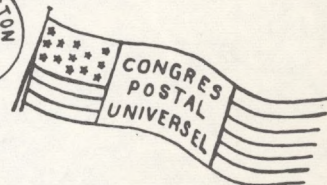
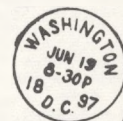
Also please try to use stamps of philatelic
value in forwarding circuits. All of us are stamp
collectors and some of the very common stamps
are of interest if they happen to get the right
sort of postal markings. Most of you do use
Commemorative stamps on letters for which please
accept the thanks of your Sec'y.

There is a possibility that we will be away
for two or three weeks late in Sept. or early in
Oct. Mail will be cared for but not acknowledged.



FOREIGN U.S. POSTAL SLOGANS

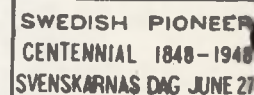
MOE LUFF



Liberal, Kans. is the first city in the U.S. to make use of a Postal slogan cancel bearing the name of a foreign city and country; LIBERAL, KANS. OLNEY, ENG. INTERNATIONAL PANCAKE RACE (with an illustration of a woman racing across the Top of a Globe holding a Frying Pan and flipping a Pancake); in use from January 1 to March 5, 1957.

Panama is the only other foreign country to appear by name in 4 slogans; PANAMA CALIFORNIA EXPOSITION SAN DIEGO-1915 (San Diego, Calif. 1913-15); PANAMA CALIFORNIA INTERNATIONAL EXPOSITION AT SAN DIEGO 1916 (20 cities 1916-17); WORLD'S PANAMA PACIFIC EXPOSITION IN SAN FRANCISCO 1915 (15 cities 1911-16);

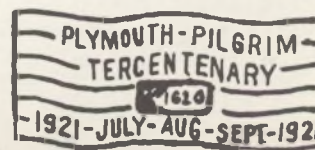
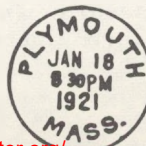
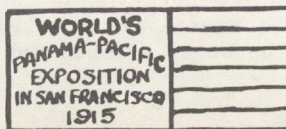
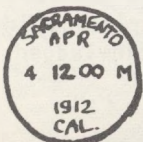
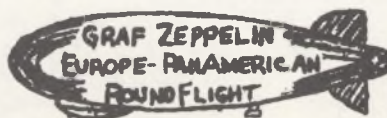
Europe in general is represented by a slogan and also the European Alps; GRAF ZEPPELIN EUROPE-PAN AMERICAN ROUND FLIGHT (Lakehurst, N.J. 5/31/30; New York, N.Y. 6/18/30); ALPINE EVENTS WORLD'S SKI CHAMPIONSHIP FEB. 1950 ASPEN, COLO. (1949-50).



Four different Nationalities are commemorated by U.S. slogans; HAWAII CHINESE CENTENNIAL WEEK AUG. 10-18, 1952 (Honolulu, Hawaii-Aug. 1952); THREE HUNDREDTH ANNIVERSARY FIRST FINNISH SETTLEMENT IN AMERICA (Ches-ter, Pa. 1938); NORSE CENTENNIAL 1825-1925 JUNE 6-8 ST. PAUL, MINN. (1925); SWEDISH PIONEER CENTENNIAL 1848-1948 SVENSKARNAS DAG JUNE 27 (St. Paul, Minn. 1948).

England had previously been represented, by the Pilgrims, in a slogan used at Plymouth, Mass. in 1920-21; PLYMOUTH-PILGRIM TERCENTENARY 1921 -JULY-AUG-SEPT-1921; and Spain by one of its explorers; LANDING OF PONCE DE LEON ST. AUGUSTINE FLA. APRIL 4-6, 1923 (1922-23).

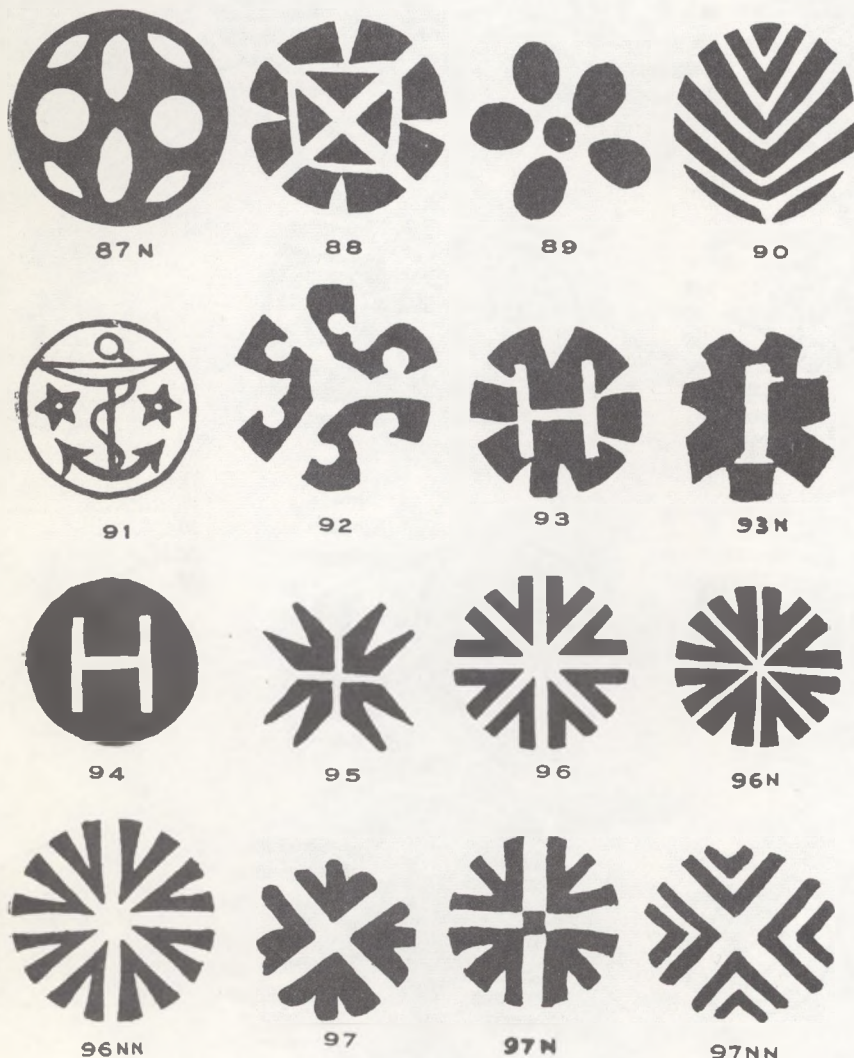
The Spanish language appears in 4 slogans, Swedish in 1 and French in 1; AIR MAIL CORREO AEREO SAVES TIME AHORRA TIEMPO (San Juan, P.R. 1929-1935); COOPERE UD AL BIENESTAR DE SU PUEBLO AYUDANDO A LA SIEMBRA DE ARBOLES (Cooperate for the welfare of your town by planting trees) (San Juan, P.R. 1924); MESA VERDE (Green Table) NATIONAL PARK (Durango, Colo. 1920-22); FIESTA DEL MUCHACHITA (Feast of the Little Girl) IN SAN JOAQUIN VALLEY APRIL 15-MAY 5, 1957 (Delano, Calif. 1956); CONGRES POSTAL UNIVERSEL (Universal Postal Congress) (Washington, D.C. 1897). (Swedish - see under Nationalities).



New York Foreign Mail Cancellations 1870-1876

By EDWIN MILLIKEN

Florals, Letters, Cross Roads



A COLLECTION to include reasonably good examples of approximately one-third the group may readily be made. Such a collection with fair luck will include a number of the more attractive designs and should not involve long search nor undue cost. But if centered strikes on very fine stamps are demanded the collector will find out for himself better than the writer can advise him how far, how fast and at what cost such a special collection can be made. Collectors of 19th Cent. U. S. who wish to fill part, if not all, 1870, 1873 and 1875 spaces with specimens of these cancellations can do so with much less search or outlay and they will have the best looking lot of cancellations possible to find on these values.

Rarest Types

Nos. 2, 3, 7, 11, 12, 15, 18, 21, 23, 24N, 25, 26N, 27, 29, 30N, 31, 35A, 39, 40, 42, 42A, 42N, 42NN, 44, 45, 46, 47, 48, 49, 53, 54, 56, 59, 60, 63, 64, 66N, 67, 69, 70, 71, 71N, 71NN, 72, 73N, 73NN, 74N, 75, 76, 79, 80, 80N, 81, 82N, 82NN, 86, 87, 87N, 88, 89, 90, 91, 93, 93N, 94, 96N, 96NN, 97NNN, 99N, 99NN, 100 in black letters 7 and 9 Mil. high.

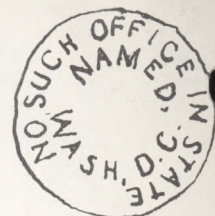
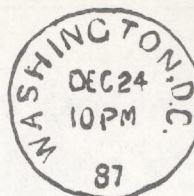
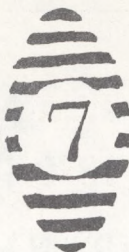
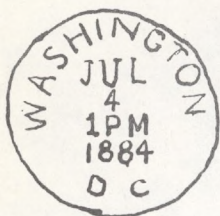
Scarce Types

Nos. 5, 6, 6A, 7N, 14, 17, 19, 22, 33, 36, 37, 43, 50, 55, 58, 62, 74, 84, 85, 92, 98NN, 100 in red, 101.

Commoner Types

Nos. 1, 4, 8, 10, 10A, 13, 16, 20, 28, 35, 38, 41, 51, 51A, 52, 65, 83, 95, 96 in various sizes thin and thick lines and wider spacing used 1872-6, 98, 98N, 99, 102 to 116 inclusive.

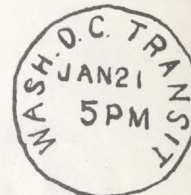
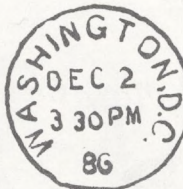
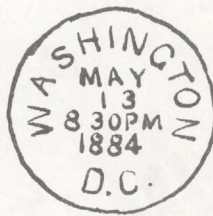
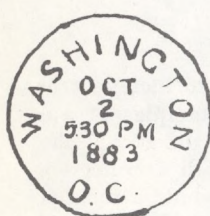
(This is the 7th of a series of articles)



Set 1-5 on 210
1-7 on 34 Greens.

Set 5-6-7

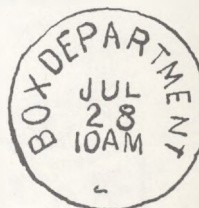
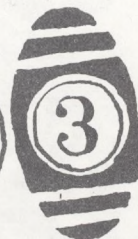
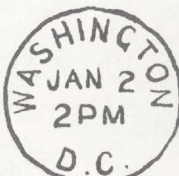
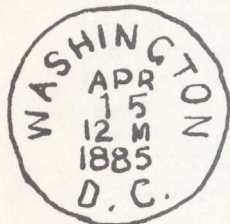
Set 5-6-7



Set 1-6
Fish tail Numerals

Set 1-6
Fish Tail Numerals

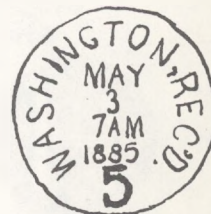
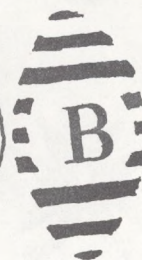
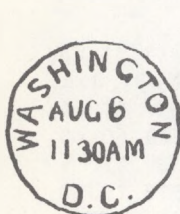
Set 1-4



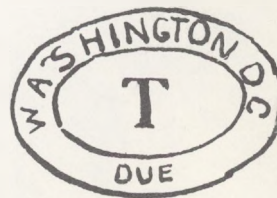
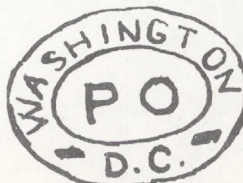
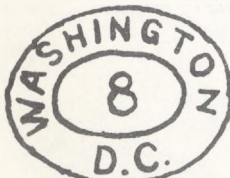
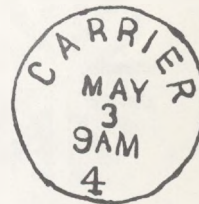
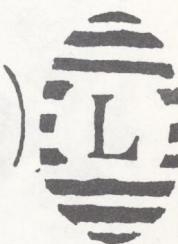
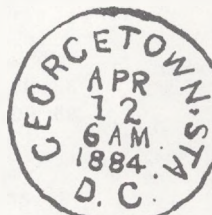
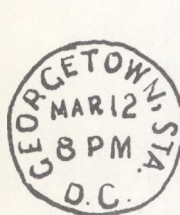
Single Numeral
Probably from an older set

Set 1-7

Set 1-7



Set 1-7



Numerals 3, 4, 8, 9.

General Post Office

Set A-B

Registered Mail.