



# Cancellation Club NEWS

VOL. 4 - NO. 7 - WHOLE NO. 38

JANUARY - 1959



Fig 44/4



71



72



73



74



75



76



77



78



79



80



81



82

ILLUSTRATIONS FOR THE WASSERMAN ARTICLE ON PAGE 48.



## THE U S CANCELLATION CLUB NEWS

Published six times a year, January, March, May, July, September, and November by the U S CANCELLATION CLUB and sent free to members.

Back Numbers 25¢ each to members.

Subscription price to others: \$2.00 per yr.  
35¢ per copy.

## ADVERTISING RATES:

Full page ..... \$15.00  
Half page ..... 8.00  
Quarter page ..... 4.50  
Column Inch ..... 1.00  
Adlets 2¢ per word, min. 50¢

Address communications to the Club Secretary  
C. D. Root, 855 Cove Way, Denver 9, Colorado

## IFPEX 1959

U S CANCELLATION CLUB is furnishing a Certificate to be awarded at the 10th Annual Convention and Exhibition of the Illinois Federation of Stamp Clubs to be held at Rockford, Ill. April 18-19.

S. D. Reed (#436) is General Chairman and Bob Pritchard (#454) will be the program speaker.

Cacheted Envelopes franked with a current Commemorative stamp and postmarked with a special Exhibition Handstamp will be available at 20¢ each or three for 50¢. Unserved Cacheted Envelopes, 15¢ each or two for 25¢. Write direct to Tom Beddoes, 318 Alliance, Rockford, Ill. All Bourse tables have been sold to dealers from several states. Anyone wishing to exhibit should write to Robert Rosell, 540 15th Ave., Rockford, Ill.

At the Convention and Exhibition of the Wisconsin Federation of Stamp Clubs held at Waukegan, Ill. in May the USCC Certificate was awarded to Douglas Lee (#390) for his exhibit of U. S. Cancellations. Arthur VanVlissingen (#49) also received an award for his "Wisconsin Postal History".

From Emerson W. Eddy (#32) we have learned that of the Miles illustrations on the front page of the November NEWS #2 is from Alexandria, Va., #4 from Eliria, Ohio and other places and #1 was used at several offices.

## ADDITION TO LIBRARY

Through the kindness of Joe M. Schelly (#426) we now have a priced catalogue of John Fox's sale of the George B. Wray Collection. Members wishing to consult this catalogue may get it by writing the Secretary in the usual way.

## STANDARDIZED HAND STAMP CANCELLATIONS ON THE BANK NOTE ISSUES

By Dr. Robert S. deWasserman (#418).

Illustrations on front page.

## TYPE C - SHADED LETTERS

This was till now a very small class, as my honorable predecessor illustrated only four types: two "H" in 4-ring targets, and a "G" and an "L" in 3-ring targets. The smaller "H" came from Hopwood, Pa., the larger one is unidentified; the "G" is from Georgetown Sta., Washington D.C., and the last "L" (fig. 44/4) is from Washington, D.C. on a 2¢ vermilion.

I have followed the examples given by the late Mr. Burr, so I shall also begin with the 4-ring targets: the first is another "H" (71) on a 2¢ green from Colfax, Dak. It is of a violet shade. The diameter of the target is 2 mm. smaller but the "H" is 1 mm. higher than this Hopwood cancel. Next comes an "S" in a target of approximately the same size (72) as the previous one. It is of purple shade on the same 2¢ and is unknown as to origin. The next is a "C" on a 3¢ green (73). This cancel is black, and is the "D" which I have on a 2¢. Both are unidentified as to origin. The last 4-ring cancel has a very fancy "W" of purple shade on a 182, as well as on a 210 from Waseca. Unfortunately I cannot read the name of the State.

76 has a "C" in a 3-ring target. It is on a 3¢ green in black, and is unidentified. The target is the same size as the "G" cancel from Georgetown, but the "C" is much smaller than the "G". 77 has a large "H" in a 3-ring target too. It is black on a 2¢ vermilion, and comes from Philadelphia, Pa. It is the only one I have ever found from this town. The next "H" (78) is blue on an early 3¢ green from Hanover, Wis. Note the heavy middle ring, which makes it fancy, but as I have found only this one I have added it in the 3-ring class.

We shall now approach the 2-ring targets. Unfortunately, all except one are of unknown origin. 79 is a very heavy "C" in black on a 210. The big "S" (80) is on a 2¢ green, also in black. The nice little "B" (81) is on an early 3¢ green from Mazo-Manic, Wis., and the last (82) is on a 2¢ brown. They are all black.

I have a complete alphabet in 1-ring targets, but I do not think they belong in this class. I shall illustrate and describe them only if readers of this article ask me expressly to do so.

Next time we shall begin with type C I.

We have given permission to Ronald E. F. Pegg (#347) as Editor of the Journal of the American Stamp Club of Great Britain to reprint articles from the NEWS. Dr. Otto Bacher (#356) is Hon. Expert Consultant of this Club.

When in Southern California  
Visit  
C. H. BERKSON

213 West 4th Street  
Los Angeles, Calif.

for

S T A M P S

C O V E R S

C O I N S

20 Years on 4th Street!

CONFEDERATE STATES  
ARE MY SPECIALTY  
MONTHLY LISTS--APPROVALS

A L E X U L L R I C H

ASDA

1443 PLEASANT LANE  
GLENVIEW, ILLINOIS

ASDA

I WILL PURCHASE OR SELL THRU AUCTION  
COVERS, CANCELLATIONS, POSTCARDS, ENTIRE  
Our large Stock is Available on Approval.

STAMP MART  
OTOKAR CERNY  
189 W. Madison, Chicago, Ill.

F L O R I D A C O V E R S

w a n t e d

Can use anything prior to about  
1900. Please submit priced to:

BRUCE W. BALL 1635 du Pont Bldg.  
#234 Miami 32, Fla.

PRESIDENT'S LETTER

The recent death of Warner Bates (#6), one of the Founders of USCC and Chairman of our Expertizing Committee since the beginning has made necessary the appointment of another to act in that capacity.

After considerable thought and with due regard for the excellent reputation enjoyed by that Committee under Mr. Bates' regime we have decided on Daniel A. Stone (#53) to take up that task. We believe him well qualified to carry on that work.

Any member who wishes an expert opinion as to the status of any stamp or cover may send it, with stamped and addressed return envelope to Daniel A. Stone, 310 Denver Theatre Bldg., Denver 2, Colo. for his opinion. The stamp or cover should be mounted on a separate sheet of paper with space left for the opinion to be written, just another service free to members of USCC.

May each & every one of you enjoy the very best of health and happiness through 1959.

Burleigh E. Jacobs, Pres.

O L D U. S. C O V E R S  
A R E M Y S P E C I A L T Y

particular attention given to U. S. C. C. members special needs in old U.S. covers, approvals gladly submitted on request.

Write for my FREE special list of old US covers.

E. N. S A M P S O N

3 Robinson Drive Baldwinsville, N.Y.

NEW MEMBERS

- 468 Melvin W. Jackson, P.O. Box 5362, Terminal Sta., Denver 17, Colo-General  
469 C. S. Thompson Jr., 9070 SW 48th St., Miami 55, Fla.-Stampless Covers

RESTORED TO MEMBERSHIP

- 156 Gordon DeLisle, 3455 S. Stoner Ave., Mar Vista, Los Angeles 66, Calif.-Currently gathering a Master Postmark & Slogan Collection of all States & Territories of U.S., both 2"x4" & entire Covers & Fronts, with some Foreign. This follows a trail of 40 years in early U.S. 19th & 20th Century, Latin America well represented and some other foreign.

CHANGES OF ADDRESS

- 256 Gideon G. Ryder from 50 Madison St. to 255 Clifton St., Malden 48, Mass., c/o Malden Nurse's Club.  
407 Hugh M. Reid from Pocatello, Idaho to P.O. Box 2066, Alameda, Idaho.

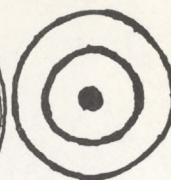
DECEASED

- 6 Warner Bates, Wardsboro, Vt.  
144 D. Peyton Bevans, New Canaan, Conn.

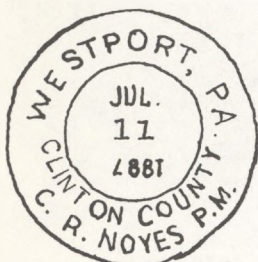
RESIGNED

- 367 Atwood A. Hyde  
425 P. D. Pittinger  
443 Gale B. Wells



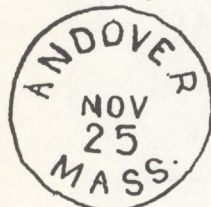


Post Masters Name



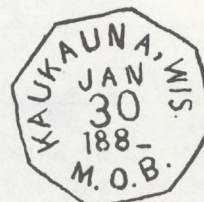
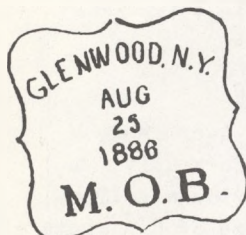
County and P.M. name

Town initial

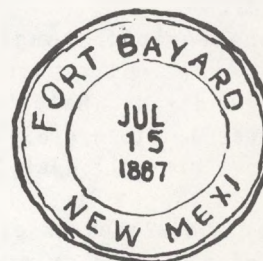


Also "20"

Forwarding mark

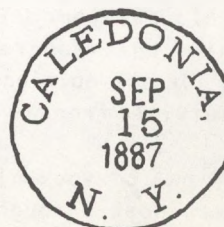
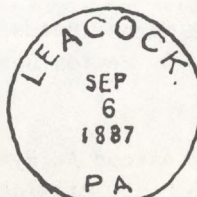
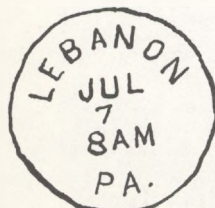


Money Order Business



Railroad Ticket cancel

Fort



Not a patent

FROM THE 2¢ BROWN COLLECTION OF MR. EDWARD L. WILLARD.





WORCHESTER, MASS.



PURPLE



PURPLE



PURPLE



PITTSBURG, PA.



BLUE  
CHICAGO, ILL.



TROY, N.Y.



BLUE  
PHILADELPHIA, PA.



WATERBURY, CONN.

GREENWICH VILLAGE, MASS.

HERST-ZARESKI

Members who can add to the information on the Herst-Zareski book which has been furnished by Mr. Hardman (#241) and published in the NEWS are urged to send in their additions for publication. The following list was sent in by Dr. deWasserman (#418) compiled from his own covers and stamps and those belonging to friends.

PAGE	ITEM	IDENTIFICATION
162	194	New Orleans, La.
164	210	Jersey Shore, Pa.
180	14	Brooklyn, N.Y.
184	46	Worcester, Mass.
	47	St. Louis, Mo.
186	67	West Eau Claire, Wis.
188	91	Leavenworth, Kans.
	99	Watkins, N.Y.
190	115	Lockport, N.Y.
	120	Osceola Mills, Pa.
206	99	Rock Island, Ill.
208	109	St. Louis, Mo.
212	154	Shelbourne Falls, Mass.
218	200	Lynchburg, Va.
222	234	Brattleboro, Vt.
224	265	Muncie, Ind.
228	296	Lansing, Mich.
	301	Lansing, Mich.
238	381	Osland, Ind.
240	403	New York, N.Y.
	404	Denmark, Me.
	408	Wilton, N.H.
	418	Bangor, Wisc.
246	457	Marshall, Mich.
250	505	Whitehall, N.Y.
270	2	Pine Bluff, Ark.
272	31	Worcester, Mass.
274	44	South Woodstock, Vt.
276	66	Beloit, Wis.
284	156	Rio Grande City, Tex.

1959 DUES

Although response to the dues bills sent with the November NEWS has been excellent, there still are a number whose dues for 1959 have not been paid. Those we urge to send in the \$3.00 promptly. Only those members whose 1959 dues are paid will be sent the March issue of the NEWS. Members who have built up a credit with the Sales Dept. may have dues charged against that account.

CORRECTION

On Page 40 of the Nov. NEWS, Identification of Cancellations in Herst-Zareski Catalogue, under Page 278 the item # should be 94 instead of 98.

PAID 3

Here is a marking used at Marlboro, Mass. on a Stampless Cover. This was sent in by Mr. James R. Littleton. Since he has never before seen this marking on a Stampless Cover he suspects it may be unusual and would welcome correspondence with any who may know about it.

TMPS SILVER ANNIVERSARY SHOW

Several Members of USCC took active part in this Convention and Exhibition. Arthur J. Rogers as Co-Chairman and also as an Exhibitor winning a Plaque for his "Postal History of Council Bluffs". Herman Herst Jr. conducted the Auction, arranged for the display of two inverts, the 24¢ Air and the 1¢ Pan American and gave an informal talk at the banquet on his experiences as a Dealer. Milton L. Greenebaum received a First Award and the APS Plaque for his "Michigan Territorial Covers". J. Stanley Thompson's "U. S. 1¢ 1861 Specialized" took a third in the Covers Class. Daniel A. Stone's "Selected Pages of Scandanavia" was awarded a third in the Foreign Section.

As reported in Nov. USCC Certificate went to Dr. Joseph Kunc1 Jr. of Alliance, Neb. for his display of Supplementary Mail Markings.

The Editor thanks Mr. Rogers for a set of the Cacheted Covers and a set of the Seals.

We wish to thank Ralph C. Huntington (#92) and Arthur B. Jackson (#263) for contributions toward the expense of putting out the NEWS.

Stephen M. Farndell (#371) was recently elected President of the Long Beach Stamp Collectors' Club Inc. and at the same time Mrs. Emily Moorefield (#342) was reelected Secretary for the eighth year. This is one of the oldest, largest and most active of the Clubs in the Southern California Federation. Meetings are very well attended.

Mrs. Moorefield is also President of the Long Beach Hobby Clubs Council. The annual Hobby Show sponsored by the council is large and interesting and scheduled for May 8-11 this year.



See Page 54 for illustrations

- |     |      |      |  |
|-----|------|------|--|
| 1.  | 1873 | #UX3 | Normal, Ill.   |
| 2.  | 1873 | #UX3 | La. C and St. Paul R. R.   |
| 3.  | 1873 | #UX3 | Milwaukee, Wis.  |
| 4.  | 1873 | #UX3 | Clermont, Iowa   |
| 5.  | 1886 | #UX9 | Calais, Me.  |
| 6.  | 1873 | #UX3 | St. Louis, Mo.   |
| 7.  | 1875 | #UX5 | Evanston, Ill.   |
| 8.  | 1875 | #UX5 | Springfield, Mass.   |
| 9.  | 1875 | #UX5 | Springfield, Mass.   |
| 10. | 1875 | #UX5 | Keen, N.H.   |
| 11. | 1875 | #UX5 | Malden, Mass.  |
| 12. | 1875 | #UX5 | Dover, N.H.  |
| 13. | 1875 | #UX5 | Bennington, Vt.  |
| 14. | 1875 | #UX5 | Hastings, Nebr.  |
| 15. | 1875 | #UX5 | Mt. Holly, N.J.  |
| 16. | 1875 | #UX9 | Centralia, Pa.   |
| 17. | 1861 | #65  | Washington, D. C.<br>(Back stamp)                                |
| 18. | 1861 | #162 | Thought to be<br>Acton, Mass.                                    |
| 19. | 1862 | #205 | San Francisco, Cal.  |
| 20. | 1875 | #UX5 | Reading, Mass.<br>Blue and black ink                             |
| 21. | 1875 | #UX5 | Bloomfield, N.J.   |
| 22. | 1861 | #65  | Unknown  |
| 23. | 1873 | #UX3 | Dayton, Ohio   |
| 24. | 1875 | #UX5 | Rochester, New York  |
| 25. | 1894 | #252 | Old Orchard, Me.   |
| 26. | 1885 | 2UX8 | Boston and Troy R.R.<br>Now part of the Boston<br>and Maine R.R. |
| 27. | 1875 | #UX5 | York, Pa.  |
| 28. | 1875 | #UX5 | Wheeling, W. Va.   |
| 29. | 1875 | #UX5 | St. Louis, Mo.   |

Ralph C. Huntington (#92) is Treasurer as well as Chaplain of George Washington Chapter #1 of the Masonic Stamp Club of New York.

#### THANKS FOR CARDS, COVERS & PLATE # SINGLES

Your Secretary wishes to thank all of you who so kindly remembered him with cards this Holiday Season and also all those who have sent special event covers. Also we wish to thank all members for the help sent along toward the collection of used plate # singles which your Sec'y is working on.

#### ROSTER

Usually we have included a roster with the January issue of the NEWS. This year it will accompany the March issue instead. We believe this will prove more satisfactory to all of us.

Perry Sapperstein (#349) needs just two dates to complete his calendar on the 3¢ 1861. He wants them in black only and on #65 only. The dates are Feb. 8 and Nov. 3. If you can supply either of these dates please drop him a card to 120 S. Marietta St., Gastonia, North Carolina.

#### FUNCTION OF THE H. P. O.

In 1941 the first Highway Post Office service was inaugurated between Washington, D.C., and Harrisonburg, Va. The demand for this service has been so great that there are now approximately 190 Highway Post Office routes operating in the United States.

Outwardly resembling an average bus, the sparkling red, white and blue Highway Post Offices present a far different picture within. Strictly functional, they are equipped with pigeon holed letter cases and steel racks, in which pouches and sacks are hung, much like any post office or Railway Post Office. Other than a narrow aisle in which clerks work, all available space is taken up with piles of mail sacks which are to be distributed en route. The interiors are designed especially for each run and to accommodate a large volume of mail. The purpose of Highway Post Offices is to provide facilities for the rapid, efficient distribution of letters, papers and parcels to and from every point on the globe. Clerks distribute the mail swiftly and steadily as the bus runs from town to town, making regular pick-ups and dispatches. On arrival at junction points or terminus of the run, the mail completely processed en route is ready for immediate transfer or dispatch to post offices, trains, trucks, airports or other Highway Post Offices.

First thought suitable only to replace branch line train service, Highway Post Offices are now being used on longer runs. The Highway Post Office was developed by the Post Office Department to fill the vacuum caused by steadily decreasing passenger train service on the Nation's railroads. This trend has reached the point where only 31 per cent of all post offices now have railway passenger service. An integral part of nearly all passenger trains has long been the Railway Post Office car which provided facilities for the distribution of mail en route and what has been termed the "backbone" of the Postal Transportation Service. The problem of retaining this essential function, without passenger trains, has been solved by Highway Post Offices.

For postal patrons and the Post Office Department, the Highway Post Office has numerous advantages. Owned and operated by private contractors for postal purposes only, the design, schedule and route of the Highway Post Office are under the sole control of postal authorities. This makes it possible to set schedules which insure receipt of mail from all possible connections and delivery to destination at the most advantageous hour.

In addition to flexibility of operation, economy also favors the Highway Post Office. Recent contracts for Highway Post Office service have been let for about two-thirds the cost of similar rail facilities. An additional economy, in most cases, is the ability of the Highway Post Office to exchange mail directly at the local post office, eliminating the cost of mail messengers to and from railroad stations.