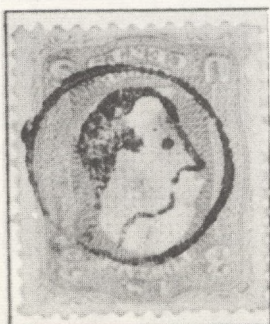
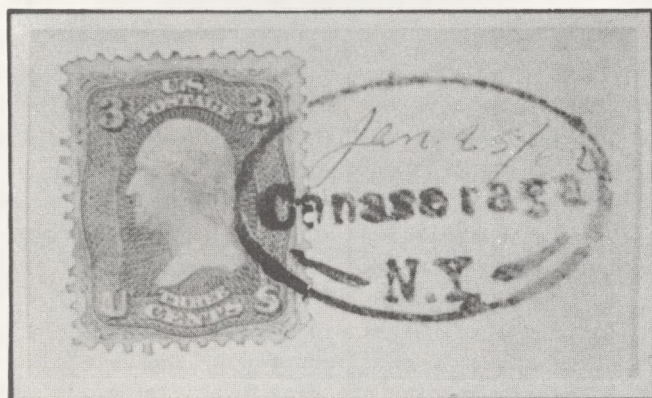




Cancellation Club NEWS

VOL. 5 - NO. 4 WHOLE NO. 47

JULY - 1960



Waterbury, Conn.

THE U S CANCELLATION CLUB NEWS

Published six times a year, January, March, May, July, September and November by the U S CANCELLATION CLUB and sent free to members.

Back Numbers 25¢ each to members

Subscription price to others: \$2.00 per yr.
35¢ per copy.

ADVERTISING RATES

Full page	\$15.00
Half Page	8.00
Quarter Page	4.50
Column inch	1.00
Adlets 2¢ per word, min.	50¢

Address communications to the Club Secretary
C. D. Root, 855 Cove Way, Denver 9, Colorado.

THE LEAVITT MACHINE CANCELLATIONS

By Frank B. Stratton (#487)

Illustrations on Page 35.

Although the Leavitt rapid canceling machines and their impressions have long been known and recognized by specialists, familiarity with them is still far from widespread, and much has yet to be learned about them. For a long time it has been believed that the Leavitt machines were the first ever to be used in any U.S. Post Office. Edwin Puls has recently shown that a machine invented by Goff and Hursy saw limited service at Pittsburgh, Pennsylvania, as early as 1871. However, Leavitt's machines still appear to be the first to have been in continued use anywhere, and to be first in the direct line of later successful developments.

Leavitt was active in the field for about eight years, from 1876 to 1884, but seems never to have developed a machine which could handle envelopes of varying size and thickness; all known impressions, with the few exceptions to be noted later, are on postal cards, a fact which has obviously worked against any wide acquaintance with them. Since much of Leavitt's work was done in the Boston Post Office on a somewhat informal basis, official record of the use of these earliest machines is scanty, but increasing knowledge of the cancellations themselves is gradually making it possible to piece together a fairly consistent picture of the period. So far, the available literature on the subject fails to give a complete story; the most detailed references cover only a portion of the field, while those which treat it more broadly are far from complete.

Fred G. Floyd ("The Machine Commats of Boston, Mass., 1876-1886", in Billig's Philatelic Handbook, vols. xii-xiii) is the most informative of the references shown to me; unfortunately he omits all but the barest mention of the many Leavitt machines used outside of Boston. "Boston Postal Markings to 1890", by M. C. Blake and W. W. Davis condenses most of this same basic information into tabular form and includes some additional facts and data. Paul Segnitz, in the S.P.A. Journal for

January, 1948, gives the most nearly complete listing I have seen of cities other than Boston which used the Leavitt machines, and reports several varieties not mentioned elsewhere. Other earlier references by Floyd, Olson, and Smith contain a certain amount of necessary information, but are in general too incomplete or inaccurate to be of much present value.

In this paper, then, I shall try to define the field, and describe it in enough detail to make its parts easily recognizable; to bring together and correlate all pertinent information from earlier sources, and add several pieces of information that I believe are new to the record; and to suggest possible explanations for some of the more puzzling aspects of the picture.

THE FIRST LEAVITT MACHINE---GROUP A CANCELLATIONS

The earliest phase of this history is fairly uncomplicated. A canceling machine, probably built much as described in Leavitt's second patent (U.S. Patent No. 192519), was installed in the Boston Post Office early in January, 1876. It was provided with a very distinctive postmark and killer (type A1, fig. 1) which was designed for use on all first-class mail, both letters and postal cards. However, it was quickly discovered that the machine could not handle envelopes of varying size and thickness; consequently a new killer die was introduced in the following month for use on postal cards exclusively (Type A2, fig. 2) and this or similar dies remained in use until April 1878. (Type A1 was used occasionally in February and March, 1876, and again in May, apparently in repeated attempts to adjust the machine to letter mail; after May, it drops out of sight completely, and all later types in Group A are known only on postal cards. Examples of Type A1, even on cards, are relatively rare.)

On January 1, 1878, a new killer (Type A3, fig. 3) appeared and was used concurrently with A2 until April, 1878, when the machine was replaced with a new model, and was retired from service. One card in my collection proves that both killers were used interchangeably on the same machine; it shows a normal impression of A3 on the face, and, directly opposite it on the reverse side, an offset of A2 from the pressure roll, which must have received an impression during the change-over. The two postmarks are in perfect registration with each other, and both show the same date and hour.

During this same period, one other similar machine must have been built and installed in a New York Post Office; type A2 impressions have been reported from both June and September, 1876. The straight-line postmark omits the state abbreviation, but is otherwise like the Boston postmark. A peculiar later appearance of this postmark will be described in a later section.

This completes the general outline of the first Leavitt period, but a few comments are in order.

Continued Col. 1, Page 34

WHEN IN SOUTHERN CALIFORNIA

Visit

C. H. BERKSON

213 West 4th Street
Los Angeles, Calif.

for

STAMPS

COVERS

COINS

20 YEARS ON 4th STREET!

CONFEDERATE STATES
ARE MY SPECIALTY
MONTHLY LISTS APPROVALS

ASDA ALEX ULLRICH
1443 PLEASANT LANE
GLENVIEW, ILLINOIS ASDA

I WILL PURCHASE OR SELL THRU AUCTION,
COVERS, CANCELLATIONS, POSTCARDS, ENTIRES

Our large Stock is available on Approval!

STAMP MART
189 W. Madison OTOKAR CERNY Chicago, Ill.

OLD U. S. COVERS
ARE MY SPECIALTY!

particular attention given to U. S. C. C.
members special needs in old U.S. covers,
approvals gladly submitted on request.

Write for my FREE special list of old U.S.
covers.

E. N. SAMPSON
3 Robinson Drive Baldwinsville, N. Y.

FLORIDA COVERS
wanted
Can use anything prior to about
1900. Please submit priced to:
BRUCE W. BALL 1635 du Pont Bldg.
#234 Miami 32, Fla.

FILLING WANT LISTS IS MY SPECIALITY!
AN EXCEPTIONAL STOCK OF STAMPS AND COVERS
AVAILABLE FOR INSPECTION:

ADVERTISING, PATRIOTICS, CANCELS, ETC.

R. H. MILLER
33 Drexel St Croton-on-Hudson, N.Y.

WANTED
Socked-on-the-Nose machine town
cancellations on regular U.S.
issues. Especially interested
in dates from 1900 to 1930.

Please send with your price.

ALLAN D. PARSONS
75 E. WACKER DRIVE, CHICAGO 1, ILL.

KANSAS TERRITORIAL COVERS
wanted
I NEED THEM FOR MY COLLECTION.
SO I AM ABLE TO PAY THE BEST
PRICES. SEND ME WHAT YOU HAVE.

HAL N. OTTAWAY 702 So. Hillside
Wichita 11, Kans.

WANTED
KENTUCKY STAMPLESS COVERS
NEED FOR COLLECTION * YOUR PRICE OR MY PRICE
Charles R. Kihnley 109 W. Whitney Ave.
#269 Louisville 14, Ky.

DECEASED

105 James E. Minor

RESIGNED

479 Harry S. Taber

MORE ON PROVIDENCE

James W. Milgram (#485) reports that he has PC268
shown on Page 19 on cover with 3¢ #65 tied which
shows the complete date, Dec. 16, 1865 used in
conjunction with "NOT CALLED FOR" both in red.

NEW MEMBERS

- 499 William C. Walker, 706 W. Locust St., Clear-
field, Pa.-U.S.#1-218 Fancy, Colored Foreign
Markings etc. (Tinsley)
500 James H. Wilson, Solon, Iowa- Fancy Cancels
on #210 on & off Cover, Iowa Postal History
Covers. (Root)
501 Harold Richow, 1653 Boyd Ave., Racine, Wis.-
Wisconsin Covers, Postal Cards, 3¢ 61 on
cover. (Van Vlissingen)

MEMBERSHIP REVIVED

- 325 W. E. Ethier, 990 SW 63rd Ave., Miami 44, Fla.

ADDRESS CHANGE

- 260 Robert P. Womack from 154 Orchard Place to
149 E. Crescent Ave., Ramsey, N.J.

APOLOGIES TO

- 356 Dr. Otto Bacher, c/o Westminster Stamp Co.,
Ltd., Regency House 1-4 Warwick St., London
W-1, England- Dealer.
Our apologies for omitting this name from
the alphabetical list of the Roster.

Leavitt Machine Cancellations. Cont.

Floyd has mentioned the unique aspect of the A1 killer; he has noticed that the cross-cut circles become progressively less distinct in later impressions, and that in one late example one of the crosses shows a distinct angular rotation, but he offers no explanation. The first Leavitt patent (U.S. Patent no. 175290) shows as a killer device a staggered row of plugs "made of rubber, cork, or other elastic material" and set into holes bored in the printing cylinder. It seems to me quite likely that the first actual machine was originally provided with two such plugs, made of cork and incised with crosses similar to those so often used on hand-cancelling devices of the period. (Consider the whipsockets on the first automobiles!) Then, before the machine was actually used, these plugs were reinforced with a strip of metal, cut with the diagonal design, and having two holes for the insertion of the corks with their outer faces flush with the metal surface. By the time that A2 was introduced, it would have been seen that the corks were unnecessary. I offer this as a possible explanation; at least, it accounts for the observed peculiarities, and seems reasonable.

I believe; too, that the A2 dies were made by cutting in half the blanks that had been prepared for the A1 die. The A1 impressions are 48 mm. long; the normal length of A2 is 23 mm. If, however, the cutting was done carelessly, all the known variations of type A2 are accounted for automatically. Most of the A2 impressions show 9 diagonal bars, counting the small diagonal corner sections, but even these are sometimes only 22mm. wide. (Fig. 4.) At least one die was so narrow that only 8 bars are shown (Fig. 5.) and I have seen one example with 10 clear bars. Even impressions of normal width show slight variations of the arrangement of the bars within the rectangular space.

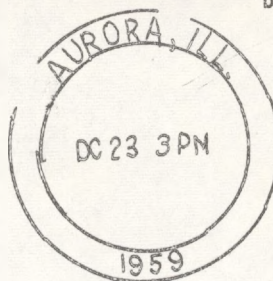
Perfect impressions of the A2 killer are not common; inking was usually light and incomplete, which has given rise to earlier reports of varieties which are probably only inking faults. (Fig. 6.) The above observations, however, are based on examples clear enough to be beyond question. I have not yet acquired enough copies to attempt any sort of chronological listing of all the A2 dies used during this period.

Floyd also comments on the extreme variability of the spacing between the different elements of the postmark. I believe this can be explained easily as a result of the setting up by hand of a number of movable slugs. The first two lines (BOSTON/MASS.) were cast as one slug; the third line (month, day, year) was made up of three slugs, and the fourth (hour) of two. If these were set up with blank spacers between the lines to make a stack of the proper height to fill the allotted space, then the arbitrary arrangement of the vertical spacers, and the possibility of the lateral shifting of the printing slugs, could easily account for every observed variation in the postmark as a whole.

EDITOR'S NOTE: This is the first of a short series on the same subject. The next will appear in an early issue.

20th CENTURY CANCELS ARE FUN!

by Bob Pritchard



Now more interested than ever in his colorful, individualistic, twentieth-century cancellation collection our collector has found them every bit as authentic and certainly as interesting as the 19th century cancels even if a great more numerous.

The next logical cancellation, logical to this collector because he kept finding them when looking for targets, etc., were the large "Single Line Handstamps" and "Double Line Handstamps" which appear on stamps both in black and in colored ink. The colored handstamps are very attractive and present a striking display when seen. Most black "Single Line" and "Double Line" and even color "Single Line" canceled stamps can be purchased for an used stamp's price but many times a dealer will place a premium price on a well-centered, color "Double Line" as it ranks as a favorite cancel just as the "Color Target" and the "On the Nose" cancels. A city name, date and state will always appear on these cancels and as it is impossible to get the entire, large cancel on the single stamp the collector will always try to get these types of cancels on blocks so that they can preserve the entire cancel as perfection is impossible to be obtained on the single stamp.

Ed Carter, our genial official of the Aurora Post Office, who served as our informant regarding many cancel inquiries states that this cancel is used on First Class Mailings on the long envelopes and on smaller envelopes which are too bulky to be run through the cancel machine. He states that the "Single Line" is the older type and now almost obsolete, packed away in the cellars of most postoffices, and all are now supposed to use the "Double Line".

Your writer enjoys and covets these enjoyable, most welcome cancels to his collection and needs the 13¢, 16¢, 17¢, 18¢, 19¢, 21¢, 22¢, 13¢, 15¢, \$2 and \$5 large "Single Line Handstamps" black in his album and the 14¢, 16¢, 18¢, 22¢, 13¢, #1, \$2 and \$5 black "Double Lines". Of the "Double Line Color" he wants the 14¢, 30¢ and of the "Single Line Color" the 1¢, 1¢, 2¢, 3¢, 4¢, 4½¢, 5¢, 7¢, 8¢, 9¢, 10¢, 11¢, 12¢, 13¢, 14¢, 15¢, 16¢, 18¢, 20¢, 22¢, 24¢, 25¢, 50¢, \$1, \$2 and \$5. All these cancels should be on the 1938 Presidential Series denominations and the cancels should show a readable city name and as much else as can be included on the single stamp.

Therefore the addition of the "Single and Double Line" handstamps is not only a logical but a very important and colorful addition to a 20th Century cancellation collector's collection. The rewards of satisfaction and pleasure in completing the sets of same more than compensate the philatelist's search for them.

LEAVITT MACHINE CANCELLATIONS - GROUP A

BOSTON
MASS.
JAN. 7.76
3 P.M.



Type A1

Fig. 1

BOSTON
MASS.
MAR. 13.76
4 P.M.



Type A2
Normal - 9///, 23 mm.

Fig. 2

BOSTON
MASS.
JAN. 7.78
1.30 P.M.



Type A3

Fig. 3

BO JN
MASS.
JUNE 9.77
8 P.M.



Type A2
Narrow - 9///, 22 mm.

Fig. 4

BOSTON
MASS.
DEC 29.77
2.30 P.M.

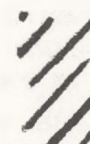


Type A2
Very narrow - 8///, 19 mm.

Fig. 5



(a)



(b)

Type A2
Incomplete Inking

Fig. 6

TABLE: GROUP A

Type	City	Postmark	Killer	Earliest	Latest
A1	Boston	4 str. lines	14///, 24	Jan. 6, 1876	May 15, 1876
A2	Boston	4 " "	9///	Feb. 11, 1876	Apr. 11, 1878
	New York	3 " "	9///	June, 1876	Sept., 1876
A3	Boston	4 " "	C in circle	Jan. 1, 1878	Apr. 3, 1878

SEE PAGE 32 "THE LEAVITT MACHINE CANCELLATIONS."

POSTAL SLOGAN CANCEL & METER SOCIETY

ITS AIMS ARE: To classify, illustrate and describe all Postal Slogan Cancels and Meters used during the 20th Century; to do research work in determining time and place of usage of the different cancellations and meters, when first used and, if no longer used, when discontinued, kinds of mail cancelled, etc.; to stimulate interest in this type of collecting and to help collectors to determine what to look for and collect, how to classify, mount, etc. Collecting may be of cancels on cover, on card, on 2 x 4 cuts, on the stamps (socked on nose). Meters may be collected on covers, tapes or strips 2 by length of envelope; to publicize the various Slogan cancellations in SLOGAN SLANTS and the meters in THE METER COLLECTOR; to promote this type of philately generally and provide a means for future collectors to learn the story of these cancellations and meters while such information is still available. Subscription price for both publications is \$2.50 per year in USA and \$3.50 in other countries.

SLOGAN SLANTS will contain full information on:

NEW SLOGANS AS ANNOUNCED

UNANNOUNCED SLOGANS to watch for

SLOGANS IN USE AND/OR USED

ADDITIONAL INFORMATION in CATALOG, SUPPLEMENTS

Details about SLOGAN SERVICE participation

THE METER COLLECTOR will contain:

FEATURE ARTICLES containing data, lists, etc.

BARFOOT-SIMON Catalog Supplements

DETAILS ON HOW, WHAT & WHY OF METER COLLECTING

For information write: Moe Luff, 12 Greene Road, Spring Valley, N.Y.

Thanks to Mr. Luff, USCC has quite a file of SLOGAN SLANTS which is available to members in the same manner as items in the Library. Also we have a few copies of THE METER COLLECTOR.

MASONIC CANCELLATIONS QUINCY, MASS.

Dr. S. Duffield Swan, formerly a member and at one time President of USCC, writing for the MASONIC PHILATELIST has illustrated these five Masonic Cancellations four of which he found on a series of letters from Mr. C. B. Travis of Quincy, Mass. to Miss Julia P. Cole.



Dates of usage were as follows:

Type 1, Mar. 8 & Aug. 31, 1867

Type 1a, June 26 & July 14, 1867

Type 2, March 28, April 10, May 14, 1867

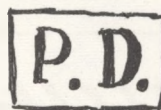
Type 2a, nine different dates between Feb. 2 & July 17, 1867

Type 2b, Oct. 6, 1867 & many other dates. This is the commonest Masonic from Quincy.

The Postmaster during this period was John B. Bass.

IS THIS AN ENGLISH MARKING?

Paul R. Mines (#398)



The cover on which these marks appear is franked by a #60 violet and 2 #65 bright rose, all cancelled with a red grid. It is addressed to A. G. Goodall Esq., care U.S. Legation, Paris, France. Paris, France has been crossed out and Londre added. The postal Markings on the front all are in red.

1. a large circular New York 12, date illegible
2. a circular Calais with octagon center encloses date Dec. 8, 61

3. Large P.D. in Rectangle (see above)

4. More to Pay in circle (see above)

Postal markings on the back cover are:

1. Black Paris double circle Dec. 8, 61

2. Red Paris double circle Dec. 9, 61

3. Red London in circle Dec. 10, 61.

4. Small black circle with 1/2.

The colors of the markings "More to Pay" and the London Back Stamp are a darker red than the others and similar in shade. If any of you know of this "More to Pay" marking and know its origin will you please write the editor or Mr. Mines at Wayne, Neb.?

FRONT PAGE

On the front cover we reproduce another page from the prize winning collection of cancellations on the 3¢ 1861 formerly owned by Burleigh Jacobs (#16).

1st INTERNATIONAL PHILATELIC CONGRESS

As noted in the March issue of the NEWS we submitted a copy of the NEWS for display at the 1st International Philatelic Congress. We have been notified that it was awarded a "Diploma" which we suppose would correspond to "Honorable Mention" in a local show.

Edward L. Willard (#125) received a Bronze Medal for his exhibit in the "Overseas" section.

Jonathan Wolfe (#421) received an award at the Roosevelt Philatelic Society Exhibit recently held at Chicago for his "20th Century Commemoratives".

Award winners at the 10th Annual Convention and Exhibition of the Federation of Iowa Stamp Clubs included Arthur J. Rogers (#438) and Dr. Caroline O. Merriam (#495). We noted in the May issue the award of the USCC Certificate to Mr. James Wilson (#500).

Thanks to several of our Michigan members we have received a number of issues of the PENINSULAR PHILATELIST.

IMPORTANT NOTICE

The USCC will hold an exhibition in Wichita, Kansas, October 13-14-15, 1961, under the sponsorship of the Wichita Stamp Club.

Approximately 300, six page frames will be available to USCC members and even though the exhibit is more than one year in the future, it is important that the approximate frame requirements be known within the next 60 days.

The show will be open to all USCC members for the display of 19th and 20th Century cancellations, territorials, packet boats, etc. Plans are being discussed for appropriate awards and your exhibition committee promises that these will be something entirely different than the usual trophy.

The frame charge will be \$2.00 for each six page frame and tentative plans call for a limit of 8 frames (48 pages) for each exhibit and one exhibit to a member.

It is hoped that by limiting the size of each exhibit, more members will be encouraged to exhibit, thus assuring a well diversified exhibition of choice material.

Because of the limitation of approximately 300 frames for the entire show, you are requested to make tentative reservations for frames so that it may be determined if the limit of 8 frames per member will accommodate all who wish to exhibit. Please direct your correspondence to:

Lee H. Cornell,
606 Orpheum Bldg.,
Wichita 2, Kansas

Remember, the show will be October 13-14-15, 1961 at the Hotel Lassen, Wichita, Kansas, during the Kansas Centennial Year.

Several conventions are scheduled in Wichita during October, 1961 and hotel rooms will probably be scarce. If you plan to attend the show, it is suggested that you make room reservations WELL in advance of the show dates. Reservations may be made directly with the Hotel Lassen through the writer at the above address.

CORRECTION

On Page 26 of the May issue beginning on the 11th line of the text correct the wording as follows: "When Indian Territory became the State of Oklahoma (Nov. 16, 1907) only eight Post Offices had used the Machine Cancel of the Flag Variety."

FOR SALE

THREE CENT GREEN 1870-82
PLATE, PRINTING & PAPER VARIETIES

A very large, comprehensive collection of the stamp which ranks with the 3¢ 1852-57 as the most prolific U.S. 19th Century value.

It contains proof that most everything that could happen to a stamp in the making exists on this one, varieties of all three abound in it.

Among these are such good items as CRACKED, SCRATCHED & GASHED PLATES, TAMPAN OFFSETS, i.e. print on both sides, DOUBLE & PELURE PAPERS, to mention a few.

One of the many DOUBLE TRANSFERS is the most complete example known on a U.S. stamp, almost a double print.

PLATE VARIETIES drawn and mounted in duplicate on small photos are clearly visible.

The COLLECTION is mounted on thirty-three 8½ x 11 album sheets forming a very effective display, an award winner when exhibited in the past during the 30 years of its formation.

Price will be very reasonable to a present or prospective student of this stamp.

For more information please address "P.P.P.", care of C. D. Root, Sec'y, U S CANCELLATION CLUB, 855 Cove Way, Denver 9, Colo.

LIBRARY

Item #1 in our Library, the two volumes of CANCELLATION articles taken from STAMPS magazine by your Sec'y many years ago had become so worn with travel that we were glad to accept the offer of Mr. Abe Boyarsky (#478) to make it into one volume by eliminating all parts which do not apply to cancellations and rearranging the pertinent material in scrap book form.

This job is practically done and we believe is complete except for illustrations of single letter Cancellations to which STAMPS assigned number XXIX-W 50,51,52,53,54. If any member is able to supply these illustrations please get in touch with Mr. Boyarsky, 14620 Los Fuentes Road, La Mirada, Calif. He will make copies and return the originals.

In behalf of the members of USCC, your Sec'y wishes to thank Mr. Boyarsky for this valuable contribution to our Club.

Also we wish to thank Burleigh Jacobs (#16) for a copy of E. N. Sampson's catalogue of Wisconsin Stampless Covers. This is priced and copy-righted in 1950.

Both of these items may be borrowed by members in the usual manner. Shipping weight of the Sampson Catalogue 5 ounces, probable shipping weight of the new cancellation articles about 7 pounds.

INDIAN TERRITORY KILLERS 1868-1907

by GASPARE SIGNORELLI

Illustrations on Pages 27-30, May Issue

Continued from May:

Post Office as it Appears in Postmark	Type Killer	Color	Year Date
<u>CHOCTAW NATION, Cont.</u>			
NEW BOGGY DEPOT, IND. T.	K-1	Black	1878
OAK LODGE, INC. T.	"	"	1893
RED OAK, IND. TY.	K-37	"	1870
SANS BOIS, IND. TER.	K-21	Purple	1894
SHADY POINT, IND. T.	K-12	Black	1900
SIMPSON, IND. T.	K-2	"	1898
SOUTH McALESTER, Ind. Ty.	K-43	"	1892
MOB			
SOUTH McALESTER, IND. T.	K-32	"	1898
SOUTH McALESTER, IND. T.	K-27	"	1907
STRINGTOWN, IND. TER.	K-2	"	1881
STRINGTOWN, IND. T.	K-1	"	1896
TALIHINA, IND. T.	K-4	"	1896
TAMAHIA, IND. T.	K-1	"	1894
TUSKAHOMA, IND. T.	K-1	"	1897
UTICA, IND. T.	K-1	"	1898
WHELOCK, IND. TER.	K-7	Blk or magenta	83
WILBURTON, IND. T.	K-1	Black	1894

CHICKASAW NATION

ARDMORE, IND. T.	K-27	Black	1907
ARDMORE, IND. T.	K-51	"	1891
ARDMORE, IND. T.	K-46	"	1895
BROCK, IND. T.	K-1	"	1891
BROWNSVILLE, IND. T.	K-1	"	1897
BUCKHORN, IND. T.	K-1	"	1891
CHICKASHA, IND. T.	K-27	"	1907
CENTER, IND. T.	K-1	"	1897
CHEROKEE TOWN, IND. T.	K-39	"	1877
CONNERSVILLE, IND. T.	K-1	"	1897
CUMBERLAND, IND. T.	K-1	"	1900
DURWOOD, IND. T.	K-1	"	1895
DURWOOD, IND. T.	K-48	"	1900
FLEETWOOD, OKLA.	K-1	"	1896

(Although located in the Indian Territory,

The postmaster at this office applied
"OKLA" postmarks during 1896)

ELK, IND. T.	K-2	Black	1897
FORT ARBUCKLE, IND. T.	K-30	"	1896
FOSTER, IND. T.	K-1	"	1897
GRADY, IND. T.	K-1	"	1892
JOHNSON, IND. T.	K-1	"	1897
LOCO, IND. T.	K-1	"	1897
McGEE, IND. T.	K-1	"	1897
MARIETTA, IND. T.	K-1	"	1894
MARLOW, IND. T.	K-17	"	1893
MARLOW, IND. T.	K-12	"	1900
MARDSEN, IND. T.	K-1	"	1897
MILLCREEK, IND. T.	K-1	"	1900
NEBO, IND. T.	K-1	"	1898
NIDA, IND. T.	K-1	"	1898
PONTOTOC, IND. T.	K-1	"	1899
ROCKY POINT, CHICK. NAT.			
INDIAN TER.	K-41	"	1880
RUSH SPRINGS, IND. T.	K-1	"	1894
RUSSET, IND. T.	K-2	"	1897
SANDY, IND. T.	K-1	"	1898
SILCO, IND. T.	K-1	"	1898
SILVER CITY, IND. TER.	K-31	"	1886
STONEWALL, IND. TER.	K-1	Magenta	1891
THACKERVILLE, IND. T.	K-1	Black	1889
TISHOMINGO, IND. T.	K-35	"	1897
VELMA, IND. T.	K-2	"	1892
WAPANUCKA, IND. TER.	K-23	"	1885
WASHITA, IND. T.	K-1	"	1891
WAYNE, IND. T.	K-1	"	1897
WEAVERTON, IND. T.	K-12	"	1898
WHITE BEED HILL, IND. TER.	K-17	Blue	1884
WHITE BEED HILL, IND. T.	K-26	Violet	1887
WILLIS, IND. T.	K-1	Black	1897
WILSON, IND. T.	K-1	"	1894
WOMACK, IND. T.	K-1	"	1893
WOODFORD, IND. T.	K-1	"	1897
WYNNEWOOD, IND. T.	K-5	"	1899

Post Office as it Appears in Postmark	Type Killer	Color	Year Date
<u>CREEK NATION</u>			
BACONE, IND. T.	K-2	Black	1890
BACONE, IND. T.	K-28 (2)	"	1906
BOYNTON, IND. T.	K-28 (3)	"	1905
COUNCIL HILL, IND. T.	K-58 (1)	"	1906
CREEK AGENCY, IND. TY.	K-1	"	1870
EUFULA, IND. T.	K-18	"	1878
EUFULA, IND. TER.	K-36	"	1894
FISHERTOWN, IND. T.	K-1	Blue	1886
GIBSON STATION, C. N.	K-24	Black	1878
GIBSON STATION, IND. TER.	K-3	"	1886
GIBSON STATION, IND. T.	Fancy Wheel	Blue	1891
HENRYETTA, IND. T.	K-1	Black	1900
HOLDENVILLE, IND. T.	K-4	"	1898
MOUNDS, IND. T.	K-1	"	1899
MUSCOGEE, IND. TER.	K-8	Bluish blk	1885
(The spelling of this P.O. name was changed after 1900 from MUSCOGEE to MUSKOGEE)			
MUSKOGEE, IND. T.	K-27	Black	1905
MUSKOGEE, IND. T.	K-33 (1)	"	1900
MUSKOGEE, IND. T/OR TERR	K-34	"	1907
OKMULGEE, IND. TER.	K-8 (11 bars)	Purple	1887
OKMULGEE, IND. T.	K-1	Purple	1880
TULSA, IND. TER.	Fancy Wheel	Magenta	1883
TULSA, IND. T.	K-27	Black	1897
WAGONER, IND. T.	K-4	"	1897
WETUMKA, I. T.	K-1	"	1886
WETUMKA, IND. TER.	K-12	Magenta	1894
WETUMKA, IND. TER.	K-36	Brown	1894

CHEROKEE OUTLET

CAMP SUPPLY, IND. TER	K-15	Blue	1876
CAMP SUPPLY, IND. TER.	K-1	"	1878
CAMP SUPPLY, IN. T.	K-14	Black	1880
FORT SUPPLY, IND. T.	K-14	"	1890

CHEYENNE & ARAPAHO RESERVATION

CANTONMENT, IND. T.	K-2	Black	1880
DARLINGTON, IND. TY.	K-13 (no numeral)	"	1885
DARLINGTON, IND. TER.	K-33	Magenta	1886
FORT RENO, IND. TY.	K-13 (9)	Black	1883
FORT RENO, IND. T.	K-5	"	188 ?

GREER COUNTY

WILLOWVALE, IND. T.	K-1	Black	1893
---------------------	-----	-------	------

KANSAS (KAW) RESERVATION

KAW AGENCY, INDIAN TER- RITORY	Fancy Wheel	Black	1883
-----------------------------------	-------------	-------	------

NEUTRAL STRIP

ELMWOOD, IND. T.	K-2	Black	1889
------------------	-----	-------	------

KIOWA-COMANCHE & APACHE RESERVATION

ANADARKO, IND. TER.	K-19	Blue	1885
ANADARKO, I. T.	K-20	Violet	1879
FORT SILL, IN. TER.	K-2	Black	1870
FORT SILL, IND. TER.	K-11	"	1882
FORT SILL, IND. TERR.	K-11	"	1884
FORT SILL, IND. T.	K-1	"	1887
FORT SILL, IND. TERR.	K-9	"	1887

OSAGE NATION

GRAY HORSE, IND. T.	K-1	Black	1890
PAWHUSKA, IND. T.	K-21	"	1890
PAWHUSKA, IND. T.	K-1	"	1892

OTTAWA NATION

MIAMI, IND. T.	K-12	Black	1900
----------------	------	-------	------

PONCA NATION

PONCA, IND. TER.	K-17	Magenta or black	1889
------------------	------	---------------------	------

POTTAWATOMIE NATION

SACRED HEART MISSION, IND. TER.	K-11	Black	1887
SACRED HEART, IND. TER.	K-2	"	1890

SAC & FOX RESERVATION

SAC & FOX AGENCY, IND. T.	K-8 (11 bars)	Blue	1883
SAC & FOX AGENCY, IND. TER.	K-8 (11 bars)	Blue	1883

m o r e . . .