



Cancellation Club NEWS

VOL. 5 - NO. 7 - WHOLE NO. 50

JANUARY - 1961

STAMPLESS COVERS

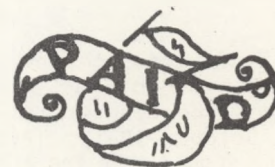
SOME MORE INTERESTING AND UNUSUAL POSTMARKS



blue FREE in circle
HILLSDALE, Mich.
1838
Eaton stock



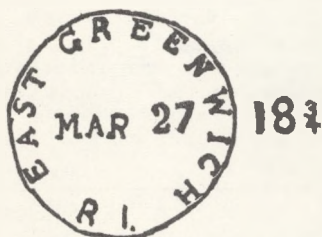
Appeared in black
Courtesy Mr. Blinn



Appears in red
date?
WORCESTER, Mass.
Courtesy Globe Stamp Co.



black
SAVANNAH, O.
1852
Eaton stock



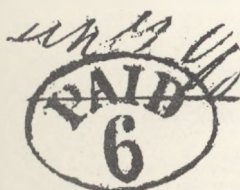
black
1835
Courtesy Mr. Whittemore



red
date?
NEW YORK MILLS, N. Y.
Eaton stock



blue
date?
SYRACUSE, N. Y.
Eaton stock



blue; Pa. town.
data lost in mail
France to U. S. this
summer. Ed.
Harrisburg?



red, 1851
Eaton stock

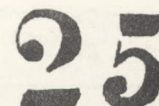
THE THREE MARKS BELOW used with the APALACHICOLA, Florida Territory seen at the left. From Eaton stock and Dr. Lord.



1851, red



1847, red



1844, red

SEE PAGE 56"

THE U S CANCELLATION CLUB NEWS

Published six times a year, January, March, May, July, September and November, by the U S CANCELLATION CLUB and sent free to members.

Back Numbers 25¢ each to members.

Subscription price to others: \$2.00 per yr.
35¢ per copy.

ADVERTISING RATES

Full page.....	\$15.00
Half Page.....	8.00
Quarter Page.....	4.50
Column inch.....	1.00
Adlets 2¢ per word, min.	50¢

Address communications to the Club Secretary
C.D. Root, 855 Cove Way, Denver 9, Colorado.

FRONT PAGE

On the front page of this issue we reproduce some illustrations from STAMPLESS COVERS for November, 1928. Members interested in stampless covers are urged to use the Club's sales department. We always have a number of books of them both USA and Foreign.

PIKE CHARTS

On page 58 we show the Pike Charts as printed in the Olson Handbook #1.

WICHITA

As announced on page 37 of the July NEWS, USCC will hold an exhibition in Wichita, Kansas under the sponsorship of the Wichita Stamp Club on October 13-15, 1961. Members wishing to attend should make their hotel reservations as early as possible since 1961 is Kansas' Centennial Year and a number of conventions are being held in Wichita.

Also, although it seems a long way into the future, members wishing to exhibit should make tentative reservations for frames. Plans now call for a limit of eight 6 page frames for each exhibitor. Possibly this limit may be changed later. Frames will be \$2.00 each. Several members have already made their tentative reservations but we know others are interested.

For hotel or for frame reservations please write Lee H. Cornell, 604 Orpheum Bldg., Wichita 2, Kans.

Also, in order to do our part toward awards, etc. USCC needs to raise some extra money. Members wishing to do so may make donations. To receive these donations we are setting up a separate account. Just send to your Secretary with instructions. Also the Club can supply autographed copies of Lee Cornell's TALE OF THE KICKING MULE at \$2.00 each. Mr. Cornell is donating the books to the Club for this purpose so the entire \$2.00 for each one will be available. Send orders to your Secretary, C. D. Root, 855 Cove Way, Denver 9, Colo. We shall try to report on progress in subsequent issues of the NEWS.

Many thanks to Jack Robert Hughes and to Ralph C. Huntington for gifts toward the expense of the NEWS.

PATRONIZE THE
ADVERTIZERS IN THE "NEWS".

SALES DEPARTMENT

Please use more care in checking your purchases. Many circuits returning to the sales manager show small errors in one or more reports. When the author of an error is easy to identify he will be notified by postal card. The cost of this is approximately 5¢ so we have been authorized to add 5¢ to the amount of the error. When the member making the error is impossible to determine our rules allow us to charge it to the last member of the list. This we have never yet done since the amounts have been small and our insurance fund has been able to absorb them. We hope that we will not have to use this rule.

Also some members impose on our good nature by holding circuits much longer than they should. This also adds to our expense since we have to send a card of inquiry on every circuit from which we have not had a recent report. Please be more prompt in forwarding circuits. Please be sure parcels are wrapped securely and that all unused report blanks and the CIRCUIT LETTER are enclosed.

Sometimes the circuit letter becomes lost. When this happens please DO NOT throw the whole mess into a box and return to the sales manager. Please DO write the sales manager telling him what you have and asking for instructions. The sales manager has already paid transportation on that circuit to the first member on the list and should not be expected to pay again to another member which he must do if it is returned to him before the last name is reached.

In preparing books of stamps or covers for the department please remember that our circuits are divided between the 19th & the 20th Centuries. Your material will travel all around much more quickly if material from the 19th Century is not included in books of 20th Century items. Some of our members limit their collecting activities to the 19th Century and some collect only 20th Century items. Since we try to give your material every chance to sell books containing material from both centuries have to go to more circuit groups.

We have foreign covers from many different countries, some old, some recent, many quite unusual. So far these have been sent out only on a "special selection" basis but, if a large enough number of you are interested we could very well make up regular circuit lists for them. Please notify the sales manager if interested. If we have what you want a selection will be sent promptly.

NEW MEMBERS

- 510 B. C. Oakley Jr., P.O. Box 382, Bruce, Miss.-- Miss. Covers (Stamped & Stampless), Memphis, Tenn. Covers (Stampless, Confederate, stamped prior to 1900), Packet Boat Covers from Memphis, Fancy Cancells on US stamps prior to 1900.
- 511J Ralph W. Harkison, 32 Walnut St., Aurora, Ill.-- U.S. Postal Cards, Illinois Postal History on Postal Cards.
- 512 H.H. McVeigh, West 310-312 First Ave., Spokane 4, Wash.-- USA with special reference to Revenues, Match and Medicines and 19th Century Postal Markings.
- 513 N. Leonard Persson, 9945 France Ave., TuJunga, Calif.--Alaska to 1920, Nevada and Colorado to 1899, Ariz. & New Mex. to 1890, Mont. & Wash. to 1899.
- 514 Dr. William Heard, 504 Park St., Grand Haven, Mich.--USA before 1890 inc. fancy and unusual Cancells. Canada and Newfoundland.

When In Southern California

Visit

C. H. BERKSON

213 West 4th Street
Los Angeles, Calif.

for

STAMPS

COVERS

COINS

20 YEARS ON 4th STREET

CONFEDERATE STATES
ARE MY SPECIALTY

MONTHLY LISTS

APPROVALS

ALEX ULLRICH
ASDA 1443 PLEASANT LANE
GLENVIEW, ILLINOIS ASDA

OLD U. S. COVERS

ARE MY SPECIALTY!

particular attention given to U. S. C. C.
members special needs in old U. S. covers,
Approvals gladly submitted on request.

Write for my FREE special list of old U.S.
covers.

E. N. SAMPSON

3 Robinson Drive Baldwinsville, N. Y.

CANCELLATIONS, COVERS,
TOPICAL SEALS (NON SCOTT)
TRAINS, SPORTS, SHIPS, RED CROSS,
CHARITIES, RELIGION, ROCKETS, ETC.

APPROVALS STAMPMART 189 W. Madison
A.S.D.A. OTOKAR CERNY Chicago 2, Ill.

FLORIDA COVERS

wanted -

Can use anything prior to about
1900. Please submit priced to:

BRUCE W. BALL 1635 duPont Bldg.
#234 Miami 32, Fla.

FILLING WANT LISTS IS MY SPECIALTY
AN EXCEPTIONAL STOCK OF STAMPS AND COVERS
AVAILABLE FOR INSPECTION:

ADVERTISING, PATRIOTICS, CANCELS, ETC.

R. H. MILLER
239 Lynwood Drive Pittsburgh 35, Pa.

U. S. FANCY CANCELLATIONS

of the 20th Century

especially 1927-1932 type.

Correspondence is invited from collectors interested in these strange (some rare)
cancellations. I have a relatively large quantity, both registered and first class on
cover.

For identification purposes I suggest the use of Loso-DeWindt catalog numbers.
Perhaps I may have some of these items, as well as other 20th Century cancellations,
in which you may be interested.

EDMUND FAIRCHILD, #259

111 HACIENDA DRIVE

ARCADIA, CALIFORNIA

WANTED ON APPROVAL

Cancellations on and off cover; Stampless,
except common eastern; Illustrated Adver-
tising Covers; Government Postal Cards with
illustrations or unusual cancellations;
Civil War Material.

JOHN W. STINE

821 Kingshighway Edwardsville, Ill.

WANTED

KENTUCKY STAMPLESS COVERS

NEED FOR COLLECTION - YOUR PRICE OR MY PRICE.

Charles R. Kihnley 109 W. Whitney Ave.
#269 Louisville 14, Ky.

The 3¢-1861

Wanted by Collector

Cancellations on and off cover.

A. Boyarsky -- #478
14620 Los Fuentes Rd.
La Mirada, California

CHANGE OF ADDRESS

173 Rev. Frederick E. Smythe from Valley City,
N.D. to 1602 Monte Drive, Mandan, N. Dak.

DECEASED

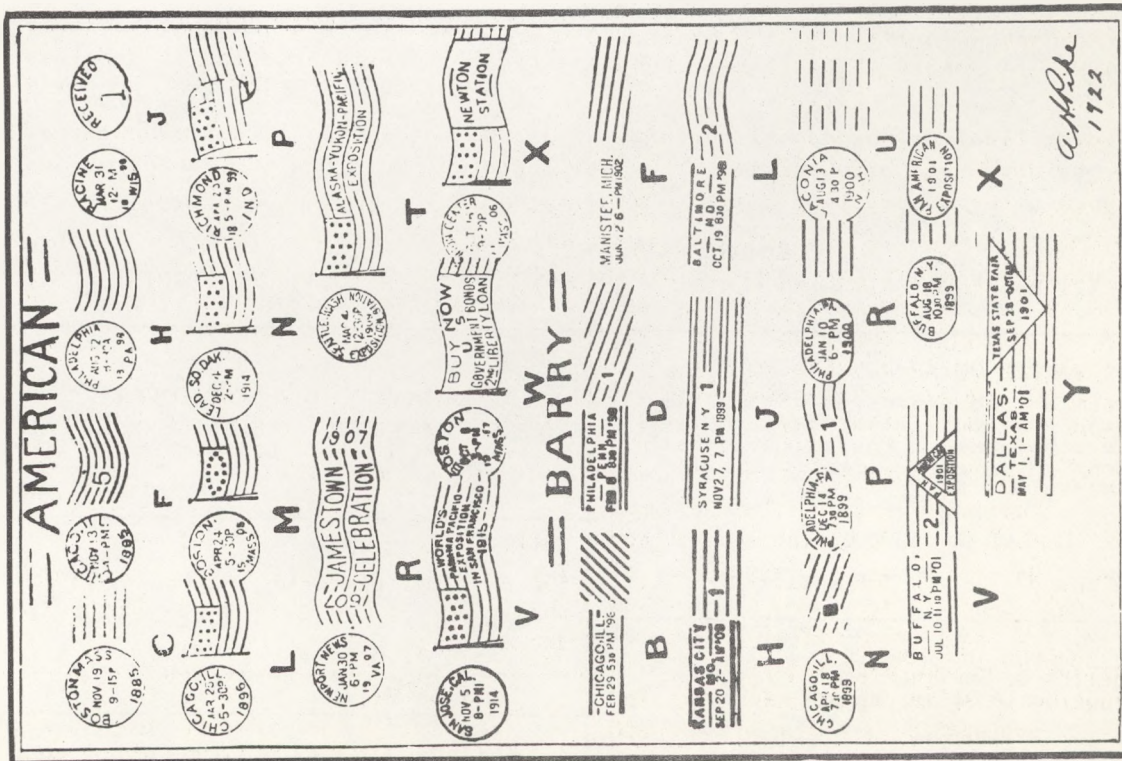
111 Robert D. Everhart

RESIGNED

188 W. Scott Pollard
362 Lewis Leigh
470 Philip Tracy Wall

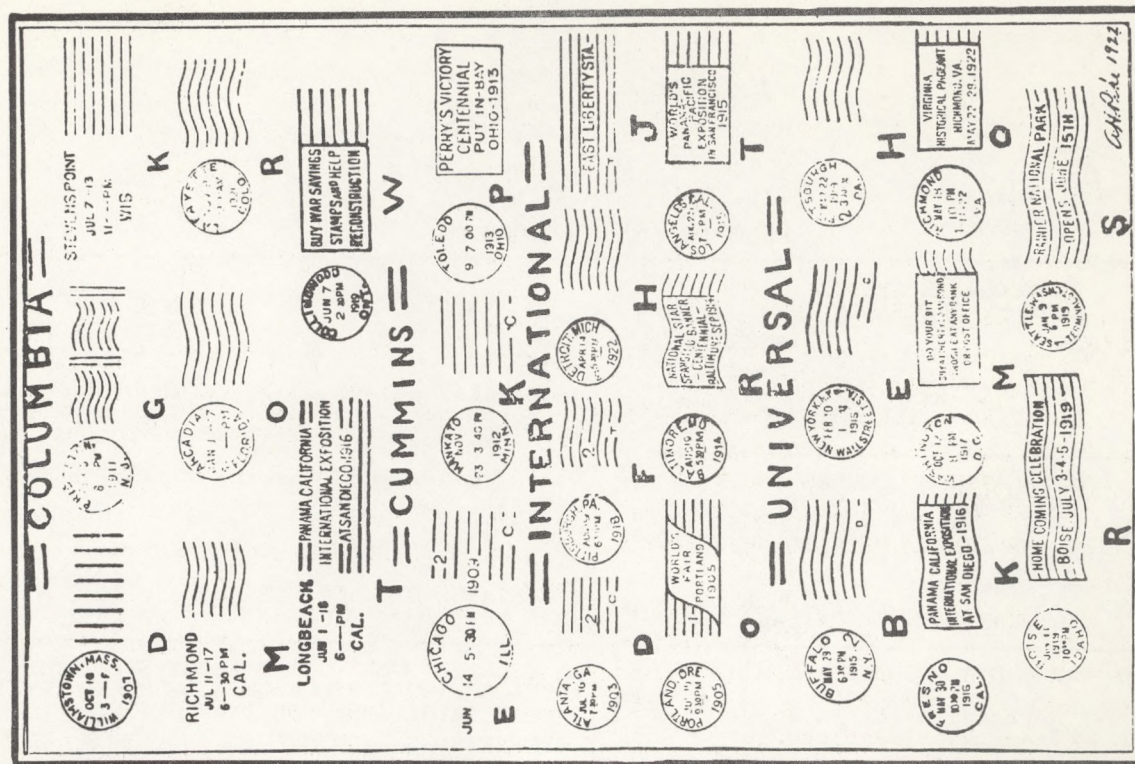
USCC has received from C. Dewar Simons 3rd
(#59) Last Day and First Day Cancellations from
Groton, Noank and Pequonock Bridge, all in Conn.

PIKE CHARTS



We owe a great deal to the late A. H. Pike for all the research work he accomplished in the late 'teens and early 'twenties. It is with pleasure that we reproduce his charts as printed in "The Collectors' Digest," Whole No. 9, for June - July, 1922.

PIKE CHARTS



Like all mortals, Pike has been proven in error on his chart as follows: Barry Type F is now believed to be of Hampden manufacture; Type J, Pneumatic; Type U, Doremus; Columbia Type D, Doremus; and Cummins Type E, time Marking.

AMONG OUR MEMBERS

Arthur H. Bond (#505) is doing research on the manufacturers of the early handstamps that were used as town-marks prior to 1870-especially in the period 1799-1840. He will appreciate information that can be furnished by any member. Address: A. H. Bond, 18 Beechwood Road, Ho-Ho-Kus, N.J.

Rev. Frederick K. Smythe (#173) has been put in charge of all Indian work of the Episcopal Church in North Dakota.

Robert H. Miller (#393) received an APS medal for his exhibit of New York Foreign Mail Cancellations at the annual exhibition of the Philatelic Society of Pittsburgh in November.

Earle E. Andrus (#496) exhibited several frames of 19th Century USA at the show put on by the Kent Philatelic Society of Grand Rapids, Mich. in October. He received the Grand Award for the best exhibit at the Show and also first award in the USA section.

Barbara R. Mueller (#360) has received an APS award for her serial article, "The Day of the Stamp and Associated Special philatelic and Postal Events" which appeared in the AMERICAN PHILATELIST late in 1958 and early in 1959.

Robert Pritchard (#454) received a Bronze Medal at the Interamerican Show held recently at Buenos Aires for his exhibit of booklet panes.

At the Convention of the Illinois Federation of Stamp Clubs held in Bloomington late in October awards went to the following: Augustus Hendelman (#296) "U. S. of America, Early American Covers from Each State and Territory"; Daniel A. Stone (#53) "Forgeries and Counterfeits of the World"; Robert Pritchard (#454) "Margin Edged Miniature Sheets".

1961 DUES

The response to our dues notice sent with the November NEWS has been very good but there are still a number of you whose dues for 1961 have not been received. If you are one of these please take care of it now while you think of it. The amount is \$3.00.

20th CENTURY UNITED STATES FANCY CANCELLATIONS

Since the double page from the Loso-deWindt book which we illustrated in the September issue was favorably received we are giving you another in this issue. On page 60 we show you a part of the 45 different cancellations which have been credited to Ed, Ky. Your Editor knows nothing of this town except that its postmaster was active during the period which produced these cancels. Both Mr. Loso and Mr. deWindt were members of USCC while compiling the material for their book. In fact our copy of the book is autographed by Mr. deWindt.

U S CANCELLATION CLUB
BENEFITS OF MEMBERSHIP

As a supplement to this issue of the NEWS we enclose an up-to-date copy of our prospectus, "Benefits of Membership". This is not changed except in the interest of brevity generally and by adding the new acquisitions to the Club's Library. The use of our Library is increasing all the while. It now contains 38 different items of which a few are unique.

The Secretary will be glad to send a copy of this prospectus along with a sample copy of the NEWS and an application blank to anyone you may wish to suggest. Just send in the name to 855 Cove Way, Denver 9, Colo.

ROMPEX 1961

Philatelic organizations in the Denver area are cooperating to make this show the best ever held in Denver. At the same time, Oct. 6-8, TMPS will be holding convention in Denver. For information write John Willard, 1025 Monroe, Denver 6, Colo.

INTERPEX 1961

Interpex 1961 will be held from Friday, March 17 through Sunday, March 19th, 1961 at the National Trade Show Building, 35th St. & 8th Ave., New York, N. Y.

Postal Slogan and Meter Society will be represented there with a lounge and competitive exhibits. For information write Moe Luff (#262) 12 Greene Road, Spring Valley, N.Y.

LIBRARY

Three items have been added to our library recently:

- #36 Nassau Street by Herman Herst Jr.
- #37 Priced Catalogue, John Fox auction, Nov. 14-6.
- #38 Providence, R.I. Postal Markings & Cancellations before the Twentieth Century.

These are available to members in the usual manner.

It has been suggested that members able to do so add to the information given in the Fox Catalogue and also that corrections be made if any are warranted.

#38 is the series of articles by John H. Smith which appeared in serial form in the NEWS. Any of you who would like a copy of this book should write Mr. Smith at 35 Baker St., Providence, R. I.

Your Secretary wishes to thank the many members who remembered him with cards this Holiday Season.

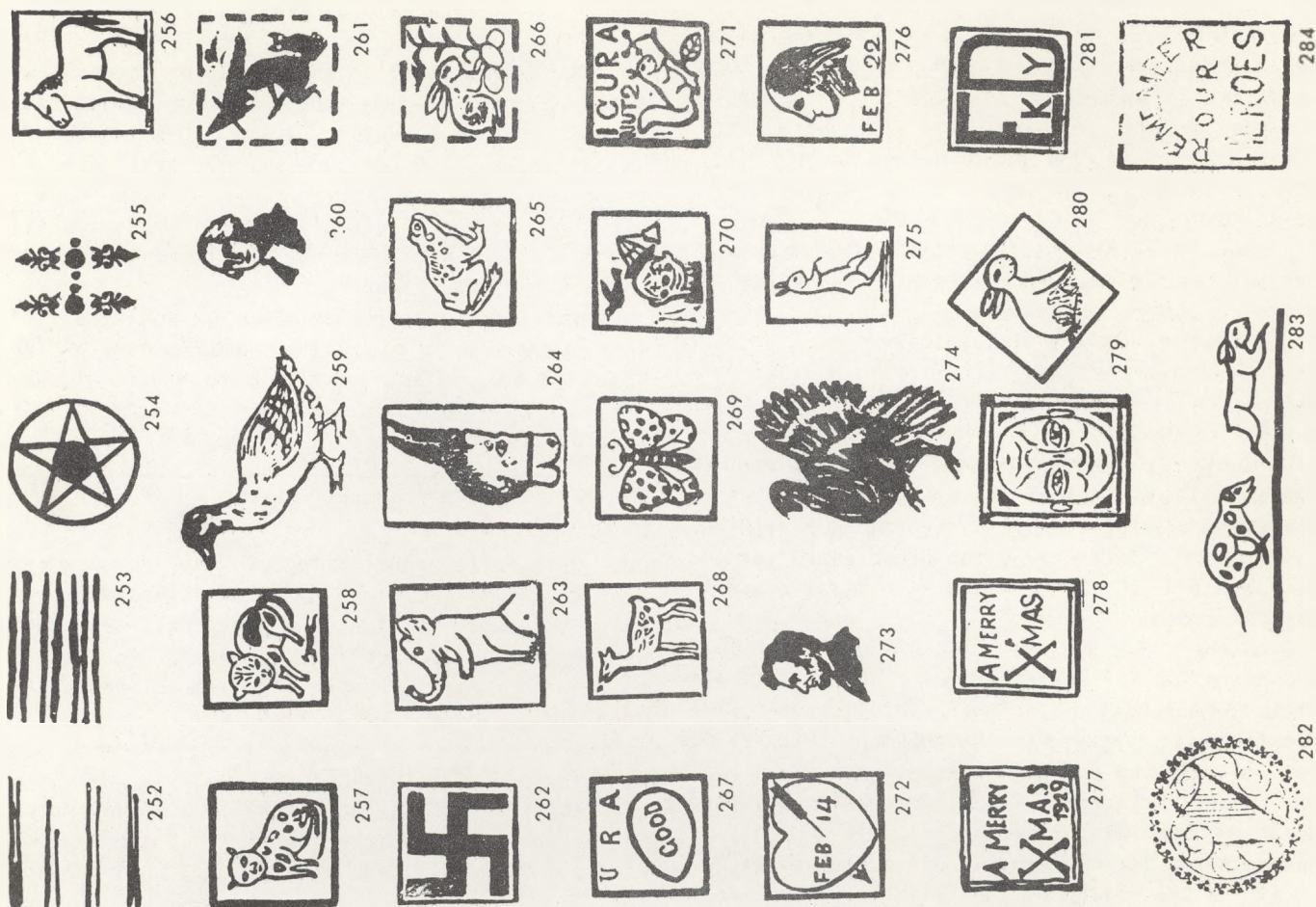


Chart No.	Community, State and Period of known use	Type of Service	Color of Cancellation	Details
252*	Ed, Ky. 10-19-35	FC	black, purple	E. S. True, PM.
253	5-24-37	FC	black, purple	
254	11-8-29—9-3-34	BS, FC	black, purple	
255	11-25-29—9-3-24	BS, FC	black, red	
256	1-2-30—8-15-34	BS, FC	purple	
257	12-21-29—8-14-34	BS, FC	black, purple	
258	1-25-30—8-15-34	BS, FC	black, red	
259	2-22-30—2-22-32	BS, FC	purple	
260	10-31-31—10-31-33	BS, FC	red	Steel die; 2-22-30 first use
261	1-9-30—9-8-34	BS, FC	purple	
262	12-23-29—8-3-34	BS, FC	black, purple	
263	8-12-31—8-18-34	BS, FC	black	
264	12-21-29—8-13-34	BS, FC	black, green	Turn cancel upside down
265	4-10-30—4-1-34	BS, FC	black	
266	3-5-30—9-8-34	BS, FC	purple, red	More common in red
267	3-10-30—9-14-34	FC	purple	
268	3-26-30—10-19-35	FC	Purple, red	Most popular cancel
269	3-14-30—9-17-34	BS, FC	Purple, red	
270	1-8-30—9-5-34	BS, FC	Purple, red	
271	2-14-30—2-14-34	BS, FC	Purple, red	
272	8-12-31—2-22-34	FC	black, purple	Purple most common color
273	11-24-32—11-29-34	FC	black, purple	
274	12-6-29—9-3-34	FC	purple, red	
275	9-12-31—2-22-34	FC	purple, red	Red most common color
276	12-10-29—12-25-29	BS, FC	black	
277	9-12-31—12-25-33	BS, FC	purple	
278	12-4-29—9-6-34	BS, FC	black	Turn cancel upside down
279	3-26-31—8-12-31	BS, FC	black, purple	
280	3-26-30—5-28-34	BS, FC	black, purple	
281	3-17-30—3-17-34	BS, FC	green, blue	
282	3-28-30—9-8-34	BS, FC	black, purple	
283	5-30-32—5-30-34	FC	purple	Used by Circle Stamp Shop of Indianapolis, Indiana May have been used on Memorial Day only.
284				

U S CANCELLATION CLUB BENEFITS OF MEMBERSHIP

The U S CANCELLATION CLUB has been, for a number of years, the leading Society devoted exclusively to the field of Postal Markings and Cancellations. Serving the interests of beginners as well as of advanced specialists it is operated for the benefit of its members.

The following Club functions and activities are of special help to the collector:

1. A Sales Department through which stamps & covers may be bought and sold.
2. A Research Department and a publicity department to add to philatelic knowledge and to publish new information.
3. An Expertizing Department to give qualified opinion on doubtful items. Daniel A. Stone, 310 Denver Theatre Bldg., Denver 2, Colo. will accept from a member of USCC, a stamp or cover and will give an opinion free of charge as to its validity. The item should be mounted on a sheet with sufficient space for notations. Return postage must be included.
4. A Library, books available to members on application. MEMBERS PAY TRANSPORTATION BOTH WAYS. See List below.
5. A Bi-monthly Magazine sent free to members. Subscription price to others \$2.00 per year.

Membership is granted through application passed upon by a Membership Committee. Dues are \$3.00 per year payable in advance. The year starts on January 1st. New members pay as follows:

Those accepted between Jan. 1 & April 30	\$3.00
" " " May 1 & Aug. 31	2.00
" " " Sept. 1 & Dec. 31	1.00

No admission fee is charged.

THE CLUB LIBRARY CONTAINS THE FOLLOWING:

- | | |
|---|---|
| <ol style="list-style-type: none"> 1. STAMPS Magazine articles on Cancellations in one loose leaf binder, nearly complete, shipping weight 13 pounds. 2. STAMPS Magazine articles on Cancellations in one bound volume, shipping weight 6 lbs. 3. NEW YORK FOREIGN MAIL CANCELLATIONS BY EDWIN MILLIKEN, shipping weight 4 ounces. 4. OBLITERATIONS & MARQUES POSTALES de ETATS UNIS du 19th SIECLE by MICHEL ZARESKI, shipping weight 3 pounds. 5. REGISTER OF SHIPS & POSTMARKS of the U.S. NAVY by FRAYNE & BARKLEY, shipping wt. 6 oz. 6. SHIPS of the U.S. NAVY LOST & DAMAGED IN WORLD WAR II WITH KNOWN POSTMARKS, by FRAYNE & BARKLEY, shipping wt. 6 oz. 7. Volume I #s I-II SHIPS & POSTMARKS of the U.S. NAVY, shipping wt. 1 lb. 8. RAPID CANCELLING MACHINES, MANUFACTURERS & IMPRESSIONS by OLSON, shipping wt. 3 oz. 9. A LIST OF ALL KNOWN POST-OFFICES IN THE TERRITORY & STATE OF WISCONSIN, Dec. 1821 to Oct. 1917 by WISCONSIN POSTAL HISTORY GROUP OF THE WISCONSIN FEDERATION OF STAMP CLUBS, shipping wt. 1 lb. 10. BULLETINS #s 1-5 WISCONSIN FEDERATION OF STAMP CLUBS, shipping wt. 1 lb. 11. THE TALE OF THE KICKING MULE by CORNELL, shipping wt. 6 oz. 12. THE GREAT MAIL by HUBER & WAGNER, shipping wt. 2 lbs. 13. POSTAL MARKINGS OF BOSTON TO 1890 by BLAKE & DAVIS, shipping wt. 5 lbs. 14. U. S. POSTAL SLOGAN CANCELS, 1950 edition, by LUFF, shipping wt. 5 oz. 15. CATALOG OF U. S. POSTAL SLOGAN CANCELS, 1953 edition, by LUFF, shipping wt. 7 oz. 16. U.S. POSTAL SLOGAN CANCEL CATALOG, 1956 edition priced, by LUFF, shipping wt. 8 oz. 17. 19th CENTURY UNITED STATES FANCY CANCELLATIONS by HERST-ZARESKI, shipping wt. 3 lbs. 18. POSTAL MARKINGS OF THE UNITED STATES 1847-51 by MANNEL HAHN, shipping wt. 5 oz. | <ol style="list-style-type: none"> 19. A CATALOGUE OF RAILROAD COMPANY-PRINTED CANCELLATIONS ON THE 1898 U.S. REVENUES by FULLERTON, shipping wt. 2 oz. 20. 20th CENTURY UNITED STATES FANCY CANCELLATIONS by LOSO & deWINDT, shipping wt. 2 lbs. 21. PRICED CATALOGUE, B. H. HANDY SALE, shipping wt. 3 oz. 22. PRICED CATALOGUE, GEORGE W. HALE SALE, shipping wt. 3 oz. 23. THE PENINSULAR PHILATELIST, Volumes 4-8, not complete, shipping wt. 1 lb. 24. FLAG CANCEL ENCYCLOPEDIA by LANGFORD, shipping wt. 6 oz. 25. THE "PAID" MARKINGS ON THE 3¢ U.S. STAMPS OF 1861 by LINN, shipping wt. 7 oz. 26. METER STAMP PRICE LIST 1955 by SWAN, shipping wt. 2 oz. 27. PRICED CATALOGUE, WM. R. STEWART SALE, shipping wt. 5 oz. 28. FLORIDA POSTAL HISTORY & POSTAL MARKINGS DURING THE STAMPLESS PERIOD by PICKET, RICE & SPELMAN, shipping wt. 2 lbs. 29. PRICED CATALOGUE, DARLINGTON SALE OF TERRITORIAL COVERS, shipping wt. 5 oz. 30. PRICED CATALOGUE, PART 2, EDWARD S. KNAPP SALE 31. MICHIGAN, MICHIGAN by GREENEBAUM 32. PRICED CATALOGUE, GEORGE B. WRAY SALE 33. INCOMPLETE FILE OF POSTAL MARKINGS 34. BULLETINS #s 1-4 EVANSVILLE STAMP CLUB "SOUTHWESTERN INDIANA POSTAL HISTORY" 35. U.S. TERRITORIAL POSTMARK CATALOGUE, WISCONSIN STAMPLESS COVER SECTION 36. NASSAU STREET BY HERMAN HERST JR. 37. PRICED CATALOGUE JOHN A FOX AUCTION NOV. 14-16, 1960 38. PROVIDENCE, R.I., POSTAL MARKINGS & CANCELLATIONS BEFORE THE TWENTIETH CENTURY. |
|---|---|

THE SALES DEPARTMENT

The Sales Department of USCC is operated much the same as are those of other philatelic organizations.

We operate six different types of circuits:

1. 19th Century off cover only
2. 19th Century covers
3. 20th Century off cover only
4. 20th Century Covers
5. Foreign covers
6. Special Selections

Circuits consist of about 12 books of stamps or of about 20 of covers. Circuit groups are made up of from 6 to 15 members and are arranged geographically to reduce cost of transportation to a minimum. Each circuit is accompanied by a letter giving full instructions for handling and a list of members to whom it is to be sent as well as a list of the books of stamps or covers included. Each member, in turn, inspects it as promptly as possible, taking those items he wishes and signing for them in the space provided. He then fills out a report blank and mails it along with remittance for material taken to the sales manager, (The Dept. is run on a cash basis), and forwards the circuit to the next member on the list, using either express or parcels post. On the regular circuits members pay transportation to the next on the list only. On special selections members pay transportation both ways, from the sales manager to them and back again.

Members wishing to sell material through the Department may get from the sales manager, sales books for 120 stamps @10¢ each, cover envelopes for up to 20 covers @ 5 for 25¢ or cover books with 12 separate containers, to give better protection to valuable items, for 20¢ each. All are specially prepared and have printed instructions, as well as space for describing the contents. Any stamp or cover which has passed through the mails may be entered. All items must be priced net and where possible pertinent information should be given. Each book or sales envelope received by the Department will be assigned a number and the owner will be notified. All material in the sales department stock is fully covered by insurance while in the possession of any member or in transit between members. This applies wherever the member may live and it is not necessary to insure parcels post shipments after the material has once been entered in the stock.

In addition to the cost of the sales books and envelopes the Sales Department charges are as follows: 1 1/2% of original retail value for insurance (minimum charge on each sales book or envelope 25¢) and 15% of actual sales made for the Sales Manager's commission (Minimum charge for this too on each sales book or envelope 25¢). These two charges along with cost of returning remainders to owner will be deducted at the time of retirement. Sales books and Envelopes will be retired and settlement made when they have been all around or when they are too far depleted to send out again. The length of time required will vary somewhat depending on saleability of material and promptness of members in forwarding circuits. We try not to keep any sales book or envelope over 18 months but some do run over this.