



Cancellation Club NEWS

VOL. 5 - NO. 10 - WHOLE NO. 53

JULY - 1961



1.



2.



3.



4.



5.



6.



7.



8.



9.



10.



11.



12.



13.



14.



15.



16.



17.



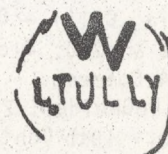
18.



19.



20.



21.

SEE PAGE 78 FOR DESCRIPTIONS.

THE U S CANCELLATION CLUB NEWS

Published six times a year, January, March, May, July, September and November by the U S CANCELLATION CLUB and sent free to members.

Back Numbers 25¢ each to members.

Subscription price to others: \$2.00 per yr.
35¢ per copy.

ADVERTISING RATES:

Full Page.....\$15.00

Half Page.....8.00

Quarter Page.....4.50

Column inch.....1.00

Adlets 2¢ per word, min. 50¢

Address communications to the Club Secretary
C. D. Root, 855 Cove Way, Denver 9, Colorado

NEW MEMBERS

- 551 Roger W. Kline, 2194 Lewis Road, South Wales, N.Y.- General; USA singles and used Blocks; HPO Covers; RPOs
- 552 Mrs. Helen M. Read, 13 May St., North Andover, Mass.- USA: Vatican; Israel; Cancellations on early USA.
- 553 Simon E. Herring, 932 N. Main St., Bellefontaine, Ohio- Old Ohio Covers; Railroad Covers of all kinds; First Day Covers.
- 554 Chester C. Peterson, 1951 W. Waveland Ave., Chicago 13, Ill.- 19th Century Covers bearing Chicago Postal Cancellations
- 555 Gerald J. Finch, 3511 Mariposa Road SW, Huntsville, Ala.- Fancy Strikes; Freaks & Unusuals such as Precancel from Anthony, New Mex.-Texas, P.O. located on border
- 556 Douglas M. Rice, Clement Road, (P.O. Box 54) Granville, Mass.- Common Machine & Hand Cancellations now in general use from different postoffices rather than types or styles.
- 557 Merrill S. Johnson, 2508 Vassar Ave., Visalia, Calif.- US Postal Stationery Entireties mint & used; 19th Century Covers with unique Cancellations; US Gov't Postal Cards with Iowa Fancy Cancels; U.N. (N.Y.); USA singles and Plate Blocks
- 558 Paul M. Beattie, 3902 Newport Gap Pike, Wilmington 8, Del.- USA & Canada (Hale)
- 559 John F. Rider, 350 W. 57th St., New York 19, N.Y.- Chili Provisionals 1900-5; Postal History Republic of Venice; Trans-Jordan 1920-7; Cancellations of New York City; USA Cancellations.
- 560 H. R. Fishback Jr., M.D., 1526 W. Laurel, Visalia, Calif.- Cancellations on all 3¢ Greens & #210; Slogans & Cancels "direct" on USA Commems.
- 561 Helen DeGhelder, 7752 Wise Ave., St. Louis 17, Mo.- 19th Century Markings in particular; General Collection USA & some Foreign; Meters; Slogans; Correspondence invited.
- 562 Vernon A. Johnson, 506 Seville Road, Apt. 1, Bloomington, Ill.- #1s; Scandinavia; "Used Abroad"; "On-the-Nose" Cancels; USA; Ryukyu Islands; Japan
- 563 John Birkinbine II, 540 E. Hermoso (P.O. Box 1001), Lindsay, Calif.- USA 1869 issue.

CORRECTION

483 William J. Bomar (address should be added)
2316 Amber Way, Decatur, Ga.-

MEMBERSHIP REVIVED

357 W. R. DeKay Jr., 2532 Clarendon, Louisville, Ky.- 19th Century Covers.

FRONT PAGE

The illustrations on the front page are of Cancellations in the collection of James R. Littleton (#363). Mr. Littleton would welcome information on all marked "Unknown"

- | | |
|---|---------------------|
| # 1 Columbus, Ga. | #11 Concord, N.H. |
| 2 Egg Harbor, N.J. 3¢'69 | 12 Rising Sun, Va. |
| 3 Quincy & St. Joseph RPO | 13 Whitehall, N.Y. |
| 4 Warsaw, Ky. | 14 Alton, Ill. |
| 5 Louisville, Ky. | 15 Lockport, N.Y. |
| 6 Unknown | 16 Unknown |
| 7 Unknown | 17 Unknown |
| 8 Frankfort, Ky. | 18 Brattleboro, Vt. |
| 9 Unknown | 19 Unknown |
| 10 Unknown | 20 Ann Arbor, Mich. |
| 21 I. Tully, Mail Clerk, Logans & Keopup R.R. RPO | |

WORLD WAR II POSTMARKS

From A. E. Lewandowski (#520) we have 5 copies of the Type Charts of U.S. Military Postmarks of World War II. The Donor specified that these are to be given to interested members. Accordingly they will be sent to the first five members requesting a copy.

AWARDS

At the 16th Annual Central Pennsylvania Stamp Collectors Get Together held at State College, Pa. Early in June the USCC Certificate was awarded to Mr. W. Newton Landis, 205 W. Greenwood Ave., Lansdowne, Pa. for a magnificent showing of Postal Markings on USA Stampless Covers. Kenneth L. Rice (#339) received a Gold Medal for his "Florida Postal History".

At the recent Wisconsin State Convention Arthur VanVlissingen (#49) won a Grand Award and a first in the section for his exhibit of Wisconsin Patriotic Covers. Harold Richow (#501) won a First for his "Fancy Cancels on the 1861 Issue on Cover". Mr. Richow was also elected President of the Wisconsin Postal History Society.

When In Southern California VISIT --

C. H. BERKSON

213 West 4th Street
Los Angeles, Calif.

for

STAMPS

COVERS

COINS

20 YEARS ON 4th STREET

CONFEDERATE STATES
ARE MY SPECIALTY

MONTHLY LISTS

APPROVALS

ALEX ULLRICH
1443 PLEASANT LANE
GLENVIEW, ILLINOIS

ASDA ASDA

OLD U. S. COVERS

ARE MY SPECIALTY!

particular attention given to U. S. C. C.
members special needs in old U. S. covers,
Approvals gladly submitted on request.

Write for my FREE special list of old U.S.
covers.

E. N. SAMPSON

3 Robinson Drive Baldwinsville, N. Y.

CANCELLATIONS, COVERS,
TOPICAL SEALS (NON SCOTT)
TRAINS, SPORTS, SHIPS, RED CROSS,
CHARITIES, RELIGION, ROCKETS, ETC.

APPROVALS STAMPMART 189 W. Madison
A.S.D.A. OTOKAR CERNY Chicago 2, Ill.

FLORIDA COVERS

wanted
Can use anything prior to about
1900. Please submit priced to:

BRUCE W. BALL 1635 duPont Bldg.
#234 Miami 32, Fla.

FILLING WANT LISTS IS MY SPECIALTY
AN EXCEPTIONAL STOCK OF STAMPS AND COVERS
AVAILABLE FOR INSPECTION
ADVERTISING, PATRIOTICS, CANCELS, ETC.

R. H. MILLER

239 Lynwood Drive Pittsburgh 35, Pa.

WANTED

COVERS CANCELED GEORGETOWN,
D.C. PLEASE SUBMIT ALL COVERS

TO:

HAL N. OTTAWAY 702 So. Hillside
Wichita 11, Kansas

U.S. Military Postmarks Of The
Second World War And Later

ARMY - NAVY - MARINE CORPS

FOREIGN MILITARY POSTMARKS

SECOND WORLD WAR AND LATER

WHO WISHES TO TRADE
NOS. 11, 26, 65, 73 AND NYFM FANCY CANCELS
FOR MY

20th CENTURY FANCY REGISTRY COVERS

J. R. Kesterson R.D. 1 Martinsville, N.J.

Entires only. A phantastic stock is at your
fingertips. Literature list against 4¢
stamped and addressed envelope

L A V A

Box 186

New York 59

WANT COVERS
INSECT OR LINCOLN FLAVOR

CORNER CARDS, SLOGANS, STAMPS, POSTMARKS, ETC.
WILL BUY OR EXCHANGE MODERN COMMERCIAL
COVERS YOUR CATEGORIES
IRVING KEISER
3783 PUKALANI PLACE, HONOLULU 16, HAWAII

PHILATELIC PRESS IN GREECE

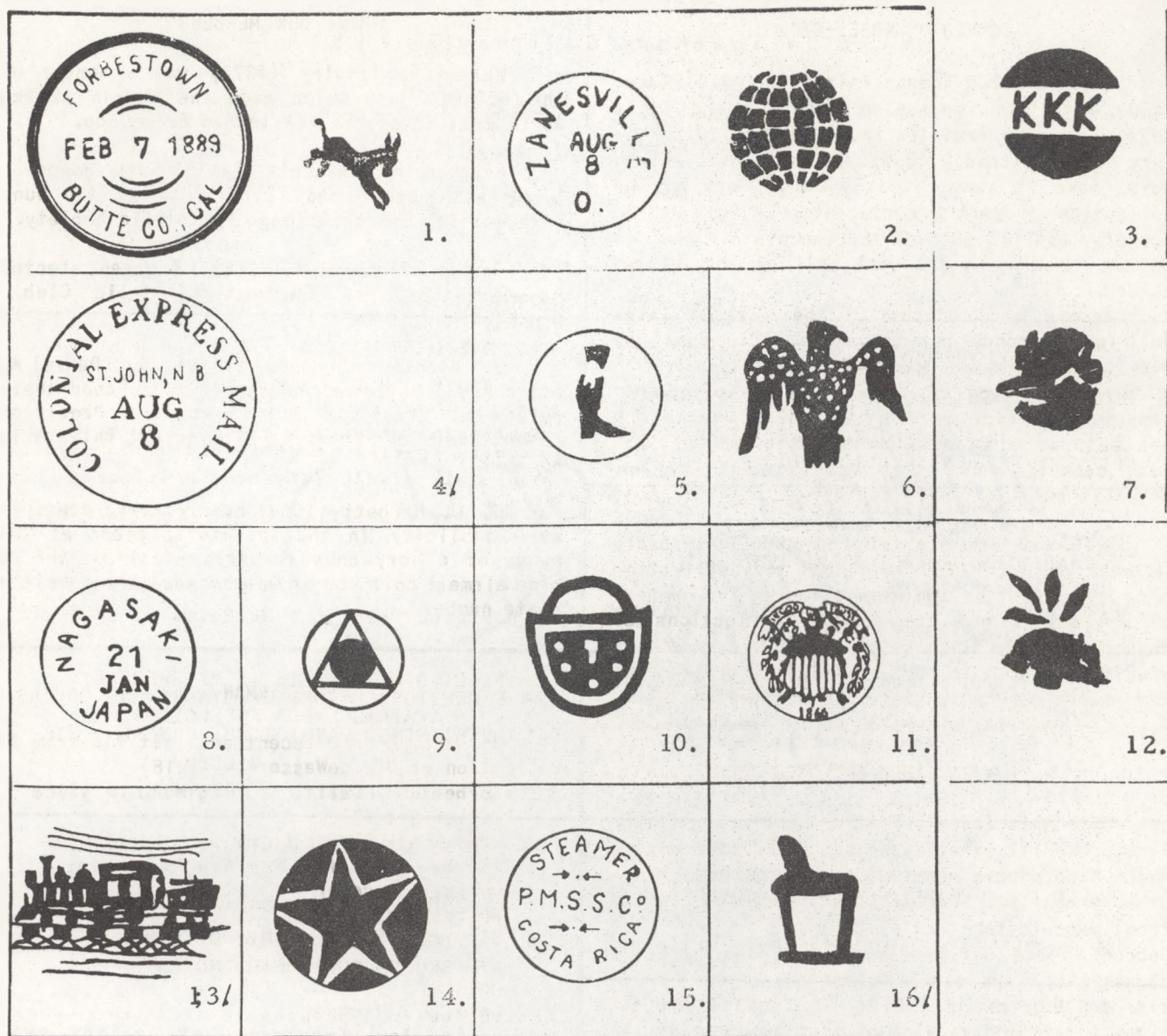
Moses C. Constantinis, Patission 126,
Athens 8, Greece has sent us a copy of his
booklet, "The Philatelic Press in Greece".
This is an English translation from the original
Greek and contains information about a large
number of catalogues and periodicals. Members
wishing to see this booklet may write the Secre-
tary of USCC in the usual manner although we have
not as yet included it in our Library.

BACK #s NEWS & QUARTERLY

Recently we have received gifts of back
numbers of our publications from Frank W.
Scheer (#300) and from Burleigh Jacobs (#16).
These gifts have enabled us to fill orders for
back numbers from some of the new members. In
behalf of the Club your Secretary wishes to
thank these members and to urge other members
who have files which they no longer need to make
the Club a present of them.

REMEMBER !!!

PATRONIZE OUR ADVERTIZERS



Sig. Giuseppe Partalardi



Livorno (Italy)

SOCKED-ON-NOSE, ETC.

A letter from Edmund Fairchild (#259) takes issue with the impression that appears to be left from some articles on collecting 20th Century Cancellations. Some of these articles, he says, make it appear that one can form a fine collection of such cancels entirely from waste-baskets, and, if some of the cancels did have to be bought they would cost only a cent or two apiece.

Anyone with access to the mail of large mail order concerns would be surprised at how many stamps he would have to inspect to get even a few "Socked-on-the-Nose" cancels either on Commemoratives or regular postage. Anyone who has made an effort to prepare his own mail for such cancels knows that very few of them do actually get the finely centered cancel he hoped for.

We know that our sales department is badly in need of such items and that they will bring more than a cent or two when offered. The numbers of collectors who are forming collections of these stamps is increasing all the time and we wish to be able to partly satisfy their demands for really nice 20th Century cancellations.

EXTRA PAGES ENCLOSED

With this issue we enclose two extra items. First; One illustration on the front page of the March NEWS became misplaced so it did not photograph properly. Therefore we enclose another front page to take its place.

Second; Since our Library has a number of new acquisitions and since we ran out of our "Benefits of Membership" printed in January, we enclose an amended version of that page.

ADDITION TO LIBRARY

51 Official Handbook of the Post Office Registration Labels of the States and Commonwealth of Australia by R. Turley, a gift from Mr. Turley. shipping weight 4 oz. This is available to members as usual.

ZYLONITE

From Arthur H. Bond (#505) Mr. Stratton has information on this cancel which was illustrated in the March NEWS. Zylonite was a small town in Berkshire County, Mass. between Adams and North Adams. The Post Office was established in 1885 and was still in existence in 1891. Maurice C. Blake of Boston sent much the same information to Mr. Stratton also.

AMONG OUR MEMBERS

Walton E. Tinsley (#376) was a member of the WESTPEX jury which made the awards at the April meeting of WESTPEX in San Francisco.

Stephen M. Farndell (#371) was honored, along with other past Presidents at the June 15th meeting of the Chicago Philatelic Society.

Gaspere Signorelli (#368) has been elected President of the Flatbush Philatelic Club, Brooklyn, N. Y.

J. Stanley Thompson (#439) and Daniel A. Stone (#53) have been nominated to succeed themselves as President and First Vice President respectively of the Trans-Mississippi Philatelic Society.

J. L. Hargett (#508) has received considerable publicity in the philatelic press as the owner of a very unusual strip of six of the 7¢ blue airmail coil stamps which shows the complete plate number.

DeWASSERMAN

On page 80 some recent acquisitions from the Collection of Dr. deWasserman (#418).

- # 1 Forbestown, Calif. Kicking Mule on piece with Scott #213.
- 2 Zanesville, O. on Cover with Scott #65.
- 3 KKK on #210 off cover, Origin unknown
- 4 On #24 off cover
- 5 Whitestown, N.Y. on #65 off cover
- 6 St. Louis Eagle on #158 off cover
- 7 Lynx's Head on #210 off cover, origin unknown
- 8 On #147 off cover
- 9 Lower Salem, O. on #184 off cover (Purple)
- 10 Waterbury, Conn. on #114 off cover
- 11 Marshall, Wis. on #77 off cover
- 12 Teddy Bear on 92 off cover (red) origin ?
- 13 S. Hanson, Mass. on 184 on piece
- 14 Star on #65 off cover
- 15 on #114 off cover
- 16 Mortar & Pestle on #158
- 17 Union Soldier on cover to Italy pair 10¢
- 61 & 1¢ 61, drawing of cancel in lower left corner.

Dr. deWasserman hopes someone will enlighten him on the origins of those marked "unknown".

SOUVENIR METER SLOGANS

On Page 82 we illustrate a double page from the Feb.-Mar. issue handbook of THE METER COLLECTOR, "Souvenir Meter Slogans Used at Philatelic Exhibitions". This issue can be secured from William Edwards, 19 Clearland Road, Plainview, N.Y. for 35¢.

For/VICTORY/SEPAD STAMP/SHOW AWARDS/SAVINGS STAMPS; green
Meter 59124, Philadelphia, Pa. (34-65; 86)
At Sepad 1942 Stamp Show, Philadelphia, May 17-23, 1942



S.P.A. FORTY-EIGHTH/ANNUAL/CONVENTION/DETROIT/1942; red
Specimen indicia, Detroit, Mich. (47-40)

Prepared at SPA Convention, Detroit, Aug. 19-23, 1942

SEPAD EXHIBITION/TENTH AMERICAN/PHILATELIC CONGRESS

Meter 106210, Philadelphia, Pa. (48-65)

At Sepad 1944 Exhibition, Philadelphia, Dec. 1-3, 1944

Now Buy Victory Bonds

Meter 109236, Philadelphia, Pa. (48-65)

This non-philatelic slogan was used at Sepad 1945 Exhibition, Philadelphia, Nov. 16-18, 1945.

SEPAD'S
NATIONAL STAMP
EXHIBITION



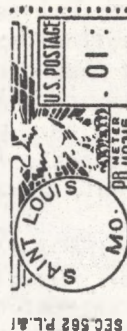
SEPAD'S/NATIONAL STAMP/EXHIBITION; red

Meter 109236, Philadelphia, Pa. (48-65; 147)

Used at Sepad 1946 Exhibition, Oct. 18-20, 1946 and at

Sepad 1947 Exhibition, Oct. 24-26, 1947, Philadelphia.

A different meter may have been used in 1946.



1847-1947/CENTENARY/100/INTERNATIONAL/PHILATELIC/EXHIBITION
Meter 110316, Saint Louis, Mo. (48-65; 146); red

GRAND CENTRAL/PALACE/MAY 17-25, 1947/NEW YORK/1847-1947/CEN-
TENARY/100/INTERNATIONAL/PHILATELIC/EXHIBITION

Meter 110316, Saint Louis, Mo. (48-65; 146); red

These two slogans used in 1946 and 1947 by the publishers of the now defunct "Philately".

SEE PAGE 81 FOR DESCRIPTIONS.



SEPAD/1940/STAMP EXHIBITION (Illustrated); red

Meter 100604, Philadelphia, Pa. (48-65; 146)

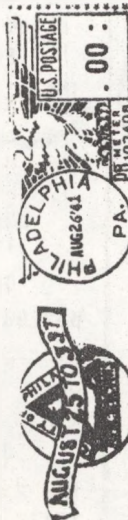
Used by Pinney-Bowes at Philadelphia and at Sepad 1940 Stamp Exhibition, Philadelphia, Nov. 4-9, 1940.



Third Annual/EXHIBITION/CALIFORNIA/COLLECTORS/CLUB/HOTEL
WHITCOMB/SAN FRANCISCO/APRIL 18-20, 1941 (illustrated); red

Meter 103130, San Francisco, Calif. (48-65; 146)

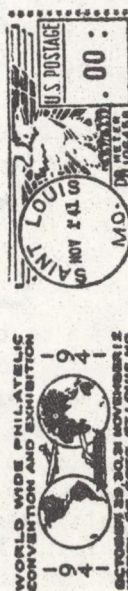
John Coulthard reported in Chambers Stamp Journal, May 19, 1941: "I drew a souvenir (meter) slogan for the occasion, but time was too short to arrange for mailing, so it appeared only on tapes and specimen covers--and the exhibition booklet."



AUGUST 25 TO 31ST (On ribbon over SPA seal); red

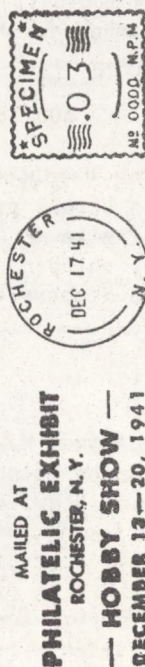
Meter 103408, Philadelphia, Pa. (48-65; 146)

Used at the Society of Philatelic Americans Convention, Philadelphia, Aug. 25-31, 1941.



WORLD WIDE PHILATELIC CONVENTION AND EXHIBITION/1941/OCTOBER
29, 30, 31 NOVEMBER 1, 2/HOTEL DE SOTO, ST. LOUIS, MO. (Globes,
ship, plane); red

Meter 106458, Saint Louis, Mo. (48-65; 146)



PHILATELIC EXHIBIT
ROCHESTER, N.Y.

— HOBBY SHOW —
DECEMBER 13-20, 1941

MAILED AT PHILATELIC EXHIBIT/ROCHESTER, N. Y./HOBBY SHOW/
DECEMBER 13-20, 1941

Meter 7203 N.P.M., Rochester, N. Y. (40-65; A136)

Meter 8854 N.P.M., Rochester, N. Y. (40-65; A136)

Specimen indicia, Rochester, N. Y. (40-40)

These three items prepared at the show on dates shown.

TERRITORIAL COVER COLLECTING

by Arthur Van Vlissingen

Continued from the May NEWS.

Those of the regulars who survived cholera returned East to sing the praises of Wisconsin. Most of them had never seen it but they agreed it was a land of milk and honey. Their volunteer press-agentry spread "Western Fever" across the Northeastern States, particularly New England and New York. This itch to emigrate affected many who had accumulated some money and many more who had none. By the Erie Canal from its terminals at Albany & Troy to Buffalo and thence by sailing vessel or steamer they stormed up the Great Lakes. Emigration to Wisconsin got a good start in 1833-5 then swelled to a flood.

The first Territorial census in 1836 showed 11,683 people living in what three years before had been a "howling Wilderness". By 1848, although successive acts by Congress had trimmed the land area of Wisconsin to a mere 20% of what it was in 1836 the census-takers enumerated 210,546 inhabitants.

The postal service erupted in a never completely successful effort to keep up with the exploding population of Wisconsin Territory. Where fifteen years earlier there had been no mail service except at a handful of settlements on the major water routes and along the southern rim, in the last month of Territorial status more than 300 post offices had been established. Contract mail routes now crisscrossed the region.

By today's standards, few of these post offices would be approved by Washington. But at that time the post office had to be close enough to the settler to reach through mud and snow-drifts on his occasional trip to the cross-roads store. He expected, and rightly so, to receive his old hometown newspaper and his letters from the old folks back home.

The typical Territorial post office served a mere handful of people who had neither time to write nor money to pay postage. The annual receipts of many a cross-roads post office totaled some such figure as \$4.38 or \$6.72 even though each letter to or from the East cost 25¢. The old postal reports make it clear why covers have turned up from only about one third of the post offices in Wisconsin Territory. They also help us understand why, of approximately 125 Territorial post offices whose markings are known on cover, more than 40 are represented by just one single cover which has survived and is known to collectors today.

If as many collectors were seeking these old folded letters as would like to buy the more celebrated rarities, a cover with manuscript

markings from any one of these 40 cross-roads post offices would rank in value along with such fabulous one-of-a-kind stamps as the British Guiana 1¢ Magenta. In comparison with the number of territorial covers now extant from most Wisconsin towns the 24¢ inverted airmail of 1918 is common. A whole sheet of that so-called rarity was salvaged but only a dozen of the biggest, busiest towns in Wisconsin have left us as many as 20 covers carrying their town markings prior to May 29, 1848.

Like any other collecting specialty, Wisconsin Territorial Covers may, at times, require an amount of skilled detection and commonsense deduction to arrive at their exact status. For example, several postmasters thriftily continued after statehood to use town markings that include such initials as "W.T." & "Wis.T." Other postmasters, looking ahead to eventual statehood, used plain "Wis." while they were still territorial. Unless such a cover can be proved to have been used before admission day it cannot claim territorial rank. Some towns west of the Mississippi continued using their Wisconsin markings after they were in Iowa. For that matter some covers were stamped or written with "M.T." or "Mic. T." in the town mark after they were transferred to Wisconsin Territory.

So the collector of a questioned item looks for year dates inside the letter or in the recipient's endorsement. If both these are missing the key to the secret may be in the town name, some were changed before statehood, or in the writer's reference to an historical event or in a cancellation or a color of ink that sets the date within certain years. Postal rate markings often tell conclusively whether the cover was used before July 1, 1845, the date upon which "cheap postage" was first tried in the USA.

From March 3, 1825 to July 1, 1845 U.S. domestic letter single rates were as follows:

up to	30 miles	6¢
"	80 "	10¢
"	150 "	12½¢
"	400 "	18½¢
over	400 "	25¢

Thereafter, during Wisconsin's Territorial period rates were 5¢ up to 300 miles and 10¢ for over 300 miles. In general the 10¢ rate is the only puzzler and it can be solved by checking the distance from origin to destination.

Successive changes in territorial and state boundaries makes any study of Wisconsin Territorial post offices less simple than might be expected. When cut off from Michigan Territory in 1836, Wisconsin Territory comprised 280,397 square miles. When Iowa Territory was cut from Wisconsin in 1838 Wisconsin Territory thereby

Continued on Page 84.

Cont. from Page 83.

lost 70% of its original area and retained only 86,016 square miles.

Iowa, in turn, lost part of its area when it became a state in 1846. The portion lost became a part of Minnesota Territory in 1849. There were three post offices in this area which constitute a distinct group that is eagerly sought by collectors of Michigan, Wisconsin, Minnesota and Iowa.

Wisconsin again lost area and shrank to 56,066 square miles when it achieved statehood in 1848. The 29,950 square miles lost in 1848, mostly a wilderness was temporarily held by Congress in an unorganized unit called "Territory of Wisconsin" until it, likewise, became part of Minnesota Territory in 1849. It contained four post offices. Covers from these offices are considered gems by any Michigan, Wisconsin or Minnesota collectors lucky enough to possess them.

SALES DEPARTMENT

We make a serious effort to pack our circuits securely even to the extent of paying about 15¢ apiece for corrugated paper boxes for the cover circuits. Usually these last long enough to complete the trip but sometimes we get reports from members that a circuit has arrived in bad shape. We realize that postal personnel sometimes abuse shipments beyond all reason, and, therefore, urge all members to pack carefully and to remember that the box must be used by all the other members whose names are on the list.

We have set up the Department in the way that we thought would best accommodate all members using it as buyers or as sellers, separating circuits of 19th Century material from those containing 20th Century items. Some members, in preparing their material for sale enter items from both Centuries in the same containers. This may be a much better way than the one we have arranged. Expressions from members on this question will be welcome. Books with material from both Centuries take longer to circulate since there are more groups to which they may go.

As we always do need fine material in all categories. Please let us have any material you no longer need. We are sure our membership comprises the world's best market for Cancellations of all types.

Also we urge you to be prompt in forwarding and accurate in reporting. We now have to charge 5¢ for the notice we send members who make errors in their reports. Also the cards of reminder we send members who do not report promptly are a continual expense.

COLLECTION FOR SALE

One of our members has left with us for sale a collection of "Miniature Sheets". Each sheet has eight stamps when complete, the four corners and one from each side, top and bottom. Sixty-two stamps between 1944 and 1952 are included, several of them complete. All stamps have "Socked-on-the-Nose" Cancellations. There are about 400 stamps, all Commemoratives or Air Mails. We believe parts of this collection, when completed, would make an attractive exhibit. We have been informed that the Peerless Album Co., Box 841, Aurora, Ill. has designed an album page for these miniature sheets which will fit a three ring binder. The Collection will be sent on approval to any interested member.

WICHITA

Members of USCC have reserved less than one third of the allotted 300 frames for the coming USCC exhibition to be held in Wichita October 13, 14 and 15th. Reservations are in from Frank Stratton, Burleigh Jacobs, Hal Ottoway, Lee Cornell and Dr. Robert deWasserman from Belgium. Additional tentative reservations have been made by five USCC members bringing the total to 84 frames.

It is hoped that the entire 300 frames will be reserved by USCC members but, in the event the members fail to reserve all the frames by August 15th, collectors other than members of USCC will be invited to exhibit and compete for trophies.

A copy of the prospectus and entry forms have been sent to all members. In case some of them have been lost or mislaid or not received additional copies may be obtained from Lee H. Cornell, 706 Orpheum Bldg., Wichita 2, Kans.

FLAG CANCEL SOCIETY

The Flag Cancel Society was born on Flag Day, June 14, 1961. Of its officers William J. Bomar (#483) is Vice President and Edwin E. Puls (#60) is a Director. A former member of USCC, Harry Taber, Sidney Center, N.Y. is the Secretary. Yearly dues are \$3.00. Purpose is to make the collecting of Flag Cancels even more enjoyable. Information may be obtained from the Secretary. We offer our very best wishes for success.

CONSERVATION

The Collectors Club of Seattle of which Deane C. Bartley (#119) is Executive Secretary, is taking a leading part on promoting the issuing of a stamp or series of stamps to recognize philatelically the importance of National Park type Conservation. It is thought that the event of the International Conference on National Parks planned for Seattle in 1962 would be a good time to issue such a stamp. We are urged to help in promoting this project.

U S CANCELLATION CLUB BENEFITS OF MEMBERSHIP

The U S CANCELLATION CLUB has been, for a number of years, the leading Society devoted exclusively to the field of Postal Markings and Cancellations. Serving the interests of beginners as well as of advanced specialists it is operated for the benefit of its members.

The following Club functions and activities are of special help to the collector:

1. A Sales Department through which stamps & covers may be bought and sold.
2. A Research Department and a publicity department to add to philatelic knowledge and to publish new information.
3. An Expertizing Department to give qualified opinion on doubtful items. Daniel A. Stone, 310 Denver Theatre Bldg., Denver 2, Colo. will accept from a member of USCC, a stamp or cover and will give an opinion free of charge as to its validity. The item should be mounted on a sheet with sufficient space for notations. Return postage must be included.
4. A Library, books available to members on application. MEMBERS PAY TRANSPORTATION BOTH WAYS. See List below.
5. A Bi-monthly Magazine sent free to members. Subscription price to others \$2.00 per year.

THE CLUB LIBRARY CONTAINS THE FOLLOWING:

1. STAMPS Magazine articles on Cancellations in one loose leaf binder, nearly complete, shipping weight 13 pounds.
2. STAMPS Magazine articles on Cancellations in one bound volume, shipping weight 6 lbs.
3. NEW YORK FOREIGN MAIL CANCELLATIONS BY EDWIN MILLIKEN, shipping weight 4 ounces.
4. OBLITERATIONS & MARQUES POSTALES de ETATS UNIS du 19th SIECLE by MICHEL ZARESKI, shipping weight 3 pounds.
5. REGISTER OF SHIPS & POSTMARKS of the U.S. NAVY by FRAYNE & BARKLEY, shipping wt. 6 oz.
6. SHIPS of the U.S. NAVY LOST & DAMAGED IN WORLD WAR II WITH KNOWN POSTMARKS, by FRAYNE & BARKLEY, shipping wt. 6 oz.
7. Volume I #s I-II SHIPS & POSTMARKS of the U.S. NAVY, shipping wt. 1 lb.
8. RAPID CANCELLING MACHINES, MANUFACTURERS & IMPRESSIONS by OLSON, shipping wt. 3 oz.
9. A LIST OF ALL KNOWN POST-OFFICES IN THE TERRITORY & STATE OF WISCONSIN, Dec. 1821 to Oct. 1917 by WISCONSIN POSTAL HISTORY GROUP OF THE WISCONSIN FEDERATION OF STAMP CLUBS, shipping wt. 1 lb.
10. BULLETINS #s 1-5 WISCONSIN FEDERATION OF STAMP CLUBS, shipping wt. 1 lb.
11. THE TALE OF THE KICKING MULE by CORNELL, shipping wt. 6 oz.
12. THE GREAT MAIL by HUBER & WAGNER, shipping wt. 2 lbs.
13. POSTAL MARKINGS OF BOSTON TO 1890 by BLAKE & DAVIS, shipping wt. 5 lbs.
14. U. S. POSTAL SLOGAN CANCELS, 1950 edition, by LUFF, shipping wt. 5 oz.
15. CATALOG OF U. S. POSTAL SLOGAN CANCELS, 1953 edition, by LUFF, shipping wt. 7 oz.
16. U.S. POSTAL SLOGAN CANCEL CATALOG, 1956 edition priced, by LUFF, shipping wt. 8 oz.
17. 19th CENTURY UNITED STATES FANCY CANCELLATIONS by HERST-ZARESKI, shipping wt. 3 lbs.
18. POSTAL MARKINGS OF THE UNITED STATES 1847-51 by MANNEL HAHN, shipping wt. 5 oz.
19. A CATALOGUE OF RAILROAD COMPANY-PRINTED CANCELLATIONS ON THE 1898 U.S. REVENUES by FULLERTON, shipping wt. 2 oz.
20. 20th CENTURY UNITED STATES FANCY CANCELLATIONS by LOSO & deWINDT, shipping wt. 2 lbs.
21. PRICED CATALOGUE, B. H. HANDY SALE, shipping wt. 3 oz.
22. PRICED CATALOGUE, GEORGE W. HALE SALE, shipping wt. 3 oz.
23. THE PENINSULAR PHILATELIST, Volumes 4-8, not complete, shipping wt. 1 lb.
24. FLAG CANCEL ENCYCLOPEDIA by LANGFORD, shipping wt. 6 oz.
25. THE "PAID" MARKINGS ON THE 3¢ U. S. STAMPS OF 1861 by LINN, shipping wt. 7 oz.
26. METER STAMP PRICE LIST 1955 by SWAN, shipping wt. 2 oz.
27. PRICED CATALOGUE, WM. R. STEWART SALE, shipping wt. 5 oz.
28. FLORIDA POSTAL HISTORY & POSTAL MARKINGS DURING THE STAMPLESS PERIOD by PICKET, RICE & SPELMAN, shipping wt. 2 lbs.
29. PRICED CATALOGUE, DARLINGTON SALE OF TERRITORIAL COVERS, shipping wt. 5 oz.
30. PRICED CATALOGUE, PART 2, EDWARD S. KNAPP SALE
31. MICHIGAN, MICHIGAN by GREENEBAUM
32. PRICED CATALOGUE, GEORGE B. WRAY SALE
33. INCOMPLETE FILE OF POSTAL MARKINGS
34. BULLETINS #s 1-4 EVANSVILLE STAMP CLUB "SOUTHWESTERN INDIANA POSTAL HISTORY"
35. U.S. TERRITORIAL POSTMARK CATALOGUE, WISCONSIN STAMPLESS COVER SECTION
36. NASSAU STREET by HERMAN HERST JR.
37. PRICED CATALOGUE JOHN A. FOX AUCTION NOV. 14-16, 1960
38. PROVIDENCE, R.I., POSTAL MARKINGS & CANCELLATIONS BEFORE THE TWENTIETH CENTURY.
39. MAINE POSTAL HISTORY & POSTMARKS by STERLING T. DOW
40. U.S. STAMPLESS COVER CATALOGUE
41. PONY EXPRESS by EDWARD S. KNAPP
42. CONFEDERATE PATRIOTIC COVERS by VanDYK MacBRIDE
43. POSTAL LEGISLATION OF THE CONFEDERATE STATES OF AMERICA by STANLEY B. ASHBROOK
44. THE MAIL OF THE A. E. F. by HENNER M. SANFORD
45. THE HISTORY OF THE R.A.F. POSTAL SERVICE OVERSEAS, 1942-1957 by JOHN A. SMITH
46. POSTAL HISTORY CATALOGUE OF NEW ZEALAND by L. J. G. FRANKS
47. BRITISH ARMY FIELD POST OFFICES 1939-1950 by COL. G. R. CROUCH & NORMAN HILL
48. LOCATIONS & ASSIGNMENTS, U.S. ARMY POST OFFICES, WORLD WAR II, 2nd Edition by A. J. TRIPP
49. POSTAL AFFAIRS DURING THE GERMAN OCCUPATION OF THE CHANNEL ISLANDS 1940-45 by WILLIAM NEWPORT & JOHN SIMPSON
50. A CHECK LIST OF STREET RAILWAY POST OFFICES 1891-1929, brought up-to-date by ROBERT A. TRUAX.

THE SALES DEPARTMENT

The Sales Department of USCC is operated much the same as are those of other philatelic organizations.

We operate six different types of circuits:

1. 19th Century off cover only
2. 19th Century covers
3. 20th Century off cover only
4. 20th Century Covers
5. Foreign covers
6. Special Selections

Circuits consist of about 12 books of stamps or of about 20 of covers. Circuit groups are made up of from 6 to 15 members and are arranged geographically to reduce cost of transportation to a minimum. Each circuit is accompanied by a letter giving full instructions for handling and a list of members to whom it is to be sent as well as a list of the books of stamps or covers included. Each member, in turn, inspects it as promptly as possible, taking those items he wishes and signing for them in the space provided. He then fills out a report blank and mails it along with remittance for material taken to the sales manager, (The Dept. is run on a cash basis), and forwards the circuit to the next member on the list, using either express or parcels post. On the regular circuits members pay transportation to the next on the list only. On special selections members pay transportation both ways, from the sales manager to them and back again.

Members wishing to sell material through the Department may get from the sales manager, sales books for 120 stamps @ 10¢ each, cover envelopes for up to 20 covers @ 5 for 25¢ or cover books with 12 separate containers, to give better protection to valuable items, for 20¢ each. All are specially prepared and have printed instructions, as well as space for describing the contents. Any stamp or cover which has passed through the mails may be entered. All items must be priced net and where possible pertinent information should be given. Each book or sales envelope received by the Department will be assigned a number and the owner will be notified. All material in the sales department stock is fully covered by insurance while in the possession of any member or in transit between members. This applies wherever the member may live and it is not necessary to insure parcels post shipments after the material has once been entered in the stock.

In addition to the cost of the sales books and envelopes the Sales Department charges are as follows: 1-1/2% of original retail value for insurance (minimum charge on each sales book or envelope 25¢) and 15% of actual sales made for the Sales Manager's commission (Minimum charge for this too on each sales book or envelope 25¢). These two charges along with cost of returning remainders to owner will be deducted at the time of retirement. Sales books and Envelopes will be retired and settlement made when they have been all around or when they are too far depleted to send out again. The length of time required will vary somewhat depending on saleability of material and promptness of members in forwarding circuits. We try not to keep any sales book or envelope over 18 months but some do run over this.

Membership is granted through application passed upon by a Membership Committee. Dues are \$3.00 per year payable in advance. The year starts on January 1st. New members pay as follows:

Those accepted between Jan. 1 & April 30	\$3.00
" " " May 1 & Aug. 31	2.00
" " " Sept. 1 & Dec. 31	1.00

No admission fee is charged.