

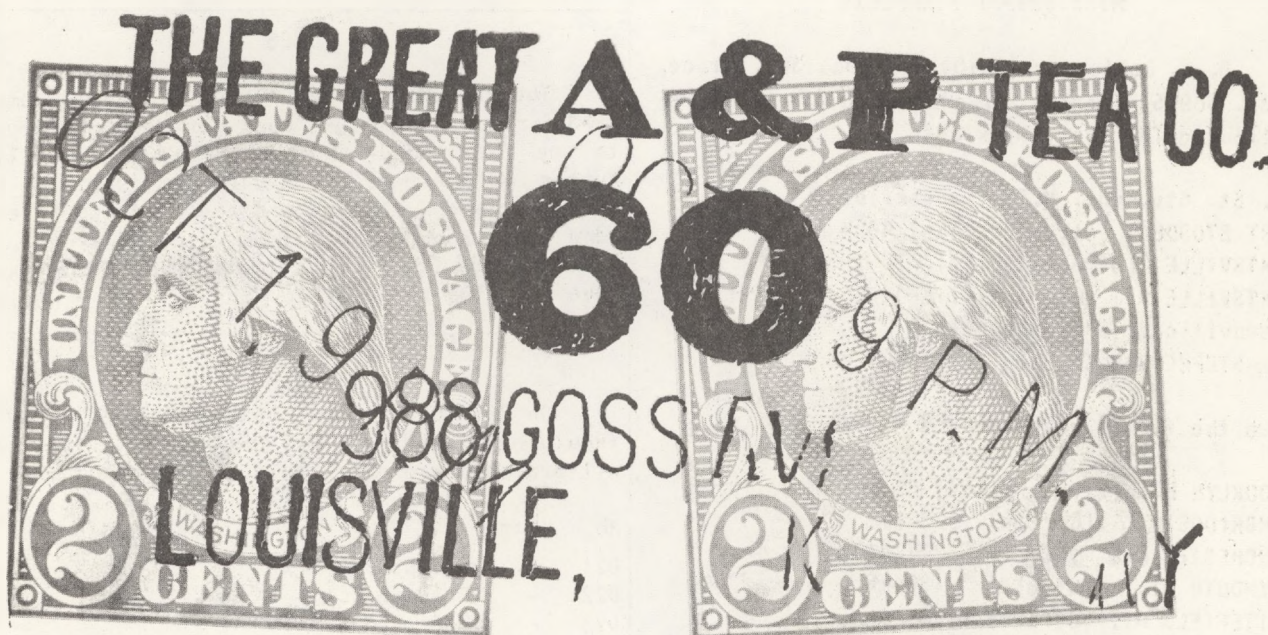


Cancellation Club **NEWS**

VOL. 9 - NO. 1 WHOLE NO. 92

JANUARY - 1968

20th CENTURY



PRIVATE CARRIER

SEE PAGE 2

THE U S CANCELLATION CLUB NEWS

Published six times a year, January, March, May, July, September and November by the US CANCELLATION CLUB and sent free to members.

Back numbers 25¢ each to members.

Subscription price to others. \$2.50 per yr.
50¢ per copy.

ADVERTISING RATES

Full page	\$15.00
Half page	8.00
Quarter page	4.50
Column inch	1.00
Adlets 2¢ per word, min.	50¢

Address communications to the Club Secretary
C. D. Root, 855 Cove Way, Denver, Colo. 80209

USA J1-28 ON COVER

One of our members wishes to secure these early Postage Dues on Cover. If you have such items which you can spare please prepare and send them in to the Sales Dept. We have had very few of them. Also some members are interested in the 19th Century Special Delivery and also the Registration Stamps on Cover. All would be welcome in the Sales Dept.

MISSISSIPPI STAMPLESS

B. C. Oakley Jr. (#510) P.O. Box 382, Bruce, Miss. 38915, wishes to secure covers with the following Territory Markings:

Ft. St. Stephens, M.T. (manuscript)
FORT STODDERT (straight line) 46x4 mm
HUNTSVILLE (straight line) 38 x 3½ mm
HUNTSVILLE M T (straight line) 35 x 2½ mm
Greenville M.T. (manuscript)
St. STEPHENS M T (Straightline) 46 x 3 mm

Also the following Statehood Markings:

BROOKLYN Mi. (straightline) 35 x 4 mm
CAMBRIDGE Mi. (Circle) 30 mm
MANCHESTER Mi. (Circle) 31 mm
PLYMOUTH Mi. (Circle) 30 mm
WHITEFIELD Mi. (Circle) 35 mm
WILLIAMSBURG MISS. (Circle) 30 mm

SLOGAN SLANTS

Moe Luff (#252) continues to publish SLOGAN SLANTS and METERS & COLLECTORS. The latest issues urge members to exhibit at "INTERPEX 1968". Anyone interested in Slogan Cancels or in Meters or Meter Strips should get in touch with Mr. Luff at 12 Greene Road, Spring Valley, N.Y. 10977.

20th CENTURY CANCELS

On the front page and also on Page 4 we show more drawings by Mrs. Carolyn Kuhn (#742). We hope some member can supply the information Mrs. Kuhn requests.

SEPAD

Members of USCC were prominent at this, the 28th National Stamp Exhibition of the ASSOCIATED STAMP CLUBS OF SOUTHEASTERN PENNSYLVANIA AND DELAWARE, Wylie H. Flack (#603) and Robert J. Stets (#482) were on the Board of Directors and the two of them were Chairmen of three Committees. Mr. Stets received the 1966 local award for "Outstanding Services to Philately".

Thomas E. Elnen (#578) received a Silver Medal and also the USCC Certificate for his exhibit of the U.S. 1869 Issue. Gilbert L. Peakes (#608) took home a Gold Medal for his exhibit of Plate Numbers on the Presidential Coils. Jean C. Smith (#630) got a Blue Ribbon for his "FRANCE", 19th Century Postal Markings on Stamps & Covers. Arthur H. Bond (#505) was awarded a Gold Medal for his showing of US Domestic Postage Rates, 19th Century. Robert J. Stets (#482) received a Trophy and the APS Medal for his "Postal History of Philadelphia". Wylie H. Flack (#603) received four awards, A Bronze Medal for "The World's First Commemorative Postage Stamp", a Bronze Medal and the L.S.P. Certificate for the "Lincoln Memorial Issue", a Green Ribbon for "The National Export Exposition" and a Section Trophy for "Philadelphia Hotel Covers".

DUES

The response to our request in the November NEWS for payment of 1968 dues has been gratifying to say the least. However, there are still a number of members whose dues for 1968 have not been received. If you are one of these, please send in your dues (\$4.00) now to the Treas., C. D. Root, 855 Cove Way, Denver, Colo. 80209 and save the Club the expense of sending out notices.

SHIELDS

On Page 5 we show another page of Shields from the collection of Mr. Roger B. Cotting (#664). All are numbered and are identified as follows:

No.	Year	Town	Color
D21	-	Pittsburgh, Pa.	Black
D22	-	Pascoag, R.I.	Black
D23	-	Elizabeth, N.J.	Black
D24	-	Norfolk, Va.	Black
D25	-	Toms River, N.J.	Black
D26	-	Macon, Ga.	Black
D27	-	West Gloucester, Mass.	Black
D28	-	Yazoo City, Miss.	Black
D29	-	Port Plain, N.Y.	Black
D30	-	Pittsburgh, Pa.	Black
D31	-	Newark, --	Blue
D32	-	Dayton, O.	Black
D33	-	New York, N.Y.	Black
D34	-	Albany, N.Y.	Black
D35	-	Pittsfield, Mass.	Black
D36	1864	Topsham, Vt.	Black
D37	-	Boston, Mass.	Black
D38	1867	Pittsburgh, Pa.	Black
D39	-	-	Black
D40	-	Boston, Mass. (Similar to D23)	Black

OLD U.S. COVERS ARE MY SPECIALTY!

Write for my FREE special lists. Approvals gladly sent to U.S.C.C. members on request.

The New American Stampless Cover Catalog
Paper Bound, Post Paid..... \$5.00
Hard Cover, Post Paid..... \$7.00

E. N. SAMPSON
ADDRESS . . .
Box 592, Bath, N.Y., 14810

FANCY CANCELS ON 19th CENTURY U.S.

Collector's Corner

P. O. Box 26
TANNERSVILLE, N. Y. 12485

CANCELLATIONS -- COVERS

TOPICAL SEALS (NON SCOTT)
TRAINS, SPORTS, SHIPS, RED CROSS,
CHARITIES, RELIGION, ROCKETS, etc.

APPROVALS A. S. D. A.
189 W. Madison OTOKAR CERNY Chicago, Ill. 60602

WANT LISTS SOLICITED U.S. - CANCELS - COVERS

W. C. WALKER
102 ELIZABETH ST.
CLEARFIELD, PA. 16830

UNITED STATES POSTAL SLOGAN CATALOG

Lists all known slogan cancels through 1962 for U. S. and Possessions.

Over 1400 illustrations, alphabetically arranged, Where and When Used, Type of Cancel, How & What to Collect, Cancel Machine Identity Chart, Commemorative Cancels, U.S. Used Abroad, Slogan Errors, Revised Type Chart for World's Panama-Pacific Exposition, Slogan Type Special Service Markings, plus all elaborate 85-Subject Check List. Current Market Prices.

\$4.00 Postpaid

MOE LUFF 12 GREENE ROAD
SPRING VALLEY, N.Y. 10977

REINSTATED

357 W. R. DeKay Jr., 4417 Lincoln Road,
Louisville, Ky. 4025-19th Century Covers.

CHANGES OF ADDRESS

- 578 Thomas E. Elnen to 6618 Glenwood Ave.,
Chicago, Ill. 60626 from Wichita, Kans.
641 Robert L. Markovits to Box 744, Wall St.
Sta., New York, N.Y. 10005 from Box 3337,
Grand Central Sta.
685 Clark H. Stevens to 1617 Golf View Drive,
Belleair, Clearwater, Fla. 33516 from
Birmingham, Mich.
696 Stephen M. Sims to 3704 Wilson Way,
Anchorage, Alaska 99503 from La Jolla,
Calif.

DECEASED

107 Dr. W. R. McAdams
202 Carlos E. Seaver

RESIGNED

399 Milton L. Greenebaum
498 Russell R. Nickel
593 Joseph Bernhardt
642 Lawrence M. Ricks
656 E. Irving Wines
689 James E. Collins
706 Leroy L. Ross

NEW MEMBERS

- 767 Wm. C. Alchele, 203 4th St., Hollister,
Calif. 95023-Colorado Covers; Temperance
Covers; Liquor Corner Cards; U. S. Rev-
enues postally used on Cover.
768 John P. Rigney, 61 Kimball Ave., Yonkers,
N.Y. 10704-RPOs, Carriers, "Return to
Sender" with Pointing Hand, etc. (Bond)
769 John S. Cross, 1910 Campus St., Cedar
Falls, Iowa 50613-Fancy Cancels & Var-
ieties on 3¢ Green & on USA 2¢ Reds;
General Fancy Cancels. (Horwitz)
770 Al Zimmerman, 843 Van Nest Ave., Bronx,
N.Y. 10462-County & Postmaster Cancels;
Straight Line Cancels, 19th Century;
Fancy Cancels on #65, all on cover;
Dealer. (Markovits)
771 Dennis R. Burk, 380 Center St., West
Haven, Conn. 06516- USA Adhesives, Po-
sition Blocks, Plate # Blocks, Singles,
Booklet Panes, Covers. (Horwitz)
772 Mrs. S. C. Nicholson, 18 Pinfold Road,
Solihull, Warwickshire, England-19th
Century USA Stamps, Covers, Postmarks.
773 Ira L. Moss, 165 Beach 146 St., Neponsit,
N.Y. 11694-USA; Cancellations; Stampless
Covers; UN; General (Horwitz)

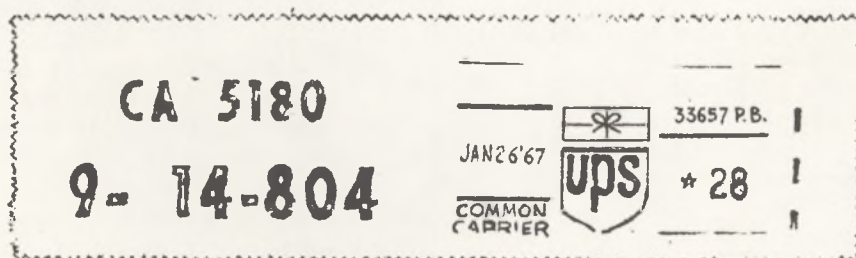
Your Secretary and Mrs. Root wish to thank all
members who so kindly sent Holiday greetings.

20th CENTURY

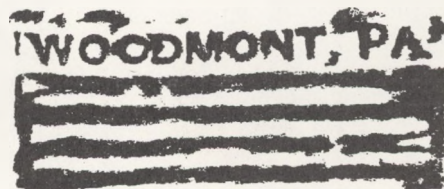
Large companies and chain stores often send letters to and from their branch offices by way of their own transportation. In so doing it is necessary to comply with Section 20 of "Restrictions on Transportation of Letters", Fourth Edition, a booklet published by the Post Office Department. This section deals with the carrying of letters outside the mails and, in brief, requires the use of postage stamps or meters displaying the correct rate for First Class letters. Stamps must be cancelled and the name of the sender is to be placed on the envelope accompanied by the date of mailing.

Even though mail of this nature is carried outside regular channels, it seems reasonable to include these markings among collectable 20th Century since postal regulations govern such dispatch. In addition to the Atlantic & Pacific Tea Company (Cover illustration) two other companies that have taken advantage of this method of transporting mail are Libby, McNeil and Libby, and Pacific Gas & Electric. No doubt there are many others. A showing of these cancellations would be a worthwhile and intensely interesting record of this category.

A similar service is that of the Common Carrier, for example the Greyhound Bus Lines and, in California, the United Parcel Service (illustration this page). Many manuscript cancels have as their source letters carried outside the mails.



Will someone familiar with flag cancellations give an opinion on this? Handmade or from a broken or faulty machine die?



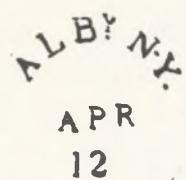
Probably a Parcel Post handstamp. Can anyone supply more information?

Carolyn P. Kuhn

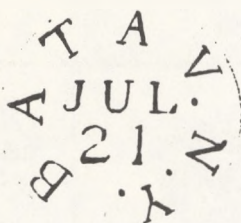
SHIELDS



SEE PAGE 2



ALBANY, N.Y.
1805



BATAVIA, N.Y.
c1830



CANANDAIGUA, N.Y.
c1830



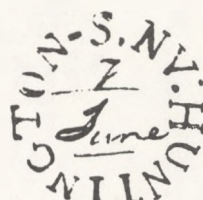
CANANDAIGUA, N.Y.
1831



CAZENOVIA, N.Y.
1842



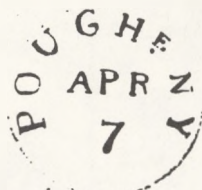
GENEVA, N.Y.
c1840



HUNTINGTON-S, N.Y.
1808 (R)



JAMESTOWN, N.Y.
1836



POUGHKEEPSIE, N.Y.
c1825



SAG HARBOR, N.Y.
1816-31



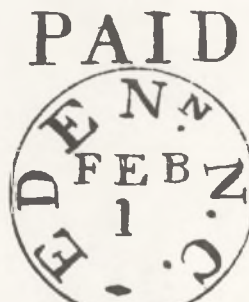
SCHENECTADY, N.Y.
1834



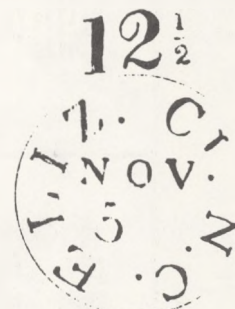
ASHEVILLE, N.C.
1841



FAYETTEVILLE, N.C.
c1830



EDENTON, N.C.
1834



ELIZABETH CITY, N.C.
c1835 (GREEN)

MORE ABBREVIATED POSTMARKS FROM THE
COLLECTION OF MR. ARTHUR H. BOND (#505)

COLLECTORS' CORNER (ASDA)

BOX 26

Tannersville, N.Y. 12485

Telephone: Person to person to Cy Horwitz (518) 589-5727 or 589-5358

The following 66 lots are all pictured. Descriptions are therefore kept to a minimum as most information is obtainable thru the photos. Creases, thins, and other defects, not easily spotted in pictures, are mentioned. If there is no mention you can assume they don't exist. Everything sold with a COMPLETE GUARANTEE OF SATISFACTION but returns MUST be made within 3 days of receipt. CASH WITH ORDER unless credit previously established. SECONDARY CHOICES APPRECIATED. Be sure and use lot numbers.

Lot No.Description & Price

- | | | | |
|-------|------|--|-------------------|
| 1201. | #7 | - "1857" year plus nice "PAID" cancels. | \$16.50 |
| 1202. | #9 | - variety - Lovely ex. of hor. STITCH WATERMARK. VF stamp. | \$20.00 |
| 1203. | #10 | - Bullseye "PAID" of Boston, Mass. on VF stamp. | \$6.00. |
| 1204. | #11 | - UNUSED - no gum VF margin copy showing imprint. 3-1/2 margins. | \$8.00. |
| 1205. | #26 | - WELLS FARGO EXP. CO. cancel in blue. Fine stamp. | \$9.50. |
| 1206. | #17 | - THREE STRIKES of red "PAID" - SMALL thin. | \$25.00. |
| 1207. | #26 | - "FREE" in blue. Fine strike on fine stamp. | \$8.50. |
| 1208. | #35 | - Lovely, bullseye strike of rare type star. Fine stamp. | \$22.50 |
| 1209. | #63 | - UNUSED, no gum in ULTRAMARINE. Cat. | \$22.50. \$10.00. |
| 1210. | #63b | - UNUSED, nice appearing copy. SMALL thin, minor stain. Dot in U. | \$8.50. |
| 1211. | #63b | - UNUSED, dark blue, no gum, GUTTERSNIPE. Lovely stamp. | \$15.00. |
| 1212. | #63 | - "Socked on the nose" rosette. Some short perfs. | \$4.00. |
| 1213. | #63 | - Beautiful strike of large block "L" - stamp with small crease, short perf. | \$7.50. |
| 1214. | #63. | - Circled "10" on fine stamp but for missing perfs. | \$7.50. |
| 1215. | #63 | - "1861" year date - fine stamp. Cat. | \$10.00. \$5.00. |
| 1216. | #63 | - "(PAI)D ALL" - VG stamp. Cat. | \$20.00. \$8.50. |
| 1217. | #64 | - SUPERB PINK on small piece. Blue PM. Cat. | \$80.00. \$65.00. |
| 1218. | #65 | - Lovely pair with blue "WELLS FARGO" EXP. CO. cancel. Fine+ stamps. | \$18.50. |
| 1219. | #65 | - Very fine strike of West Meriden, Ct. Devil & Pitchfork. H.S.1567. | \$25.00. |
| 1220. | #65 | - Excellent strike of ball-type SHIELD. Cpl. short perfs. | \$15.00. |
| 1221. | #65 | - Superb, bullseye strike of rare SHIELD IN HEART. G stamp, 1 short perf. | \$27.50. |
| 1222. | #65 | - Fine strike of Dedham, Mass. "PAID" in unusual circle. HS #1830. Fine stamp. | \$13.50. |
| 1223. | #65 | - Superb strike of fancy VEINED LEAF. 1 pulled perf. | \$6.50. |
| 1224. | #65 | - Beautiful, superb strike of "LS" in HEART of Lima, Ohio. In blue. Stamp with perf. faults. | \$33.50. |
| 1225. | #65 | - VF+ strike of rare Lynchburg, Va. MAN WITH HAT. (HS #1496), on small piece. SMALL faults. | \$22.50. |
| 1226. | #65 | - Very fine strike of Albany, N.Y. star-framed "US" (HS #1261). VG stamp. | \$12.50. |
| 1227. | #65 | - Excellent strike of rare TERRESTRIAL GLOBE. Fine stamp. | \$57.50. |
| 1228. | #65 | - Cambridge, Mass. EAGLE on small piece. Cpl. short perfs. | \$12.50. |
| 1229. | #65 | - Superb strike of Madalin, N.Y. STAR IN SHIELD on VF stamp. GEM QUALITY. | \$70.00. |
| 1230. | #65 | - Superb strike of uncommon SHIELD on fine stamp. | \$35.00. |
| 1231. | #65 | - Fine strike of scarce star-framed "US" of Albany, N.Y. | \$17.50. |
| 1232. | #65 | - Very fine strike of four BLUE HEARTS in circle. VG stamp. | \$5.00. |

<u>Lot No.</u>	<u>Description & Price</u>
1233. #65	- Very fine, bullseye strike of Boston, Mass. Anchor on superb stamp. \$20.00.
1234. #65	- VF stamp with 1/3 row of excess perfs. Nice town cancel. \$5.00.
1235. #65	- VF strike of numerals "10" on F stamp. \$5.00.
1236. #65	- Fine stamp with straight line RAILROAD and date cancel. \$6.00.
1237. #65	- VF strike of Norwalk, Conn. "US" IN SHIELD. HS #1238. Fine Stamp. \$8.50.
1238. #65	- Beautiful strike of NEGATIVE CROSS on VF+ stamp. \$12.50
1239. #65	- Striking pair with NYC circled star. Lovely item. \$4.00.
1240. #65	- VF strike of scarce clerks' designation No. cancel, Neg. "XIX" - VG stamp. \$7.50.
1241. #71	- Beautiful bullseye strike of large star. Fine stamp. \$13.50.
1242. #76	- Nice leaf strike on VG stamp. \$9.50.
1243. #78	- VF strike of intaglio star plus red town PM. VG stamp. \$15.00.
1244. #78b	- Nice strike of unusual "star-like" cancel on fine stamp. \$7.50.
1245. #88	- VF, full strike of Corry, Pa. EAGLE. VG stamp. \$25.00.
1246. #88	- VF strike of circled 6 ptd. star. Fine stamp. \$8.50.
1247. #94	- Superb strike of Quincy, Mass. Masonic with "G" in center. slipped perfs. \$12.50.
1248. #94	- Nice RAILROAD cancel on stamp with few blunted perfs. \$7.50
1249. #94	- Beautiful bullseye strike of HEART IN SHIELD. VG stamp. \$21.50.
1250. #94	- VF strike of rare Hartford, Conn. PUMPKIN. Sound stamp. \$35.00.
1251. #94	- UNUSUAL ITEM! Rare ROMANS' HEAD of NYC (superb strike), plus FREAK PERFS, NY PM in background. Huge margins. \$37.50.
1252. #97	- Brilliant RED cancel on fine stamp but for 2 short perfs. Cat. \$15.00. \$6.50.
1253. #112	- UNUSED - OG, almost PERFECT centering. Has MINUTE hinge thin, hardly distinguishable. Cat. \$42.50. \$25.00.
1254. #113	- UNUSED - OG - nice color - very fresh looking. Cat. \$23.50. \$13.50.
1255. #114	- UNUSED - NG - nice color and fresh looking. Cat. \$12.50. \$5.00.
1256. #116	- Very fine "rosette type" cancel. VF+ stamp but for 1 pulled perf. \$9.00
1257. #117	- Fine, used copy with nice light cancel. Perfs all clear, 1 snubbed perf. Cat. \$16.00. \$6.75.
1258. #154	- Good used copy with nice crossroads cancel. Scott \$18.50. \$7.00.
1259. #161	- Nice "STEAMSHIP" cancel. Small perf. faults. \$3.00.
1260. #135	- BEAUTIFUL strike of MAPLE LEAF. Has split grill. Would be in the "GEM" classification but for 2mm. tear, hardly noticeable. \$8.00.
1261. #147	- Superb, full strike of rare type MASONIC. VG stamp. \$13.50.
1262. #148	- Variety - Fine+ stamp (1 short perf) with vertical STITCH WATERMARK. Nice crossroads cancel. \$7.50.
1263. #153	- Very good stamp, bright color, red crossroads cancel. Cat. \$14.00. \$6.00.
1264. #232	- SUPERB, NG, unused copy. Virtual perfect centering. \$5.00.
1265. #236	- Fine, UNUSED stamp, OG, perfs close on top. \$4.00.
1266. #237	- Very fine appearing UNUSED stamp with OG. Lovely color but has small hinge thin near center. Cat. \$14.00. \$4.50.

END OF PICTURED LOTS

INCLUDE 50¢ ADDITIONAL FOR ALL ORDERS UNDER \$5.00.

OFFERED TO MEMBERS OF THE USCC ONLY!!

There follows 24 lots of groups of specific issues. Our first such offering, at a substantial discount off retail, was very successful. 18 of 24 lots have been sold thru the ad, as of this moment. With this issue we are making an important change. The first set of lots were made up of approximately 50% "good" items and 50% fairly common items such as stars, etc. From now on the lots will be smaller in size (in number of stamps in each) but will include almost nothing from the "very common" category. Most specific items will be listed but not all as space will not allow it. In cases where minor defects exist in a lot these defects are reflected in the prices. ALL SOLD WITH A COMPLETE GUARANTEE OF SATISFACTION. Just return within 3 days of receipt. SECONDARY CHOICES APPRECIATED. Please use COMPLETE lot numbers.

- 1267CC. #26(10) - various "PAIDS", unusual "PAID 3" in gridded circle, blue "HELD3", line thru neck variety, "FREE", stitch watermark, outline star. Regular price: \$28.75. Net: \$23.95.
- 1268CC. #65(10) - circled parallel bars, circled "US", Putnam, Mass. boxed "US", unusual small basket grid, "20", blue circled "10", circled "1", NYC star, shield, intaglio star. Regular price: \$18.75. Net: \$16.00.
- 1269CC. #65(9) - Blue square "lozenge", lovely blue star with dot in center, bullseye circled blue maltese cross, blue propeller, blue star in negative of Mitteneague, Mass. with negative "UNION" around it. (superb strike but stamp with large repair). Grid of Battle Creek, San Fran. cogwheel, cross in circle of Petersburg, Va. Regular price: \$25.50. Net: \$22.00.
- 1270CC. #65(10) - Boston Wagon Wheel, pinwheel, circled shield, circled "5", 3 leaf clover, "X" in circle of Harrison Sq., Ms., "USM" of Rutland, Vt., nice geometrics. Regular price: \$29.50. Net: \$24.50.
- 1271CC. #64b,65,94(10) - neg. star, lg. outline star, Wells Fargo (light), "Steamboat", Macon, Ga. Shield, lovely cross, geometric, "UMS". Regular price: \$14.50. Net: \$11.00.
- 1272CC. #65,88,94(10) - "Short Paid" on paid, neg. "X", Masonic, "3", "Wells Fargo" on paid (light), leaf, oak leaf, blue "h". Regular price: \$18.25. Net: \$14.50.
- 1273CC. #73(3),#93(7) - red carrier, red towns, bullseye, geometric, circle of wedges, colored cancels. Regular price: \$25.50. Net: \$18.50.
- 1274CC. 1¢ Banknotes (10) - blue railroad, "8", rare type patent, Glen Allen Star (beautiful strike but small piece out of one corner), orange transit, lattice, neg. blue "H", bullseye "Buffalo, N.Y." Regular price: \$19.50. Net: \$16.50.
- 1275CC. 1¢ Banknotes (10) - large registration "R", circled "US Mail", Glastonbury "G" pre-cancel (stamp clipped on 2 sides), shield, carrier, "5", Glen Allen Star precancel (lovely strike on sound, off center stamp), railroad, unusual small "g". Regular price: \$22.75. Net: \$18.50.
- 1276CC. 3¢ Greens (9) - St. Louis Checkerboards, circled "FREE", red circ. of Sharon Springs, N.Y., Richfield Springs, N.Y. neg. "EAH", lovely neg. "73" in scalloped circle, boxed "E" on piece, showing eastbound train. Regular price: \$23.75. Net: \$19.50.
- 1277CC. 3¢ Greens (10) - Danbury hat, 2 skull & crossbones plus another in negative, huge guttersnipe, unusual circulars. Regular price: \$15.00. Net: \$12.50.
- 1278CC. 3¢ Greens (10) - lovely circ. segmented star, star in grid, boxed "&", Quincy, Ill. "S" in circle, blue branch, rare Eagle in Shield (light strike), circled "10", shield, pair of large, different, circled "10"s. Regular price: \$22.75. Net: \$18.50.
- 1279CC. 3¢ Greens - boxed blue Chicago "M", railroad, "FH", small anchor in cogwheel in blue, small boot, "HP", Waterbury leaf, NYC red supplementary. Regular price: \$24.00. Net: \$19.50.
- 1280CC. 3¢ Greens (10) - neg. "JP" on guttersnipe, unusual "W", pr. "RPO" on piece, "OK" in circle, "78", neg. Masonic, Checkerboard, neg. cross, postal clerks' designation no. Regular price: \$24.50. Net: \$19.50.

- 1281CC. 3¢ Greens (9) - rare Duck, N.Y.C. Bow, circled "2" on pair, neg. hat on ribbed paper, RPO on small piece, orange cancel. Regular price: \$22.25. Net: \$18.50.
- 1282CC. 3¢ Greens (10) - masonic, light Naperville, Ill. Head of Liberty, clerks' designation no., "G", open hand, light strike of RARE Campello, Mass. ELEPHANT, HS 1463, blue flower, St. Louis Sun Face, larke "OK", animals head. Regular price: \$42.00. Net: \$33.50.
- 1283CC. 3¢ Greens (8) - pair with circled "US" on New Mexico territorial piece, St. Louis, Sunface, crescent, OUTLINE MOUSE, Waterbury leaf, unusual neg. "monkey face", circled "10". Regular price: \$35.75. Net: \$29.50.
- 1284CC. 6¢ Banknotes (10) - stitch watermark, "24", Thomaston, Ma. Shield, 10 line circled grid, lovely geometric, part imprint. Regular price: \$36.75. Net: \$29.50.
- 1285CC. 179, 185 (10) - NYFM, red town, supplementary, New Orleans foreign mails, maltese cross. Regular price: \$17.75. Net: \$13.50.
- 1286CC. 179, 185 (10) - large "G", blue flower, NYFM, red town, supplementary, "E", leaf, colored cancels. Regular price: \$19.75. Net: \$15.00.
- 1287CC. 163(1), 187(4), 189(7) - neg. "4", neg. "H", lovely circular grid, outline star, neg. "H", nice geometrics, circled star, supplementaries. Regular price: \$30.30. Net: \$20.00.
- 1288CC. #210(10) - Stoneham, Mass. 1885 in Cross, "W" in 4 circles, large circled star, mask, Mystic Bridge "MB", neg. cross, neg. "AA", masonic star and crescent, crescent. Regular price: \$15.75. Net: \$12.50.
- 1289CC. 2¢ Columbians(8) - large "S", circled "10", face, large star on "broken hat", copy with DOUBLE break in hat, circled star, neg. "N", neg. "H". Regular price: \$9.00. Net: \$7.00.
- 1290CC. Early Postage Dues(7) - NYC "pearls" precancel on 3 diff. values, circled cross, "DUE", "DUE 2" in purple, "10". Regular price: \$14.25. Net: \$11.25.

NEW YORK STATE RESIDENTS PLEASE INCLUDE THE 2% SALES TAX. INCLUDE 50¢ FOR ALL ORDERS UNDER \$5.00 TO COVER COST OF HANDLING. SECONDARY CHOICES APPRECIATED.

We plan to continue advertising (to USCC members) small lots similar to those of 1267CC-1290CC. The question of "what to do with the excess" has been brought to our attention. This is pretty much a normal problem when buying lots, whether large or small. In an attempt to ease this situation (the increase in quality of the lots should lessen the problems) we have come up with the following.

If you desire AT LEAST ONE HALF the total items in any lot, then they can be purchased for the FULL MARKED SELLING PRICE under each item on the cards. This may not result in the discount one hopes for but, in some cases, it might prove practical.

CHANGE IN "SUBSCRIPTION" RATES. For collectors wishing to receive our 6 bi-monthly mailers, plus 3-6 supplemental mailings, the following new prices supercedes all those previously given. Per year they will now be: \$3.00, first class mailing; \$5.00 via domestic airmail and \$8.50 for overseas airmail. When, and if purchases reach total of \$75.00 for the year, what ever fee was paid will be refunded in credit or cash, whichever preferred. Those whose 1967 purchases reached this figure will receive mailings of 1968 automatically.

Collector's Corner

P.O. Box 28

ASDA

Tannersville, N.Y. 12485