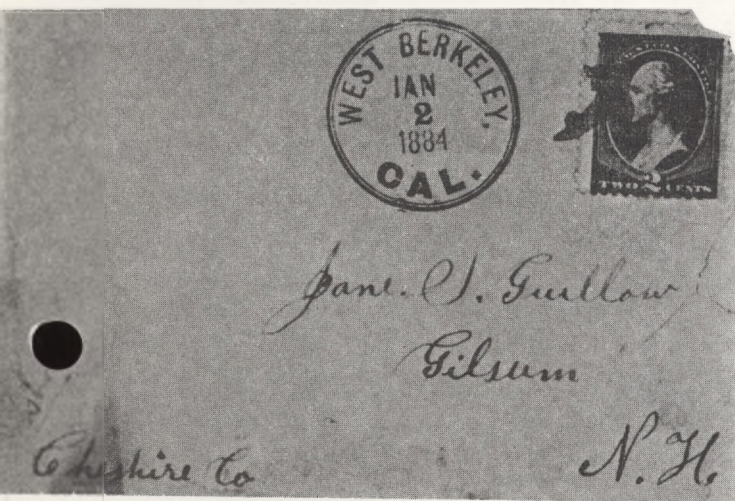




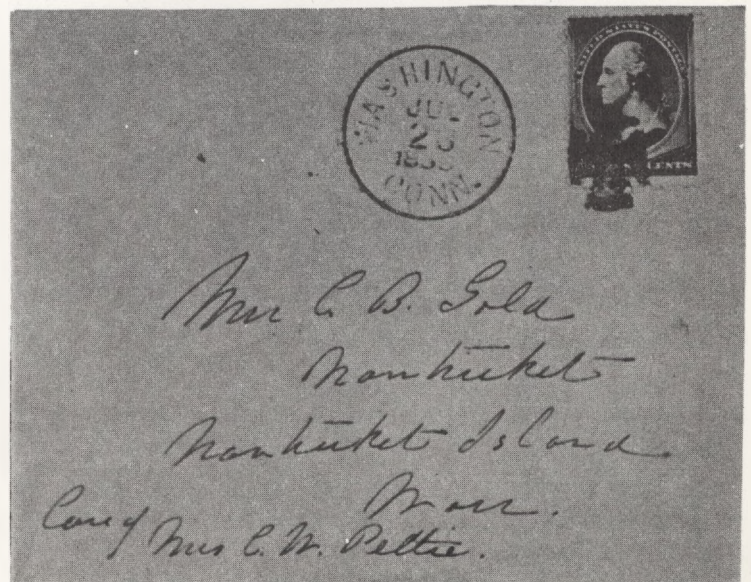
# Cancellation Club NEWS

VOL. 9 - NO. 7 WHOLE NO. 98

JANUARY - 1969



SEE PAGE 54





## THE U S CANCELLATION CLUB NEWS

Published six times a year, January, March, May, July, September and November by the US CANCELLATION CLUB and sent free to members.

Back numbers 25¢ each to members.

Subscription price to others: \$2.50 per yr.  
50¢ per copy.

## ADVERTISING RATES

Full page . . . . .	\$15.00
Half page . . . . .	8.00
Quarter page . . . . .	4.50
Column inch . . . . .	1.00
Adlets 2¢ per word, min.	50¢

Address communications to the Club Secretary,  
C. D. Root, 855 Cove Way, Denver, Colo. 80209.

## NEW BOOKS

Edward L. Willard (#125) is the author of a two volume work on the 2¢ Brown Stamp (Scott #210) which will be published by Lindquist Publications very soon. In fact, it may have been announced by the time this reaches you. The second volume is devoted entirely to Cancellations having at least 1500 illustrations. Although we have not been told what the price will be we are sure Lindquist would be willing to accept orders for this book.

## FRONT PAGE

These two Covers were secured by Mr. Willard when he bought the Arthur Hall Collection but came too late to be included in the illustrations in his new books. Although they are not unknown, the cancellations on these two covers are very rare, particularly so on cover with such excellent strikes.

## RAILROAD MARKINGS ON #210

Since about 100 more pages would have been required for a reasonably complete listing of these markings Mr. Willard has not included them in his book, but he has a vast number of them on Cover. On page 57 we show some tracings from his Covers. Particularly we wish to call your attention to the "Morrison North O.K.". We believe this is the first time this Cancellation has been illustrated completely. Other illustrations have been taken from a stamp off cover but this Cover shows the complete strike. We expect to use more of these tracings from time to time.

## DUES

(PLEASE READ AND ACT)

THE RESPONSE TO OUR REQUEST FOR DUES WHICH APPEARED IN THE NOVEMBER NEWS HAS BEEN MOST GRATIFYING, BUT THERE STILL ARE QUITE A NUMBER OF MEMBERS WHOSE DUES FOR 1969 HAVE NOT BEEN RECEIVED. PLEASE SEND IN YOUR \$4.00 NOW TO THE SECRETARY, C.D. ROOT, 855 COVE WAY, DENVER, COLO. 80209 AND SAVE THE CLUB THE EXPENSE OF A NOTICE. THOSE OF YOU WHO HAVE CREDIT WITH THE SALES DEPT. WILL RECEIVE YOUR CARDS SHORTLY, DUES BEING CHARGED TO YOUR ACCOUNT WITH THE SALES DEPT. THE MARCH NEWS WILL BE SENT ONLY TO THOSE MEMBERS WHOSE 1969 DUES HAVE BEEN PAID.

## FILATELIC FIESTA 1969

Since the closing date for entries is Jan. 25 there is very little time but, if you should care to accept the invitation to compete in this Exhibition, get in touch right away with Theodore O. Mills, 1058 Las Palmas Drive, San Jose, Calif. 95051.

Clark Stevens (#685) received a Gold Award at FLOREX in Clearwater, Fla. late in October for his exhibit on "EVOLUTION OF AIR LETTERS".

As we suspected might be the case two members listed in the November NEWS as "Dropped" should have been listed as "Deceased", Robert S. Phillips (#302) and Joseph A. Romito (#610). We regret that we do not always receive such information.

Cancel #7 on Page 48 of the November NEWS is from Boston, Mass. and was used on Postage Due Stamps #s J20-28 and perhaps on a few of the Bureau issues. It sometimes resembles a Precancel but is not. This from Warren R. Bower (#751) who has them on Covers.

Cancel #2 on Page 51 of the November News is from Clayton, N.Y. and was used during the 1860s. This from J. Hoxie Haas (#648) who has it both on and off Cover. Also it is quite similar to one used at Clayton during the 1850s, see Plate 15, Page 63 in the Tracy-Simpson Book.

## SALES DEPARTMENT

It appears that members must be reminded continually of a few necessary regulations. First, all mail shipments must be insured as directed on the letter of instructions and, since it is the only record in existence of the shipment, the receipt must be retained until the shipment has reached its destination. Since two weeks or more often pass before delivery and it devolves on a third party, namely your sales manager, to determine whether or not delivery has been made, it would seem wise to retain these receipts at least 60 or 90 days. If a circuit is lost in the mail and no Insurance Receipt can be produced, the Post Office Department will assume no responsibility and neither will our Insurance Co. In that case all we can do is look for settlement to the member who shipped the lost circuit. Please make sure you are not caught in this predicament.

Also please refresh your memory each time by reading the instructions at the top of the letter and be sure to comply with all of them. Notify the Sales Manager when you ship, whether or not purchases are made. This is his only way of keeping track of the circuit.

As always the Dept. can use fine material in all categories.

OLD US COVERS  
ARE MY SPECIALTY

Write for my FREE special lists, Approvals  
gladly sent to U.S.C.C. members on request.

The New American Stampless Cover Catalog  
Paper Bound, Post Paid . . . . . \$5.00

E. N. SAMPSON  
ADDRESS ... Box 592, Bath N.Y., 14810

CANCELLATIONS --- COVERS  
TOPICAL SEALS (NON SCOTT)  
TRAINS, SPORTS, SHIPS, RED CROSS,  
CHARITIES, RELIGION, ROCKETS, etc.

APPROVALS OTOKAR CERNY A.S.D.A.  
189 W. MADISON CHICAGO, ILL. 60602

UNITED STATES POSTAL SLOGAN CANCEL CATALOG  
- 1968 Edition -

COMPLETELY REVISED with hundreds of price increases!  
128 pages, plus covers, 5½x8½, plastic comb binding.  
COMPLETE alphabetical listing of over 2500 known US  
Postal Slogan Cancels, 1897 thru Dec. 1967; U.S. Phil-  
ippine Islands (1908-45); Canal Zone; Commemorative  
Cancels; U.S. Used Abroad; profusely illustrated.  
WHERE USED; WHEN USED; TYPE of CANCEL; HOW &  
WHAT TO COLLECT; MACHINE IDENTITY CHART; 2  
WORLD'S PANAMA PACIFIC EXPOSITION Type Charts;  
85-Subject TOPICAL CHECK LIST; CURRENT MARKET  
VALUES for all. ALL FLAG Slogans, Expositions, and  
World's Fair Slogans are listed and priced.

\$4.25 postpaid

MOE LUFF

12 Greene Road, Spring Valley, N.Y. 10977 USA

U. S. COVERS

I STOCK ALL AREAS, ISSUES, USAGES,  
CANCELS EXCEPT MODERN FDC. WHAT  
WOULD YOU LIKE TO SEE? SELECTIONS  
SENT ON APPROVAL TO USCC MEMBERS  
ON REQUEST.

HENRY M. SPELMAN III

P. O. Box 488

LEXINGTON, MASS. 02173



HERST-SAMPSON, 19th CENTURY US FANCY CANCELS  
Out of Print \$17.00

20th CENTURY U. S. FANCY CANCELLATIONS  
CATALOGUE and PRICING GUIDE  
\$12.95

ROBERT L. MARKOVITS  
P.O. BOX 744 -- WALL ST. STA.  
NEW YORK, N.Y. 10005

W - A - N - T - E - D

"PAID" Cancels on #65

Both on & off cover

also hitherto unpublished information on them

Material on US series of 1869!!  
(Especially 114)

Covers, Cancels, Varieties, Freaks, etc.  
Also early US philatelic literature,  
magazines, papers, etc.

CY HORWITZ (#661)

Box 26, Tannersville, N.Y. 12485

WANT LISTS SOLICITED  
U. S. - CANCELS - COVERS

W. C. WALKER  
102 ELIZABETH ST.  
CLEARFIELD, PA. 16830

Wanted, Fancy Cancels on 19th  
Century U.S., off cover.  
Exchanges Invited!

MELVIN BENDER  
P.O. Box 289 -- Miami, Fla. 33101

WANTED: 1876 Centennial Stamped Envelope with Centennial  
Philadelphia, Pa. Postmark, typewritten Address and Letter.  
Also non-philatelic items, books, pictures, Stereos and all  
types of souvenirs including pressed glass.

WARREN TINGLEY (#471)  
789 Mitchell Ave. Elmhurst, Ill. 60126

NEW MEMBERS

- 806 Larry Resnick, 1720 SW 84th Ave., Miami Fla. 33155  
-Cancellations of the World with emphasis on Flor-  
ida, India, B.W.I.; all 19th Century USA Cancels.  
(Laurence)
- 807 Bill P. Modjeski, 2822 Fairhill Drive, Jackson,  
Miss. 39212- U.S. Cancellations; Confederates; USA  
Specialized, Perfs., Wmks. Commems. (Garrett)
- 808 Roy C. Whitelaw, P.O. Box 9, Santa Paula, Calif.  
93060- USA Cancellations, etc.; Boania, Austria,  
Switzerland. (Kesterson)
- 809 Frank A. Shonaker, 3105 Third Ave., San Diego,  
Calif. 92103-USA & UN Specialize; 19th Cent., Mint  
Stamps; All Types 19th Century Covers including  
early First Days, Wells Fargo etc., Confederate  
Covers; Early Plate Blocks.

CHANGES OF ADDRESS

- 458 Leslie Lawitz to 126 LaRue St., Park Forest, Ill.  
60466 from Chicago
- 468 Melvin W. Jackson to P.O. Box 1891, Idaho Falls,  
Ida. 83401 from Box 2085
- 485 James Willard Milgram MD to B-5615 Sinclair Lane,  
Baltimore, Md. 21206 from 550 N. Broadway
- 643 J. Leonard Diamond to 407 Lincoln Road, Miami Beach,  
Fla. 33139 from 1405 Stillwater Drive.
- 671 Kenneth R. Laurence to 13005 Keystone Terrace,  
North Miami, Fla. 33161 from 980 NE 132nd St.

RESIGNED

60 Edwin E. Puls.  
263 Arthur B. Jackson  
314 Wilma D. Stone



U.S. MACHINE CANCELLATIONS  
by Arthur H. Bond (#505)

The rapid growth of the Flag Cancel Society since its journal "Flag Cancellations" was started in 1963 indicates that great interest will develop in other types of machine cancellations when information is readily available for identification and classification. The prime mover in this instance was the remarkable "Flag Cancel Encyclopedia", published in 1955 by Frederick Langford, and in 1965 expanded in a revised edition. With an interesting historical review, this establishes an easily understood classification and contains a geographical listing of all known post offices using the "flag" machines, together with separate listing of exposition, military, street-car R.P.O., etc. applications. Mr. Langford has recently published another book, dealing with the cancellations produced by the Doremus machines in very complete form.

Many State organizations are now devoting considerable attention to postal history of their areas and several fine journals are being published by State groups. Machine cancellations of several varieties, readily available on cover to hundreds of collectors, will become an interesting part of this literature when there is a basis for intelligent collection of this specialty.

Collectors of the early commemorative (exposition) issues will find more notable covers in this period, when there was a wide variety of machine cancels. In the Trans-Mississippi period, for instance, there were eleven different makes of canceling machines in service.

This writer, having enlisted the co-operation of several collectors already active in this field, will publish in subsequent issues of the U.S.C.C. News a classification of the cancels produced by the Barr-Fyke machines, used from 1896 to 1905. We hope that this may be followed by descriptions of other makes and will welcome correspondence from collectors who are willing to help in this co-operative effort.

For the benefit of those who wish to investigate the potentialities of this collecting field we present the following reference list:

- a) The charts published by A. H. Pike in "Collectors' Digest" in 1922 were probably the first attempts at classification; a remarkable pioneering effort, but obviously incomplete and incorrect in the light of present knowledge.
- b) Delf Norona's "Cyclopedia of U. S. Postmarks" (Vol. 1 - 1933 and Vol. 2 - 1935) included articles by K. H. Smith on the machine cancellations of Cincinnati and Boston.
- c) Fred G. Floyd published in 1936 articles in the "American Philatelist" and other media, some of which were later consolidated into a series on "The Machine Commats

Next Column ....

of Boston 1876 -- 86" in Billig's Handbooks (Vols. 12 and 13) and in Blake and Davis "Boston Postal Markings to 1890".

- d) The magazine "Postal Markings" in the 1930's and early 1940's was the next vehicle for publication of machine cancellations, but attempted no classification, except elementary designation of some Columbia types by Pike.
- e) In 1946 K. F. Olson published his Handbook No. 1 including some valuable information on machine makers and an elementary classification of some types of Leavitt, American, Doremus, Barry and Universal cancels.
- f) "XX Killers", the journal of the U.S. 20th Century Cancellation Society, edited by Paul H. Segnitz from 1946 to 1955, was principally devoted to slogans. However, it contained several remarkable classifications of Barr-Fyke, Cummins (Time-Marking), Doremus, Hampden and Pneumatic cancellations as used in the 20th Century. It is now known that the Doremus treatment contained several errors and the other makes, except Cummins, are incomplete, as usage before 1901 was omitted.
- g) The compilation of slogans has been continued by Moe Luff in his well-known "U. S. Slogan Cancel Catalog", frequently revised and expanded.
- h) Leavitt machine cancellations were thoroughly studied by Frank B. Stratton, who wrote a series of articles in "U. S. Cancellation Club News" July - November 1960, culminating in a table summary in the Jan. 1962 issue.
- i) The Flag Cancel and Doremus books published by Frederick Langford, which are mentioned above.

EDITOR'S NOTE: Members interested in helping Mr. Bond in this project will please communicate with him at P.O. Box 625, Casselberry, Fla. 32707.

#### LIBRARY

We hope to be able to announce in the March NEWS the name of our new Librarian. Several members replied to our request in the November NEWS and, since we wish to secure the services of the member best qualified to handle this important post the decision will be made by the Officers and Members of the Board of Governors of USCC.

In this connection we wish to thank S.M. Horwitz (#661) for the gift of a copy of the book "RAILROAD POSTMARKS of the UNITED STATES 1861 to 1886" by CHARLES L. TOWLE and HENRY A. MEYER published by THE U. S. PHILATELIC CLASSICS SOCIETY INC.

Although many of the markings illustrated in Mr. Willard's series which starts on page 57 of this issue certainly will appear in this book none will be taken from it. All will be tracings from Covers in Mr. Willard's collection.

Mrs. Root and your Secretary wish to thank those members who so kindly remembered them with Holiday Greetings.



DENVER  
CO. APR  
1886  
R.P.O.

Kansas City to Denver  
RPO  
Similar to 907-E-2

KEDKUL & CENT.  
SEP 17  
1884  
R.P.O.

WAYCROSS & CHATT.  
MAR 2  
TAB  
R.P.O.

Y. & DON.  
TR 3  
R.P.O.

NEWPORT & SPR.  
JUN 6  
1884  
R.P.O.

Newport & Springfield  
RPO  
Towel & Mayer 35-N-1

RUT. AND JUL 8  
R.P.O.  
MORRISON'S  
SOUTH OK.

Rutland & Troy RPO  
Morrison's Ok Bath  
North and South Killers

PITTS. & TRIO  
MAR 23  
R.P.O.  
N. W. DIN.

ASTER & LOS.  
MAY 10  
R.P.O.

CIN. R.P.O. OL. & NIGH.  
AUG 30  
1887  
R.P.O.

Toledo & Cincinnati, Night  
576-C-1  
Dayton & Michigan to Cin. Ham. Mtn & D. RR's

DUNK.  
MAR 12  
R.P.O.  
N.

New York & Dunkirk  
RPO 912-N-1  
125-N-1

PHILAD.  
Y. N. FEB 1  
1886  
R.P.O.

New York & Philadelphia  
RPO

YORK & PITTS.  
TRIA. EDIV. OCT 21  
1886  
R.P.O.

New York & Pittsburgh  
RPO  
TR 14 - East Division

WILK. & MITCH.  
JAN 20  
R.P.O.

Wilbank & Mitchell  
Dak. T.  
871-C-1  
Chicago Milwaukee & St. P. RR

MIS. VAL.  
MAY 24  
R.R.

Wisconsin Valley  
Railroad  
Not an RPO

MURPH. & MARIETTA.  
AUG 10  
1887  
R.P.O.

A. & OGDEN.  
AUG 28  
R.P.O.  
W.

Ogden and Ogden RPO  
Neb  
932-L-1

SUSP. BRIDGE.  
MAR 7  
1887  
R.P.O.  
M. S. O.

ANNAZARETH.  
DEC 2  
1885  
R.P.O.  
R. D. O.

Portland & Nazareth  
Pa  
175-E-1

CITY & G. IS.  
SEP 28  
1886  
R.P.O.  
N. B. R. P. O.

Nebraska City and  
Grand Island RPO  
934-D-1  
Nebraska Railroad

W. LIB. R. P. O.  
OCT 12  
1883  
DAY

Chicago & West Liberty  
Ill RPO  
Similar to 702-J-1 but Day  
Chicago Rock Island & P. RR.

CHI. R. P. O. MID. N. D.  
SEP 22  
TR 7

RICH. & WIT.  
NOV 20  
1883  
R.P.O.

Richmond & Wilmington RPO  
Va  
305-U-1

OSWEGO & BING.  
DEC 31  
1883  
R.P.O.

PITTS.  
CO. SEP 10  
1886  
R.P.O.

oil city & Pittsburgh  
RPO.  
Allegheny Valley R.R. Co  
Penna.

CON & CH. R. P. O.  
JUL 27  
1885  
O. NICH.

Grafton & Cincinnati, RPO  
NIGHT  
Similar to 571-D-1  
B & O. R.R.  
Cincinnati, Wash & Baltimore RR

NEW YORK & PITTS.  
EDIV. TR 12  
OCT 16  
1887  
R. P. O.

CEN. VA. & WELLS.  
OCT 28  
1885  
R.P.O.

Geneva and Wellsborough RPO  
Pa  
136-A-1

PAUL & BIS.  
AUG 11  
1883  
R.P.O.  
T. S.

St Paul & Birmingham RPO  
Minn  
874-T-1  
Northern Pacific RR

JOSEPH & NELSON.  
SEP 2  
R.R.O.

ROCH. & CORN.  
APR.  
R. P. O.

Rochester & Corning  
R.P.O.  
143-C-1  
New York Lake Erie  
and Western RR.





ABBEVILLE, S.C.  
1828



CHARLESTON, S.C.  
1802



CHARLESTON, S.C.  
1802



CHARLESTON, S.C.  
1815



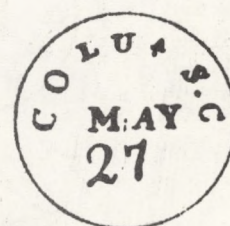
CHARLESTON, S.C.  
1820



CHARLESTON, S.C.  
1829



CHESTER C.H., S.C.  
1834



COLUMBIA, S.C.  
1813



COLUMBIA, S.C.  
1823



COLUMBIA, S.C.  
1829



EDGEFIELD, S.C.  
1826



EDGEFIELD, S.C.



GEORGETOWN, S.C.  
1824



HAMBURG, S.C.  
1835



MARION C.H., S.C.  
1854



STATESBURG, S.C.  
1812

MORE ABBREVIATED POSTMARKS FROM THE  
COLLECTION OF MR. ARTHUR H. BOND (#505)



Following lots sold with ABSOLUTE GUARANTEE OF SATISFACTION. PAYMENT MUST ACCOMPANY ALL ORDERS! If not completely satisfied all we ask is that returns are posted within 5 days of receipt and items be in the same condition as when received.

As of the moment 33 of the 50 lots advertised in last issue have been sold, AND WITHOUT ONE SINGLE REQUEST FOR A REFUND!!! I hope this means the descriptions were accurate and, if anything, good qualities were under-described. Regrets to the 8 members sending in orders without payment. We have to stick to the 'payment with order' rule. Each of the 8 would have received all or part of their orders but preference was given those orders including payment. Apologies also to the many Eastern collectors who lost out entirely to those from the far West, who received their copies of the NEWS much earlier. (Our copy arrived 12 days after the FIRST ORDER, which came from Colorado). If any readers (or my good friend, I hope, Mr. Charles Root, can offer suggestions as to how this 'problem' can be lessened), it would be appreciated. ALL LOTS POSTED VIA PROTECTED MAIL SO PLEASE ADD 50¢ ON ALL ORDERS UNDER \$10.00.

INCLUDE EXISTING STATE AND LOCAL TAXES. SECOND CHOICES APPRECIATED.

- |   |  |
|---|--|
| 1051CC. #9 with nice Boston "PAID"; VG stamp; F strike . . . . . \$13.50  | 1088CC. #91. Fine strike of Geometric Circle of V's; of V's: VG stamp. . . . . \$20.00   |
| 1052CC. #9var. UNUSED-F+ - RECUT TWICE AT BOTTOM. Slight thin. . . . . \$35.00  | 1089CC. #94. VF+ strike of complete SMALL ROSETTE IN GREEN. F stamp. . . . . \$ 8.50   |
| 1053CC. #11. Unusual "Uncle Sam" in script. Tiny faults; VF strike. . . . . \$ 5.00                                     | 1090CC. #94. Fine, bullseye strike of small HEART on VG stamp. . . . . \$ 5.00   |
| 1054CC. #24. Fine stamp with VF RED CIRCLED "PAID 3" . . . . . \$26.50  | 1091CC. #114. F strike of Bonds Village, Pa. "PAID" around large star. G stamp. . . . . \$16.50  |
| 1055CC. #24var. LARGE PAPER FOLD. Small faults. \$10.00   | 1092CC. #136. Superb strike of unusual SMALL HEAVY LINED "3" on F stamp. . . . . \$ 6.00   |
| 1056CC. #26. RARE red 3/4 TYPE A "SUPPLEMENTARY MAIL." Cat: \$75.00. . . . . \$19.50                                    | 1093CC. #147. Superb strike of unusual GRID WITH "F" IN CENTER; VF stamp. . . . . \$ 7.50  |
| 1057CC. #26. Fine stamp with fine "FREE." . . . . \$ 6.50   | 1094CC. #147. VF++ strike of scarce BAT IN CIRCLE on G stamp. . . . . \$37.50  |
| 1058CC. #63. Very good UNUSED MARGIN COPY. Pale blue, full gum. . . . . \$ 7.50   | 1095CC. #148. VG strike of "YOKOHAMA, JAPAN"; stamp with small faults. . . . . \$ 5.00   |
| 1059CC. #63. Good stamp with F RED CARRIER on small piece . . . . . \$ 4.50   | 1096CC. #149. VF+ strike of circ. geometric of Leominster, Ms. on F stamp with S.E. . . . . \$ 7.50  |
| 1060CC. #63. Fine stamp with SUPERB, full large NEGATIVE "T" . . . . . \$16.50  | 1097CC. #158. Fine strike of "VOID" on nice stamp with s.e. . . . . \$ 6.50  |
| 1061CC. #63. Fine, strong STRIP OF 3; VF+ strike "NEW YORK Oct. 23, 1861" - scarcest of year dates. . . . . \$18.50     | 1098CC. #158. Superb strike of SMALL NEGATIVE MASONIC SQ. & COMPASS. VG STAMP WITH s.e. \$ 7.50  |
| 1062CC. #67a. VF strike of San Francisco SUNBURST. Stamp faulty. Used cat. \$67.50 . . . . . \$ 9.50                    | 1099CC. #158. VF strike of unusual, complete SKULL & CROSSBONES. F stamp but for 1 sh. perf. \$17.50                                       |
| 1063CC. #68. Fine stamp with partial strike of circular "STEAMSHIP." . . . . . \$ 5.50                                  | 1100CC. #158. VF+ strike of LARGE MAN'S PROFILE. F. stamp. . . . . \$18.50   |
| 1064CC. #68. Fine stamp with partial strike of str. line "STEAMSHIP." . . . . . \$ 4.50                                 | 1101CC. #158. Good UNUSED BLOCK OF 4, OG, bright color. . . . . \$15.00  |
| 1065CC. #68. VG stamp with VF, full red boxed foreign "PD" . . . . . \$10.00  | 1102CC. #158c. Double paper variety in BLOCK OF 4. RARE THUS. VG. . . . . \$60.00  |
| 1066CC. #69. VF strike of red boxed foreign "PD" - stamp with rounded corner. . . . . \$ 6.00                           | 1103CC. #158TC. Superb block of six BLACK INDIA PLATE PROOFS ON CARD . . . . . \$25.00   |
| 1067CC. #69. Diagonal blue straight line "STEAMBOAT" - corner crease . . . . . \$10.00                                  | 1104CC. #159. VF strike of negative "M" in boxed square. Unusual cancel. VF+ stamp but for 1 blunted perf. . . . . \$ 5.00                 |
| 1068CC. #71. VF, full strike of CIRCLED 5 PTD. STAR. Cpl. blunt perfs. Otherwise fine. \$10.00                          | 1105CC. #161. Good strike of unusual small STAR WITH LARGE STAR. F stamp. . . . . \$ 5.00  |
| 1069CC. #71. VF+ strike of LARGE 5 PTD. STAR on fine stamp. . . . . \$10.00   | 1106CC. #161. VF+ strike of scarce type small BOXED MALTESE CROSS. Lovely stamp but for cpl. blunted perfs. . . . . \$ 6.00                |
| 1070CC. #73. VF stamp with VF++ strike of CROSSROADS, or DBL. LINED "X" or CROSS. Take your pick. . . . . \$12.50       | 1107CC. #178. VF strike of Beloit, Wisc. negative "OK" in KEYSTONE. VG stamp. . . . . \$ 6.50  |
| 1071CC. #75. VF+ stamp with VF, bullseye strike of NYC CIRCLED STAR. . . . . \$23.50                                    | 1108CC. #182. Superb geometric; sometimes called arrowheads. VF stamp. . . . . \$ 8.50   |
| 1072CC. #78. F stamp other than 1 sh. perf; F cpl. strike of 3 LEAF CLOVER . . . . . \$12.50                            | 1109CC. #183. VF strike of RARE, DETAILED MAN'S FACE. G stamp. . . . . \$18.50   |
| 1073CC. #78 VF+ stamp but for 1 sh. perf; virtually perfect strike of BULLSEYE. . . . . \$10.00                         | 1110CC. #184. VF+ full strike of rare FANCY BEER MUG. VF stamp but for s.e. . . . . \$26.50  |
| 1074CC. #78. VG strike of San Fran. SUNBURST on VG stamp . . . . . \$ 7.50  | 1111CC. #184. F+ strike of Canton, Miss. HARP in BLUE. F stamp . . . . . \$12.50   |
| 1075CC. #78b. Fine strike of unusual 6 PTD. STAR. VG stamp . . . . . \$ 5.00  | 1112CC. #206. Superb, clear GLEN ALLEN STAR PRE-CANCEL. Good app. stamp with small thin . \$10.50  |
| 1076CC. #150. Fine strike of SMALL LEAF; stamp with small faults. . . . . \$ 4.00                                       | 1113CC. #206. Superb, bullseye strike of scarce CIRCLED "1" - VG stamp . . . . . \$10.00   |
| 1077CC. #150. VF strike of beautiful and unusual ROSETTE. VF+ stamp. . . . . \$ 8.50                                    | 1114CC. #207. VF TERRITORIAL IN MAGENTA: CUMMINGS, NEW MEX. JAN 21, 1883. F+ stamp. . . . . \$10.00  |
| 1078CC. #150. UNUSED, perfs cut on 2 sides, nice color, full OG. Cat. \$45.00 . . . . . \$15.00                         | 1115CC. #207P3var. - Vertical pair of PLATE PROOFS on perforated paper . . . . . \$10.00   |
| 1079CC. #156. Scarce MAN'S PROFILE. VF strike on VG stamp . . . . . \$16.50   | 1116CC. #211. UNUSED PAIR. OG, never hinged. VG. \$17.50   |
| 1080CC. #157. Superb "W" in script of Weston, Conn. on superb stamp. . . . . \$10.00                                    | 1117CC. #214. UNUSED BLOCK OF 4 of this lovely issue. VG to F. Fresh . . . . . \$21.50   |
| 1081CC. #157. VF+ strike of "CB" on good stamp . \$ 5.00  | 1118CC. #215. UNUSED BLOCK OF 4 WITH MARGIN CONTAINING "L" and "No." - bright and fresh. VG. . . . . \$35.00                               |
| 1082CC. #158. Light but easily distinguishable Pittsburgh SKULL AND BONES IN COFFIN. VG stamp. . . . . \$12.50          | 1119CC. #230 PLATE BLOCK OF 6 (No. 149) - Scarce in any condition. VG. . . . . \$55.00   |
| 1083CC. #158. Unusual small "STEAMBOAT" in block letters. Superb strike; stamp with some clipped perfs. . . . . \$10.00 | 1120CC. #230. UNUSED BLOCK OF 4. Bright, F. appearing. SMALL thin. . . . . \$ 8.50   |
| 1084CC. #158. Bullseye strike of UNUSUAL MAN'S HEAD. F stamp! F stamp. . . . . \$15.00                                  | 1121CC. #231. UNUSED BLOCK OF 4. Bright, fresh color. VG. . . . . \$ 8.50  |
| 1085CC. #158. VF Pair with New York "STEAMSHIP" cancels - VF strikes. . . . . \$21.50                                   | 1122CC. #236. UNUSED PAIR WITH PART IMPRINT. Bright, fresh color, O.G. VG. . . . . \$12.50   |
| 1086CC. #158. VF bullseye strike of small SHIELD WITH NEGATIVE "76" - stamp with s.e. . . \$12.50                       | 1123CC. #266. Scarce UNUSED IMP. & PLATE BLOCK (no. 170) of 6. VG to F. . . . . \$53.50  |
| 1087CC. #78c. Superb strike of CIRCLED 5 PTD. STAR. Cent. to bottom; 2 sh. perfs. . . \$19.50                           | 1124CC. #329. UNUSED BLOCK OF 4. Lovely stamps for one so hard to find with top notch centering. Has to be VF. Reinforced. . . . . \$ 9.50 |
|   | 1125CC. #397. Fine+ unused PLATE BLOCK OF 6. FULL OG AND UNHINGED (but for small reinforcing in selva). . . . . \$50.00                    |



J. F. TENNEY.

## POSTMASTERS TAKE NOTICE.



**BUY DIRECT OF THE**  
*Old Reliable Stamp House.*  
**J. F. TENNEY,**  
 Successor to Tenney & Reese,  
 70 Madison Street, CHICAGO

GOODS SENT ON APPROVAL.

Wheel Daters, M. O. B.	-	\$6.50
Model Band Daters,	-	3.00
Atlas Band Daters,	-	3.00
Flexible Hand Dater, for P. O. use,	-	2.00
One Line Rubber Stamp,	-	.15
Pat. Keystone Ink Pad, all colors,	-	.50
The Chicago Ink Pad, now being	-	
used by the Government, Pat. July 21, '85,	-	1.00
Black Ink, 6 oz. Bottles,	-	.75
No. 6 Blue Ribbons for M.O.B. stamps, per doz.	-	3.00

J. F. TENNEY, successor to TENNEY & REESE, 70 Madison St; Chicago was "THE OLD RELIABLE STAMP HOUSE." Their CHICAGO INK PAD patented in July 21, 1885 was now being used by the Government.

VANDERHOVEN &amp; FITZPATRICK.

Located at 16 Spruce St; New York made postmasters copper-faced post office stamps.

"We can furnish a beautiful set of copper-faced stamps for five dollars - type, ink, buff and everything complete. The most durable and beautiful stamp ever made."

"A beautiful set of wood stamps complete as above, i.e; office stamp, PAID 3, FIVE, and THREE, ink, and buff, but not the type, will be furnished for three dollars. Warranted to give satisfaction."

They also had the RODE'S UNITED STATES POST OFFICE DIRECTORY and POST GUIDE, containing the names of all the Post Offices and Post-Masters in the UNITED STATES up to the 1st. January, 1853, with all rates of U.S. Postage to all parts of the world for only 50 cents.

COLLINS &amp; CO.

COLLINS & CO; NEW YORK made brass stamps, 1853 period.

MARCUS P. NORTON.

Mr. Norton was the patentee of a combination postmarking and canceling stamp.

JOHN GOLDSBOROUGH.

P.O.Box 583 (Office 619 Walnut St.) Philadelphia, Pa; patented May 12th. 1874 his first class metal stamp, made of steel, with the month, day, year, hour, and half hour. Also, a fine quality, made of "HARD BRASS"

GOLDSBOROUGH also made rubber stamps, seal presses, consecutive numbering machines, etc.

Numerous Pa. townmarks are of his making.

The EAGLE STAMP MFG. CO. were successors of the GOLDSBOROUGH CO.

SOME MORE SUPPLIERS OF EQUIPMENT FOR POST MASTERS

SENT IN BY RICHARD RUSSELL (#444)