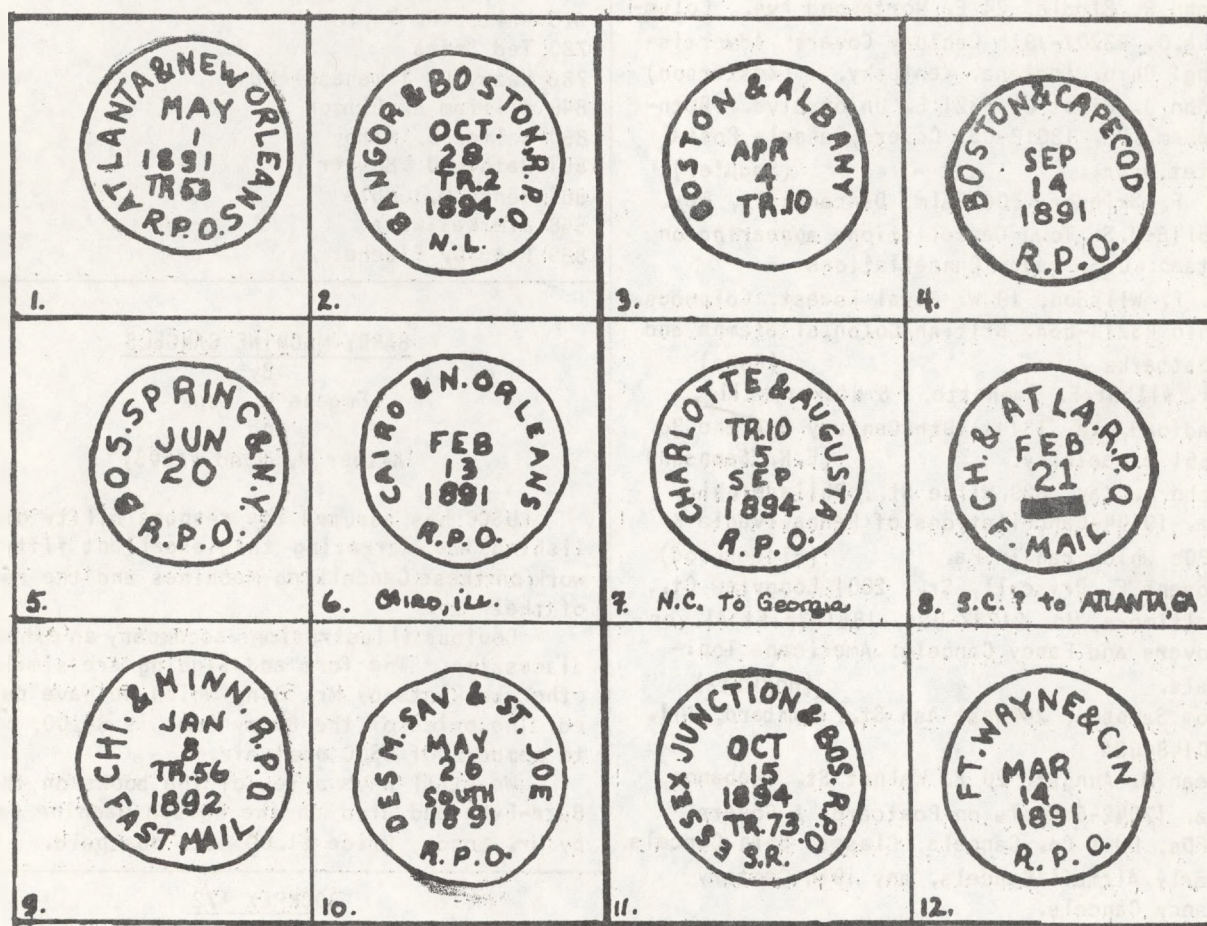




Cancellation Club NEWS

VOL. 11 - NO. 2 WHOLE NO. 117

MARCH - 1972



SEE PAGE 13 FOR ARTICLE AND PAGE 14 FOR ADDITIONAL ILLUSTRATIONS.

THE U S CANCELLATION CLUB NEWS

Published six times a year, January, March, May, July, September and November by the US CANCELLATION CLUB and sent free to members.

Back numbers 25¢ each to members.

Subscription price to others. \$2.50 per yr.
50¢ per copy.

ADVERTISING RATES

Full page.....\$15.00
Half page..... 8.00
Quarter page..... 4.50
Column inch..... 1.00
Adlets 2¢ per word, min. 50¢

Address communications to the Club Secretary,
C. D. Root, 855 Cove Way, Denver, Colo. 80209.

NEW MEMBERS

- 928 John R. Biddle, 24 E. Northwood Ave., Columbus, O. 43201-19th Century Covers; Advertising: Ohio, Indiana, Kentucky. (Kesterson)
- 929 John J. Sipos Jr., 321 E. Union Blvd., Bethlehem, Pa. 18018-USA Covers, Cancels, Postal Stationery. (Saddler)
- 930 C. F. Skinner, 706 Palm, Duncanville, Tex. 75116-U.S. Town Cancellations appearing on stamp; U.S. Fancy Cancellations
- 931 J. F. Wilsdon, 19 W. Royal Forest, Columbus, Ohio 43214-USA: British Colonial Stamps and Postmarks (Bond)
- 932 Dr. Wilbur F. Amonette, 6 Hickory Hill, Radford, Va. 13141-19th Century USA the 3¢ 1851 especially. (E.N. Sampson)
- 933 John L. Kay, 329 Milne St., Philadelphia, Pa. 19144-Cancellations of Pennsylvania & RPOs which ran in Pa. (Fingerhood)
- 934 Joseph E. Driscoll, Sr., 2001 Longview Ct., Baltimore, Md. 21237-USA, 1861 3¢ Et Al. on Covers and Fancy Cancels: Americana Topics. (Horwitz)
- 935 Tom Sampson, 24 West Ash St., Lombard, Ill. 60148-USA
- 936 Dean M. Aungst, 20 E. Walnut St., Lebanon, Pa. 17042-Cancels on Postcards & Covers, RFDs, PM & Co. Cancels, Classic Ship Cancels, Early Airmail Cancels, any 19th Century Fancy Cancels.
- 937 Denver W. Henline, 541 S. Clifton St., La Habra, Cal. 90631-USA; UN; Germany. (Tinsley)
- 938 Walter W. Humphreys, 850 Elderberry Way, Boca Raton, Fla. 33432-Specializing in #210 & 3¢ Green Bank Notes.
- 939 William F. Weber MD, 661 Live Oak Ave., Menlo Park, Cal. 94025- USA Stampless Covers Booklet Panes. (Herst)
- 940 Sidney P. Kanne, 4620 Wieuca Road, #22, Atlanta, Ga. 30342-Many different types of Cancels on stamps & Covers. (H. Jackson)

RESIGNED

356 Dr. Otto Bacher.

CHANGES OF ADDRESS

581 Glen R. Swegles to A21 Abington Drive, Hightstown, N.J. 08520 from Sayre, Pa.
733 Capt. F. H. Hemphill Jr. USMC to 26396 Avenida Deseo, Mission Viejo, Cal. 92657 from Monterey.

DECEASED

81 Clark P. McCrea

DROPPED During 1971

353 Alex Ullrich
363 James R. Littleton
449 Dr. Robert L. Landis
584 William N. Hoffmann O.D.
670 Walter G. Taylor
780 Ted Smits
786 Kazuyuki Takahashi MD
849 William R. Gibson
850 Walter J. Kirby
861 Mathew J. Bowyer
865 Henry M. Gobie
868 Jim Kajiware
889 Fred C. Fischer

BARRY MACHINE CANCELS

By
Eugene M. Funk
and
Arthur H. Bond (#505)

USCC has assumed the responsibility of publishing and marketing this excellent fifty page work on these Cancelling Machines and the results of their use.

Copious illustrations accompany an exhaustive discussion. The form and binding are similar to other booklets by Mr. Bond which we have published. The price of the Barry Book is \$4.00, \$3.50 to members of USCC postpaid.

We still have a few of the books on the Barr-Fyke and also on the Hamden Machine Cancels, by Mr. Bond. Price \$1.00 each postpaid.

ROCKPEX '72

The Rockland Philatelic Society will hold its fifth annual Exhibition & Bourse on May 6-7 at the South Madison Elementary School in Spring Valley, N.Y. For information reg. Cacheted Covers, Exhibiting or Bourse Tables write Moe Luff (#252) 12 Greene Road, Spring Valley, N.Y. 10977

Milton Mitchell (#279), along with several other distinguished Philatelists has been appointed to the "Philatelic Advisory Panel of the American Revolution Bicentennial Commission. Also his name was in the news because of the theft of a good part of his collection. We sympathize. The report now is that some of the lost items have been recovered.

OLD US COVERS ARE MY SPECIALTY

Write for my FREE special lists. Approvals gladly sent to U.S.C.C. members on request.

The New 1971 Edition American Stampless Cover Catalog Paper Bound, Post Paid..\$7.00
Hard Covers, Post Paid.....\$10.00

E. N. SAMPSON
Box 592 Bath N.Y., 14810

U. S. COVERS

I STOCK ALL AREAS, ISSUES, USAGES, CANCELS EXCEPT MODERN FDC. WHAT WOULD YOU LIKE TO SEE? SELECTIONS SENT ON APPROVAL TO USCC MEMBERS ON REQUEST.

HENRY M. SPELMAN III

P. O. Box 488

LEXINGTON, MASS. 02173



WANTED

NEW HAMPSHIRE STAMPLESS UP THRU 1840

From the towns of: Amherst, Charlestown, Concord, Dover, Exeter, Hanover, Haverhill, Keene, Plaistow, Plymouth, and Portsmouth.

D. K. BALL
1562 Bruton Court McLean, Virginia 22101

HANDBOOKS FOR CANCELLATION COLLECTORS

Colorado Railway Post Office Routes
by John H. Willard.....\$1.50

Wyoming Territorial and Pre-Territorial
Post Offices by Daniel Y. Meschter.\$2.50

Postal History of Colorado
by Bauer, Ozment & Willard.....\$15.00

all postpaid

Daniel A. Stone, 1545 Glenarm Place
Denver, Colo. 80202

URGENTLY NEEDED for our cover mail auctions: U.S. Stampless and early Stamped Covers of all types with various markings; fancy cancels or just plain cancels. Collections, accumulations or single items are welcomed, any quantity. More information sent upon request. Our Auction Lists are sent free to anyone requesting a copy.

MAXWELL A. YOUNG (#902)
706-C Southport St., Elmira, NY 14904

For Sale---

1. 8 Different "Official P.O. Guides" for the years 1927-34. The set \$20. or \$4.00 each.
2. Walcott Civil War Patriotic Book and prices realized by Laurence - \$32.50. The only book on Civil War Patriotic covers.

DAVID LAWSON
RFD #2 Box 455-A
Woods Lake
Middleboro, Mass. 02346

WANTED-N.Y.S. Cancels on 1851-1869 covers and U218-U221 Centen. Issue Entireties.

Unused Patriotics.

D. WASSERMAN,
2104 Holland Av., Bronx, N.Y. 10462

POSTAL MARKINGS 1890-1894

by
Eugene C. (Ed) Denson (827)

In their great work Railroad Postmarks of the United States 1861-1886 Towle and Meyer say(p.12) "The listing of R.P.O. marks ceases with 1886 because after that year the number of markings increases so enormously that a book nearly twice the size of this one would be required to list them just to the end of the 19th century." I have bought all which have come my way in the past several years, and illustrate here those which I am positive I can identify. I have not found them so common as Towle and Meyer, but quite possibly I do not know where to look yet.

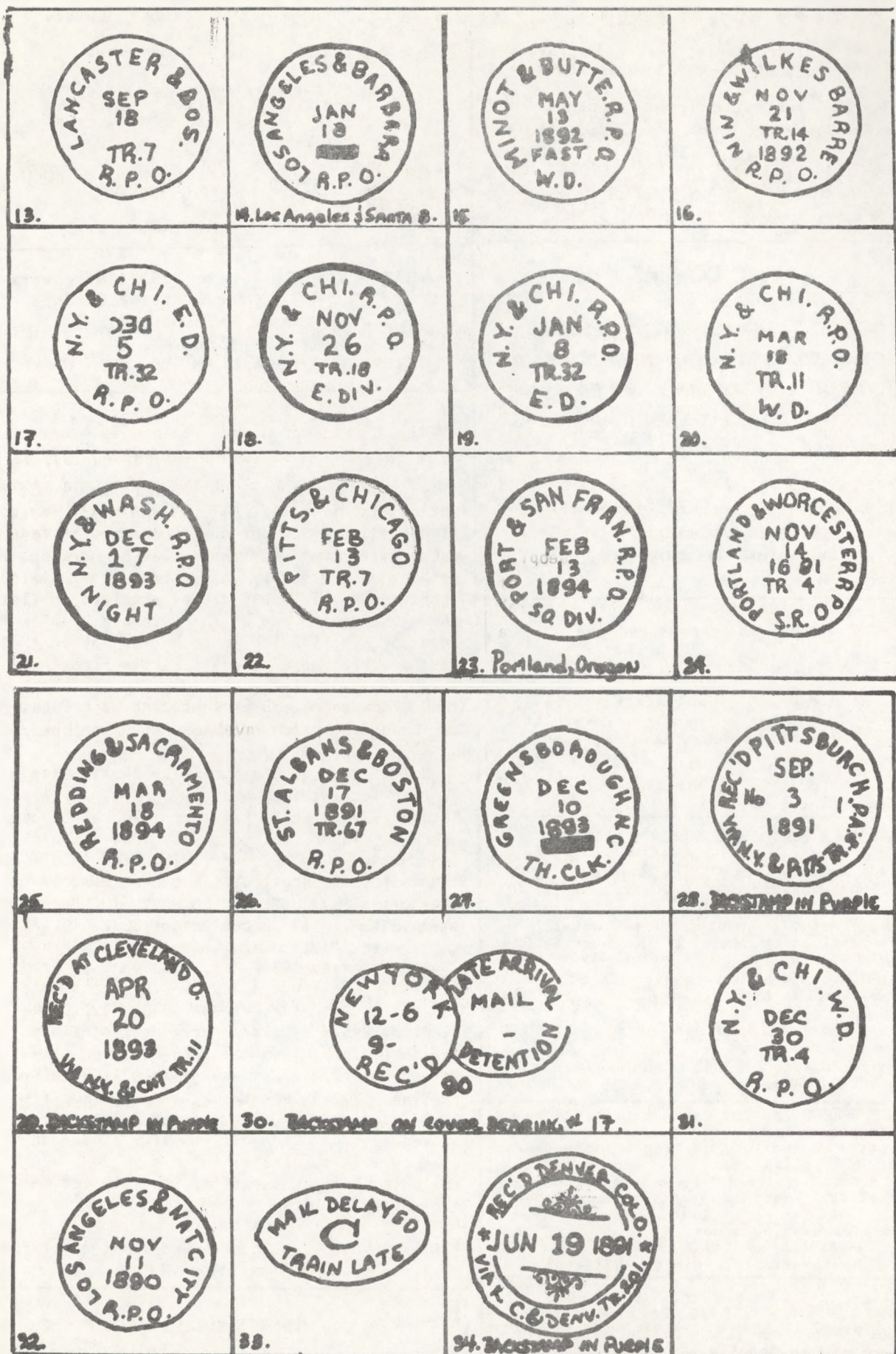
Notes: 2.N.L.? Could this be "North Line"? 3. Imperfect strike, probably R.P.O. 4. Also October 1890. 5. Backstamped 1890, also September 10, 1890. I have a July 1890 use with year date. 10. The cover originated in St. Joe and went to Connecticut. I cannot discover what city "Sav." is. 11. "S.R."? 13. Backstamped 1894. 14. Backstamped 1892. 15. Also known with "Fast" over the date. 16. "Nin"? 17. Backstamped 1890. 18. Also Jan. 9, Tr. 32, 1891. This use is 1890. 19. Backstamped 1890, also Dec. 10, Tr. 34/ 1890. 22. Backstamped 1895. 24. Very early use, possibly the only R.P.O. from the 17th century. (Inverted dater). 27. I assume this is a railroad marking. 30. A backstamp. Also 2-20-90, 11-17-90, 1-9-91. 31. Backstamped 1891. 33. A backstamp from Chicago 12-10-91. I have an example with the letter "D" also. 34. My apologies but the backstamp is distorted on the cover.

Editor's Note: See Page 14 and front cover for illustrations.

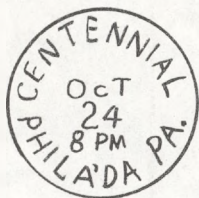
ILLINOIS CANCELS

On pages 17 & 18 we show #s 901-931 of this series by Richard Russell (#444).

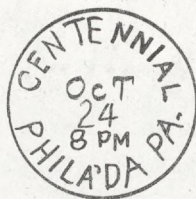
Eugene M. Espy(#897) has been elected Vice-President of the Macon (Ga.) Philatelic Society, co-sponsor of the Sidney Lanier Stamp-Issuance Day. He was in charge of the Philatelic Exhibition at the luncheon.



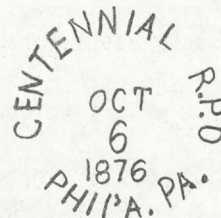
CENTENNIAL INTERNATIONAL EXHIBITION 1876
Philadelphia, Fairmount Park. May 10 to Nov. 10
By Hobbs W. Jackson (#788)



76-1



76-2



76-3



President Grant opened the Centennial Exhibition on May 10, 1876, ten days after the scheduled opening date. This was our first worlds fair and everyone concerned worked hard to make it a success. The fair was a success in every way except financially. Mr. Raymond Marsh in his wonderful booklet, "Fairs, Exhibitions and Expositions and Their Souvenirs," states that the fair covered 236 acres, had 50,000 exhibitors, had a total attendance of 10,000,000 people, cost \$8,500,000 and only had receipts of \$4,000,000. Despite the lack of financial success, the government considered the fair a success because of the wonderful reception to the many products on display.

The only difference between cancel 76-1 and 76-2 is that the L of Centennial is one millimeter closer to the A of Pa in 76-1 than 76-2. No attempt will be made here to determine which is the more scarce variety. In this article I shall refer to both varieties as the same cancel. The earliest known example of this cancel is on a cover with the corner card of the Centennial Commission and franked with a 3¢ green regular stamp and dated April 20, 1876. This was before the fair opened, the post office operated before the opening and after the closing dates, with cancels known as late as December. Many thousands of covers received this cancel and even today they are fairly easy to obtain on a cover with a 3¢ green regular stamp. It is quite another matter to obtain this cancel on one of the special Centennial commemorative stamped envelopes. These envelopes were made by the Plimpton Manufacturing Company. Scotts United States specialized stamp catalog lists four varieties of the commemorative envelope, U217 3¢ red, U219 3¢ green, U220 3¢ red, and U221 3¢ green. U220 is not known used, so we have only one variety of the red envelope (U218), and two varieties of the green envelope, (U219 & U221) that are known with the exhibition cancel. the earliest known usage of the

exhibition cancel on the commemorative envelope is May 12, 1876, only two days after the fair opened. This cancel is on a U221 green envelope. According to Mr. William H. Maisel, who is one of our leading experts on these stamped envelopes and their cancels, the green envelope, (U219), is by far the most common with the exhibition cancel. Only a few of the red envelopes, (U218), are known. It is remarkable that any of the red envelopes are known with the exhibition cancel. The green envelopes were manufactured on the exhibition grounds at the U.S. government exhibit and sold in the Centennial post office. The red envelopes were all made in Hartford, Connecticut. They were also made in a different size than the green envelopes. People at the fair were very impressed with the envelope making machine, as evidenced by this excerpt from the book, "The Centennial Exposition Described and Illustrated," by J. S. Ingram. "The flat piece of paper was placed in at one end, and drawn through the intricate machinery, receiving the stamp, and being gummed and folded, passed out at the other end a complete envelope, ready for use. As every twenty-fifth envelope passed into the tray awaiting its reception, the next envelope slipped automatically a little out of the regular line, in order to mark the divisional number to be included in each package. So beautiful and regular was this piece of mechanism in its every movement, that it seemed as if it was endowed with life and understanding, and indeed, the best mechanics could not make by hand envelopes with anything like its precision. The rapidity of the work may be judged from the fact that, on an average, twenty-five thousand envelopes were made a day by this machine, without taxing its capacity in the least."

In machinery hall, a "writing machine" was being shown by the Remington Typewriter Company; where specially trained girls, would for the sum of 25¢, address one of the green Centennial envelopes. (Continued on Page 16.)

velopes to the folks back home, and type your salutation and name on the special souvenir enclosure. These philatelic souvenirs are much sought after today as they give us three "Firsts". (1) First public use of typewriter, (2) First U.S. commemorative stamped envelope, (3) First U.S. exposition postal markings. These envelopes are very scarce today. Very seldom is one offered for sale.

Mr. Ingrams comments on other exhibits of the post office department are as follows: "Among the exhibits in this department were fine specimens of all the different varieties of stamps, stamped envelopes, mail bags, topographical maps of the various post routes, and all the principal blanks, bound in book form, used by the department. Other interesting exhibits were Franklins old ledger account when he was Postmaster General, and a model showing the patent mail-catcher used in the fast trains, which pick up the letter bags at the station while the train is running at full speed."

In order that all previously used, issued stamps of the U.S. could be exhibited, the post office department ordered special printings of all past stamps; new dies had to be cut for the 1847 issue. These special printings account for over fifty numbers assigned to stamps up to this time, and has been the cause of much confusion among stamp collectors. The special printings were not sold at the Centennial, but were only obtainable from the post office at Washington, D.C. Collectors of that time were very unappreciative of this scheme to fleece them. That is why the specialist of today can find few of them, and have to pay such fantastic prices for these special printings. The stamped envelopes of the Primpton Company were also reprinted. The newest branch of the government, The Internal Revenue Bureau, had as its main exhibit a showing of all the varieties of revenue stamps issued by the department.

The Centennial post office was an actual work-post office as witnessed by this description of it from Mr. Ingrams book. "There were employed at the office ten regular carriers and six clerks, and four mail wagons which arrived and departed every hour of the day. The Centennial post office only delivered matter addressed to persons within the grounds; all other letters or papers for the city being sent to either station B, West Pa., or to the regular city post office. This department in the government building was a complete working office, illustrative of the U.S. postal service, and foreign orders for any part of Great Britain, Germany, Switzerland, or Canada were

obtainable the same as at the down town office, while registered letters were dispatched for any part of the civilized world". In addition to the post office itself there were two working models of railway post offices. Seven clerks were employed in these two cars. Naturally, this is where cancel 76-3 was used. In all, only four examples of this cancel are known. Three of these are on facing slips and the other on a U.S. postal card. As far as the collector is concerned, we have only one copy that actually passed through the mails. Mr. Ingram tells us that the Centennial post office mailed money orders and registered letters all over the world, yet not even one example of these cancels has been found. With seven clerks employed in the railway post office, thousands of letters must have received the R.P.O. cancel, but only one postally used specimen has come down to us. These cancels surely exist somewhere. Be sure to be on the lookout for them

Many illustrated covers exist from this fair. Most have pictures of the fair buildings on the back. Some have very small illustrations just on the back flap. Many advertising cards have been seen. These were given out by merchants or exhibitors. Almost all of these have pictures of the fair buildings on them. Many album cards are known in both small and large sizes. No exposition postal cards are known for this fair but the United Postal Stationary Society lists six postal cards from this fair under the exposition collateral card section of the new U.S. Postal card catalog.

Many of you older collectors are saying by now that you have read this article before. You are correct; this is simply an attempt to update the wonderful exposition cancel catalog written some years ago by the late Edwin R. Payne. Bob Payne has very generously consented to help me with this project. We know that this is a tall order and we will greatly appreciate any help we can get. If you have a scarce exposition cancel that is not listed in the old catalog, a drawing would be much appreciated by both of us.

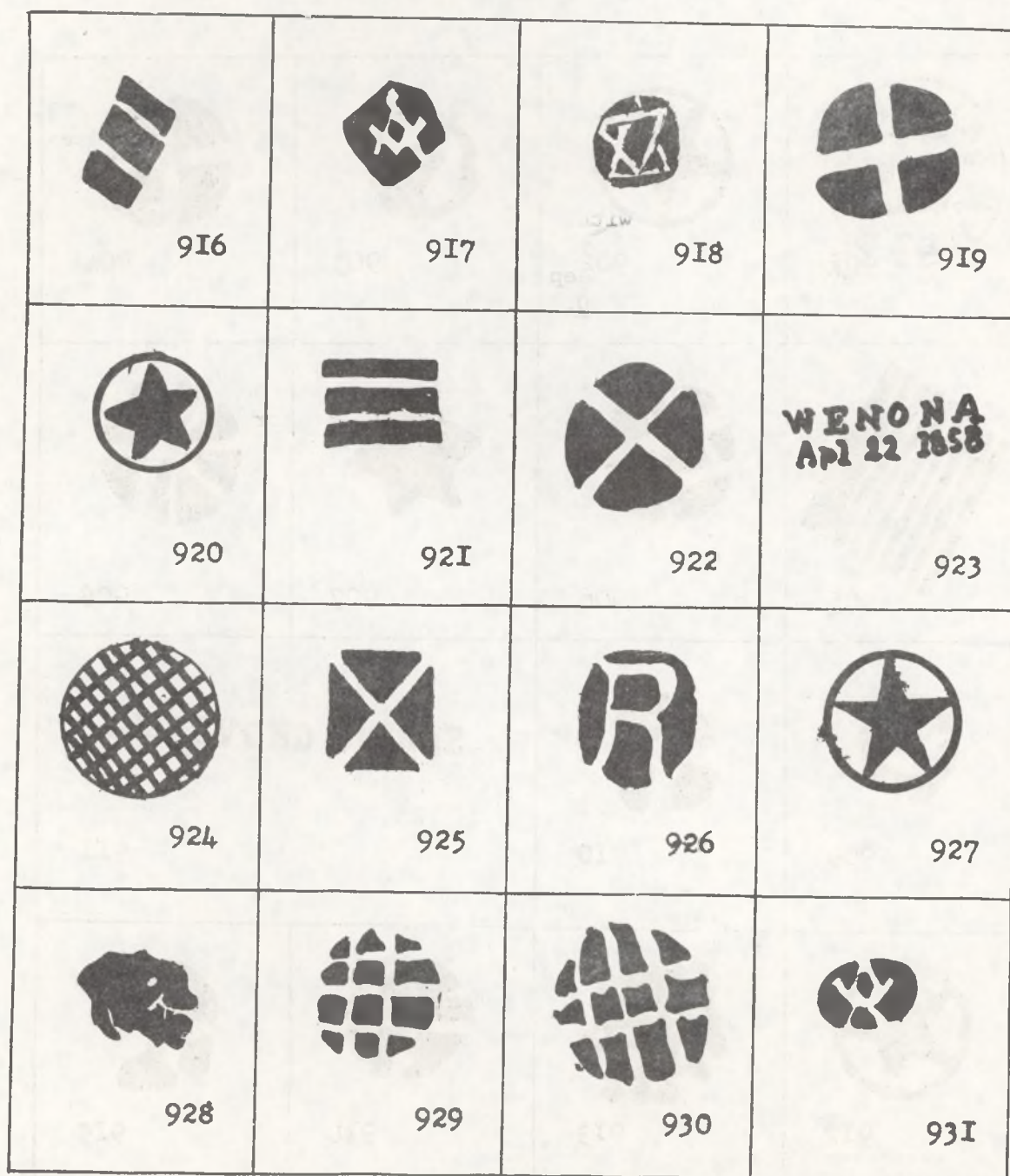
FINPEX '72

The fifth annual exhibition and bourse of the Fort Findlay Stamp Club will be held April 8-9 at the Imperial House, 1-75 & Ohio 12. Lack of space prevents a full discussion but write Hobart E. Smith, 832 Maple Ave., Findlay, Ohio 45840 if interested in cacheted covers or other information.

- #901 - MAGENTA, RANTOUL, #184.
 #902 - BLACK, ROBERTS, #U313.
 #903 - BLACK, BOCHELLE, #210.
 #904 - BLACK, ROCKFORD, #210.
 #905 - BLACK, ROCKFORD, #210.
 #906 - BLACK, ROCKFORD, #210.
 #907 - BLACK, ROCKFORD, #210.
 #908 - BLUE, RUSHVILLE, #156.
 #909 - BLUE, RUSHVILLE, #158.
 #910 - BLACK, SHANNON, #207.
 #911 - BLACK, SPRING GROVE, #207.
 #912 - BLACK, MAGENTA, SIBLEY, #U349.
 #913 - BLACK, TOULON, #158.
 #914 - BLACK, TOULON, #213.
 #915 - BLACK, URBANA, #65.



- #916 - BLACK, VANORTWICK, #U3II. #924 - BLACK, WILLIAMSVILLE, #II.
 #917 - BLACK, VERMONT, #II4. #925 - BLACK, WINCHESTER, #I47.
 #918 - BLACK, WARREN, #65. #926 - BLACK, WINCHESTER, #U349.
 #919 - BLACK, WATERLOO, #226. #927 - BLACK, WORDEN, #I84.
 #920 - BLACK, WATERMAN, #2IO. #928 - BLACK, WRIGHTS GROVE, #2IO.
 #92I - BLACK, WATSEKA, #I84. #929 - PURPLE, WYOMING, #UX5.
 #922 - BLACK, WAUCONDA, #207, 209. #930 - BLACK, WYOMING, #U278.
 #923 - BLACK, WENONA, #26. #93I - BLACK, YOUNG AMERICA, #II4.



PHILATELIC SMORGASBORD - CASH WITH ORDER - ADD EXISTING STATE SALES TAX - ADD \$1.00 on ALL ORDERS UNDER \$10 - EVERY ITEM SHIPPED WITH GUARANTEE OF SATISFACTION BUT RETURNS MUST BE POSTED WITHIN 5 DAYS OF RECEIPT. USE LOT NUMBERS AND 2ND CHOICES IF POSSIBLE AS ALL LOTS ARE ONE OF A KIND.

47. #26- Pretty nice strike of "STEAMBOAT" in BLUE on F stamp. Cat: \$15+ - \$7.50.
48. #26- Bullseye strike of (STEAM)"BOAT" on fine stamp. Cat: \$15. \$6.50.
49. #63- Fine strike of San Francisco Cog-wheel on Fine+ stamp. \$4.00.
50. #92- VF strike of LARGE CIRCLED STAR on sound but s.e. stamp. \$6.00.
51. #161- F strike of NYFM M-#79; V-W#S11 on very good stamp. \$3.00.
52. #161- VF strike of NYFM M-#20; V-W#A20 on Fine+ stamp. \$5.00.
53. #161- F strike of rare NYFM M-#14; V-W #G14 on VG stamp with short perfs. \$5.00.
54. #U10- Fine+ "STEAMBOAT" on full cut square (means good borders). \$3.00.

LINCOLN ITEMS

55. #77P3- VF plate proof on india. \$8.00.
56. #77P3- VF MARGIN BLOCK of plate proofs on india. \$37.50.
57. #77P4- Fine plate proof on card with minor toning. \$4.00.
58. #116E-Dj-VF+ essay of 10¢ 1869 in deep ultramarine. Beautiful shape! \$30.00.
59. #122P4- Fine+ plate proof on card. Hard to find singly. \$30.00.
60. #122P4- Plate proof on card, large & full margins-WITH PART IMPRINT & PL. NO. "22" - minor toning. \$50.00.
61. #148P3-F plate proof on india. \$3.00.
62. #159P4- Superb app. plate proof on card-large margins BUT with thin. Cat: \$25. Net: \$10.00.
63. #148- SUPERB NYFM M-#4; V-W-#A4 on fine stamp. \$5.00.
64. #159- VG NYFM M-#83; V-W-#S14 on good stamp. \$3.00.
65. #159- SUPERB NYFM M-#83; V-W-#S14 on VF stamp. \$6.50.
66. #159- VF 2/3 NYFM M-#19; V-W-#A19 on F stamp; cpl. blunt perfs. \$4.00.
67. #159- VF NYFM M-#38; V-W-#65 on F stamp; 1 blunt perf. \$4.00.
68. #159- VF NYFM on margin copy with 3 huge margins. \$5.00. M-#90; V-W-#C1. 1 margin close.
69. #122-VERY FINE APP; VERY LIGHT CAN-CEL. WAY ABOVE AVE. CENTERING; 3 large margins-other clears. Cpl. TINY corner creases; int. crease not seen front. Cat: \$260. \$90.00.

ITEMS ON 1869'S

70. #112P4 - VF plate proof-card. \$7.50.
71. #112P4-F+ plate proof on card. \$7.00.
72. #112P3-F+ plate proofs on india. F BLOCK OF 4. \$45.00.
73. #112P3-VF++ MARGIN BLOCK OF 4. India plate proofs. \$60.00.
74. #113P4- VF plate proof-card. \$3.50.
75. #113P3- VF but for TRIVIAL thin-margin block of 4. \$16.00.
76. #114P3-F+ BLOCK OF 4 but for SMALL hinge thin. On india. \$10.00.
77. #115P4-SUPERB card proof. \$5.00.
78. #115P3-Fine BLOCK OF 4- india plate proofs-SMALL hinge thin. \$16.00.
79. #116P3-VF app. MARGIN BLOCK OF 4-india plate proofs. Hinge thin. \$27.50.
80. #117 RARE SPECIMEN VARIETY. "SPECIMEN" OP plus ms "X". Off center but hardly affects such a rare item. \$60.00.
81. #120P3-SUPERB-proof on india. \$16.00.
82. #120P4-VF plate proof-card. \$12.00.
83. #121P3-SUPERB india proof. \$20.00.
84. #121P4-SUPERB card proof. \$15.00.
85. WHAT COULD BE A GROUP OF UNIQUE CARD PROOFS-112,113,115,117,120 & 129P4's. Card plate proofs-ALL WITH BLUE "SPECIMEN" OVERPRINT!! Fine to Superb. \$300.00 for lot. Available at \$60.00 per each if not sold as lot.

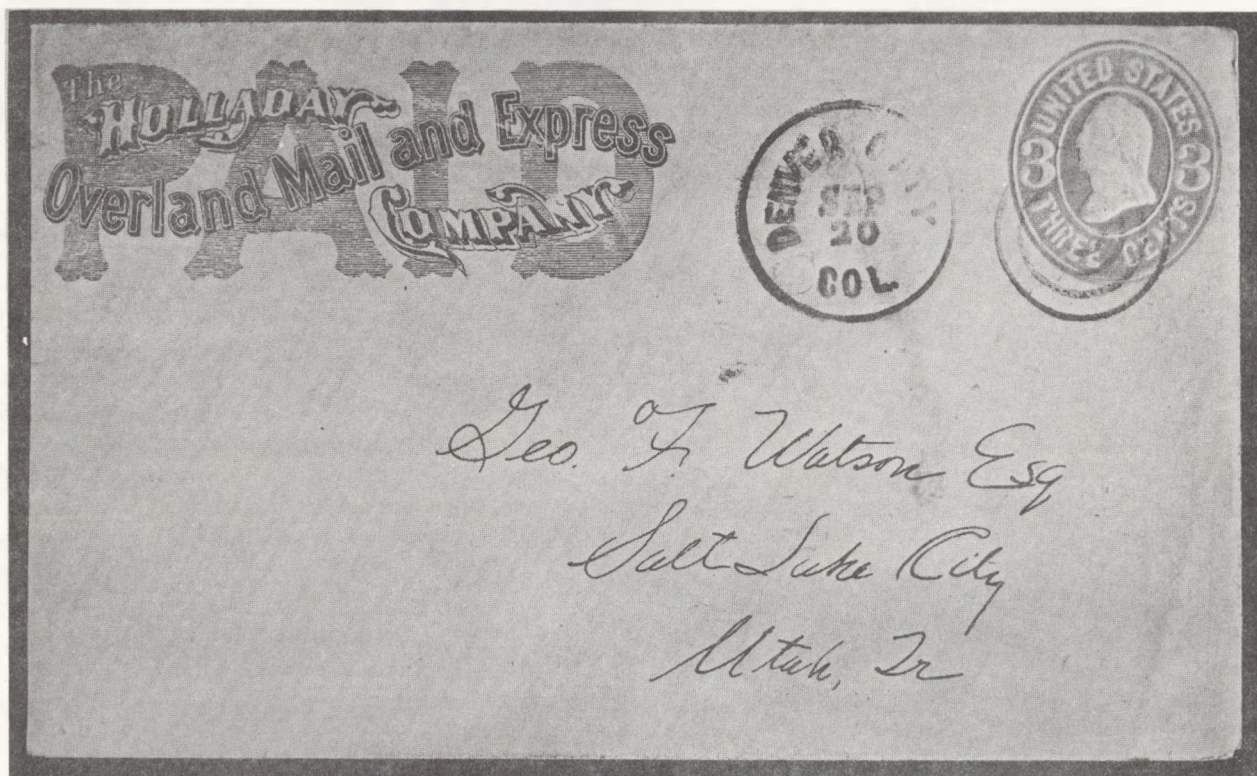
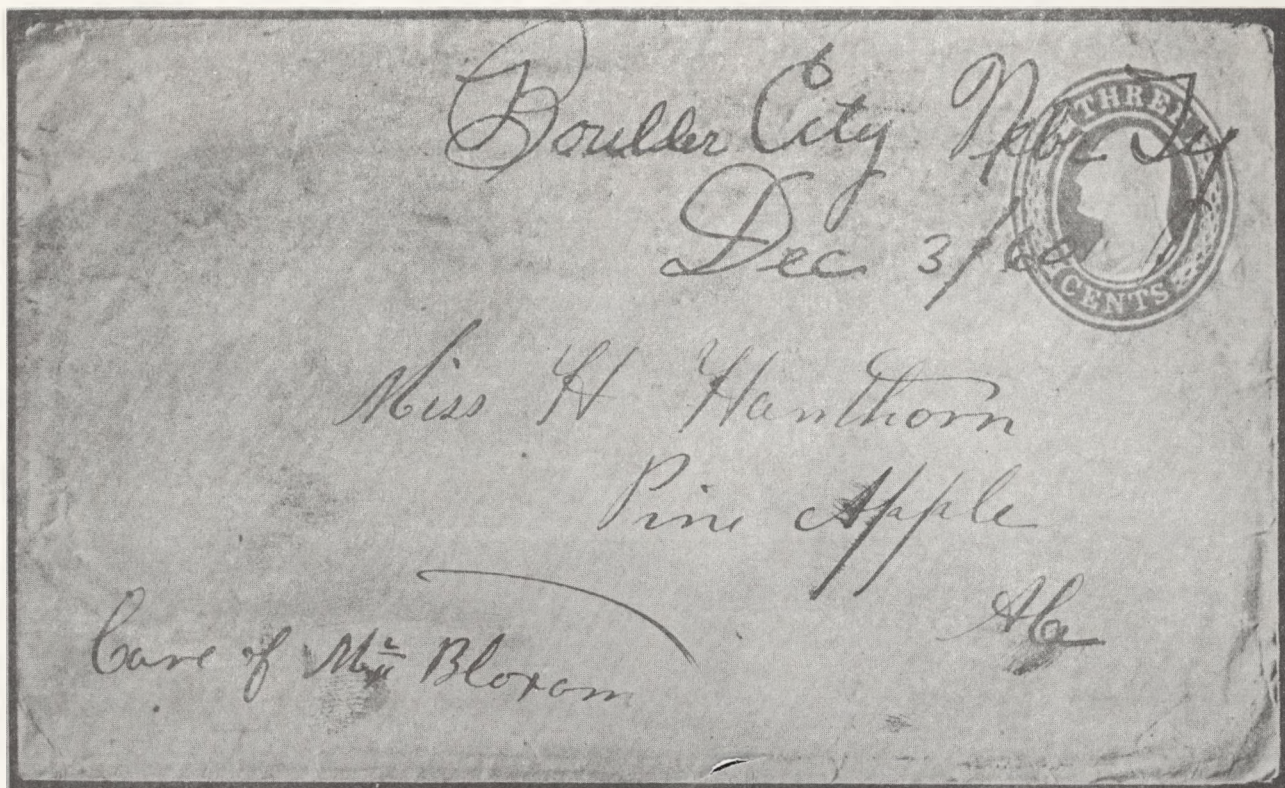
86. 25 diff. U.S. Artcraft, clean, Unadd. FDC's-MY CHOICE. \$5.00.
87. Same offer but U.N. FDC's. \$6.00.
88. 20 diff. U.N. unadd. FDC's-all on OFFICIAL GENEVA COVERS. \$6.00.
89. 10 of F-VF Gallatin plate blocks-Scott #1279. \$50.00. SCARCE.
90. 10 SHEETS-of 100 each-of the elusive Gallatins-especially in quantity. \$75.00

WE STILL HAVE A VERY LIMITED NUMBER OF THE LOVELY "CLASSIC UNITED STATES STAMPS 1845-1869" by Dr. Carroll Chase. We will send a copy FREE with any order from this list OVER \$25.00 accompanied with a request. (a request for the book!!)

ONLY EIGHT FREE COPIES AVAILABLE!!

We have just obtained one more brand new copy of Tracy Simpson's "U.S. POSTAL MARKINGS 1851-61" - \$50.00. (\$10 over last ad)

COLLECTORS CORNER (ASDA) BOX 26, TANNERSVILLE, N. Y. 12485



A PAIR OF FORGERIES ORIGINALLY FROM THE COLLECTION OF THE LATE H. PARKER JOHNSON (#1), BOULDER CITY, NEBR. TY. AND DENVER CITY, COLO. THE LATTER BEING STRUCK ON A GENUINE UNUSED HOLLIDAY OVERLAND MAIL AND EXPRESS COMPANY ENVELOPE. At present owned by David Jarrett (#640)