



Cancellation Club NEWS

VOL. 16, NO. 8

WHOLE NO. 178

FALL 1983

A NON-PROFIT ORGANIZATION DEVOTED TO THE RESEARCH OF U.S. POSTAL MARKINGS AND CANCELLATIONS

MORE...on the CHAMBERS POSTMARKING DEVICES

Dr. Frank Scheer responded to our request in the last issue for further information on the Chambers Mfg. Co., an early supplier of the steel dies and stamping devices for the Post Office Dept. With his letter, Dr. Scheer also included an interesting article from a Chambers catalog, circa 1900, which we show here. He also advised us he has developed a body of information on the Chambers Co. which he will eventually publish as a monograph. Members seeking further information on the Chambers Co. may contact Dr. Scheer at 18 East Rosemont Ave., Alexandria, VA 22301.

The following information is excerpted from the above mentioned article by Isabel Gough, which appeared in Vol. VI—No. 1 of the 1969 Bulletin of the Northumberland County Historical Society:

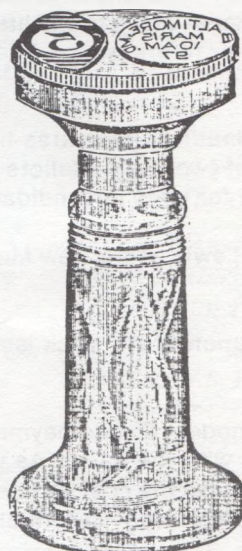
"For more than half a century the steel plates for postmarks with which postage stamps were cancelled and on which the dispatch date and place were imprinted were made in a rather secretive industry at Tucker's Point at Lodge (Virginia).

The industry had been founded in Washington, D.C. by Benjamin Chambers, Sr., the father of Benjamin Chambers, Jr., but the son, seeking seclusion, where the secrets of the trade were less likely to be divulged, moved the business to Northumberland County.

The elder Chambers had begun furnishing the United States Post Office Department with the postmarks for some years prior to the Civil War. In 1851 he had secured a patent on an improved steel stamp which enabled him to supply the government with a better product. However, during the War years he lost the contract. This was apparently due to Chambers, Sr. being too aged to take care of it and because Benjamin Chambers, Jr. was occupied as captain in the Second Pennsylvania Regiment.

During the War, the government was supplied with postmarks by the William Fairbanks Co. of Connecticut, whose product and services were not particularly satisfactory. In 1867 the Department again awarded the contract for the cancelling devices to Chambers.

Steel Postmarking and Canceling Stamps



— Manufactured By—

Henry B. Chambers & Bros.,

LODGE, VIRGINIA, U. S. A.

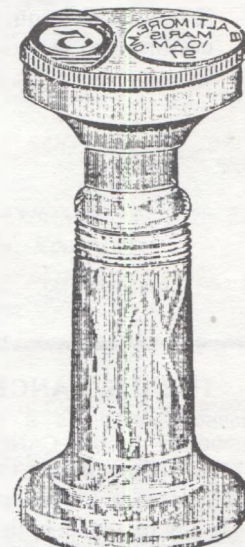
The Steel Hand Stamps shown in this folder are only a few of the styles we manufacture; they are the regulation Postmarking and Canceling Stamps used in all Post Offices of the United States and possessions.

We make Steel Postmarking and Canceling Stamps to conform to the regulations and fill the requirements of all foreign countries and will quote prices from drawings or samples upon application.

We also make a specialty of Steel type and dies for canceling machines and solicit correspondence from the manufacturers of same.

The material from which our product is made is the best obtainable for the purpose, all parts are hardened and tempered so as to stand hard usage, and the engraving and finish is as perfect as skilled engravers and mechanics can make it.

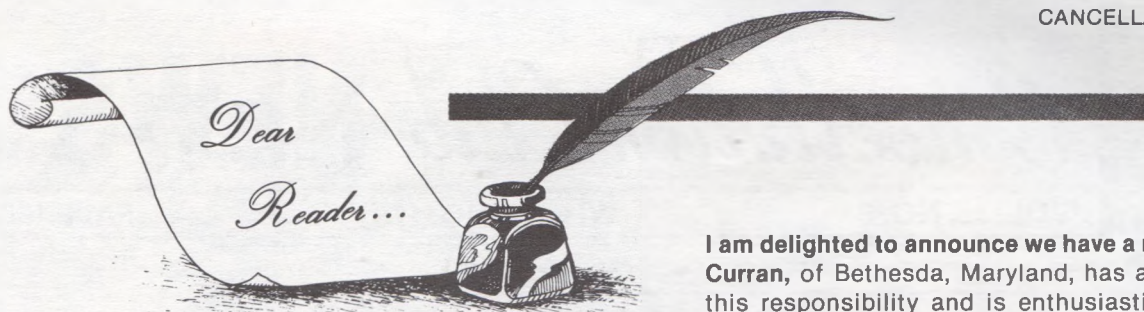
ITEM 165.



This is a combined marking and canceling stamp of steel of the best material and workmanship. The face die is removable with the hand by unscrewing from the handle. The dates are inserted from the under side of the die, being provided with shoulders to prevent their passing through the die.

This stamp is provided with steel type for months, days, years, hours and half-hours, so as to represent the time of mailing throughout the 24 hours and half-hours of the day and night.

Continued on page 113



I am delighted to announce we have a new editor! Roger Curran, of Bethesda, Maryland, has agreed to assume this responsibility and is enthusiastically working on his first (WINTER '84) issue, which he plans to publish in February. Roger is a Personnel Officer for the U.S. Public Health Service, and his philatelic interests in-

clude U.S. Stamps and Postal History of the 19th and early 20th Century.

There are enough problems involved with just the mechanics of putting out an issue, without the additional worry of having enough material to put into it, and this is where each of us should step in and shoulder our share of the responsibility by resolving to send Roger at least one little article, one cancel, one piece of information—to build up a backlog of interesting material for future issues. These 500 letters may be directed to Roger at **8803 Mead St., Bethesda, MD 20817.**

It's **voting time** again and the Nominating Committee has announced that all present officers of the club have agreed to serve an additional term of two years. Ballots with return envelopes addressed to our Treasurer are included with this issue, with a space for write-in candidates for alternative selections.

Our President has appointed **Evelyn Lewis** as the new Membership Chairman. She will also continue in her role as Awards Chairman.

I will continue to handle the distribution of the back issues and coordinate the research on 19th Century Fancy Cancels.

It's dues time again. They're still a modest \$6 and payment should be sent to our Treasurer, **George Lewis**, in the enclosed addressed envelope along with the ballot. As we've done in past years, your 1984 membership card is enclosed with your invoice/ballot, to save the cost of a separate individual mailing. This is your card, please **don't** return it unless you choose not to renew (Heaven forbid!).

I recently received a package containing an adorable miniature (9") oak mantle clock mounted on a marble base with a brass plate inscribed: "In appreciation, Alyce Evans, Editor, US Cancellation Club News, 1980-1983." I wish to thank the Officers and Members for this thoughtful gift, which occupies a special place on my desk, and I shall always cherish it. The past three years as editor have given me the opportunity to make many new friends from whom I have gained a great deal of philatelic knowledge. I will be traveling much of this next year and hope to meet many of you in person. I thank you for your support over the last three years, which I am sure will be extended to our new editor. With some of my new free time, I plan on becoming more involved with my personal 19th c fancy cancel research, to begin work on a postal history of West Virginia book (West Virginia, The First Hundred Years) and I will continue to welcome correspondence.

With best philatelic wishes,

Alyce

THE U.S. CANCELLATION CLUB NEWS

Published four times a year; February, May, August and November by the U.S. CANCELLATION CLUB and included with membership. Back issues as available. Prices on request.

Annual Dues: \$6.00 per year plus a one-time admission fee of \$1.00.

Address Library Inquiries to:

William H. Bauer, Box 1449, Spring, TX 77373

Address Sales Circuit Inquiries to:

P.O. Box 83, Winnetka, IL 60093

Address all other communications to:

Alyce Evans, Editor, Box 286, Bonsall, CA 92003

U.S.C.C. OFFICERS

William C. Walker, 105 Elizabeth St., Clearfield, PA 16830 President
 Gary A. McIntyre, 904 Cheyenne Dr., Ft. Collins, CO 80525 1st Vice Pres.
 C.W. Bert Christian, 2287-D Via Puerta, Laguna Hills, CA 92653 2nd Vice Pres.
 George H. Lewis, P.O. Box 545, Clearfield, PA 16830 Secretary-Treasurer
 Herman Herst, Jr., P.O. Box 1583, Boca Raton, FL 33432 Governor at Large

ADVERTISING RATES

Full Page \$40.00
 Half Page \$25.00
 Quarter Page \$15.00
 Column Inch \$4.00

CONTENTS OF THE U.S. CANCELLATION CLUB LIBRARY

January 1, 1984

The following is a list of those items — books, journals, auction catalogues — that comprise the Library of the U.S. Cancellation Club. Any member of the Society may borrow from this Library upon request. We do ask that for each request you pay a nominal charge of 50 cents (Mint U.S. stamps are acceptable) to help defray the costs of postage and, of course, pay the return postage.

Books will be loaned for a period of 30 days, and can be requested by writing to: William H. Bauer, USCC Librarian, Box 1449, Spring, TX 77373.

The Librarian openly solicits additional contributions for the Library. Such contributions should be related to postal markings and cancellations or to postal history, in keeping with the purposes of the organization.

BOOKS AND PAMPHLETS

Index

CITY CROSS-INDEX FOR HERST-SAMPSON FANCY CANCEL BOOK, by Thomas E. Stanton, 1983.

INDEX OF ELLIPSE CANCELS, by Warren P. Tingley, 1981. Code form of ellipses with figure or letter centers taken from the Gilbert M. Burr article.

THE U.S. CANCELLATION INDEX by Chester M. Smith, Jr., and Joseph D. Hahn (U.S. Cancellation Club News, Volumes 1-10)

Postal Markings

19th CENTURY UNITED STATES FANCY CANCELLATIONS, 1951 second edition revised, by Herman Herst, Jr. (Michel Zareski)

20th CENTURY UNITED STATES FANCY CANCELLATIONS (With 1967 Pricing Guide by R. L. Markovits) 1952, by Foster W. Loso and Heyliger de Windt

A CATALOG OF RAILROAD COMPANY, STREET RAILWAY COMPANY, & EXPRESS COMPANY PRINTED CANCELLATIONS ON THE 1898 U.S. REVENUES, edited by Richard D. Fullerton

A CHECKLIST OF STREET RAILWAY POST OFFICES 1891-1929, 1961, by Robert A. Truax

A SURVEY OF U.S. MACHINE POSTMARKS, 1875-1925, by R.F. Hanmer, 1981.

BARRY MACHINE CANCELS, by Eugene M. Funk & Arthur H. Bond, USCC 1981 reprint (includes Supplements 1 and 2).

BILLIG'S PHILATELIC HANDBOOK, Volume 33, 19th CENTURY UNITED STATES FANCY CANCELLATIONS, 1972 revised edition, by Herst-Sampson

CYCLOPEDIA OF U.S. POSTMARKS & POSTAL HISTORY, by Delf Norona, 1975 reprint.

DESCRIPTIVE CATALOGUE OF THE LEAVITT MACHINE CANCELLATIONS, by Frank B. Stratton

ENCYCLOPEDIA OF R.F.D. CANCELS, by Harold E. Richow, 1983.

FLAG CANCEL ENCYCLOPEDIA, 1955 edition, by Frederick Langford

HELP IN IDENTIFYING ELLIPSE CANCELS ON TWO CENT RED BROWNS, by Warren P. Tingley, 1981. 6p.

INTERNATIONAL MACHINE CANCELS 1888 to 1910, by Arthur H. Bond

METER STAMP PRICE LIST, 1955 first edition, by Walter M. Swan

OLD BAY LINE (BALTIMORE STEAM PACKET COMPANY) MAIL, 1965, by Jesse G. Johnson

POSTAL MARKINGS 1934: VOL. III, nos. 9, 10, 11, 12.

1935: VOL. IV, nos. 1, 2, 3, 4, 5, 6.

POSTAL MARKINGS OF THE UNITED STATES 1847-1851, 1938, by Manuel Hahn

PRICE PREDICTIONS — Volumes One & Two, 1947, by Joseph Ensign Granville

RAILROAD POSTMARKS OF THE UNITED STATES 1861-1886, 1968, by Charles L. Towle and Henry A. Meyer

RAPID CANCELLING MACHINES MANUFACTURERS AND IMPRESSIONS, 1946, by K. F. and V. M. Olson

A REGISTER OF SHIPS AND POSTMARKS OF THE U.S. NAVY, 1946, by Joseph A. Frayne and Deane C. Bartley

Simpson's U.S. POSTAL MARKINGS — 1851-1861, by Thomas J. Alexander (1979 edition)

STANDARDIZED HAND STAMP CANCELLATIONS ON THE BANK NOTE ISSUES, by Gilbert M. Burr, 1935.

THE FIRST HUNDRED YEARS OF U.S. TERRITORIAL POSTMARKS, 1787-1887, by Dr. Carrol Chase & Richard McP. Cabeen, 1980 reprint.

THE INTERNATIONAL POSTAL SUPPLY CO. OF NEW YORK, CATALOG OF MACHINE MARKINGS, 1888-1910, by Reg. Morris, 1982.

THE MAIL OF THE A.E.F. — AMERICAN EXPEDITIONARY FORCES 1917-1921, 1940, by Hennen M. Sanford

THE TALE OF THE KICKING MULE, 1949, by Lee H. Cornell

THE PAID MARKINGS ON THE 3¢ U.S. STAMP OF 1861, 1955, by George W. Linn

THE POSTAL HISTORIANS NOTE BOOK, Part I, 1974, by K. F. and V. M. Olson

THE TIME MARKING CO.—B.F. CUMMINS CO., by Louis Geschwindner, Reg Morris, & John W. Koontz, 1982.

TROLLEY CAR MAIL SERVICE IN PHILADELPHIA, 1971, by Wylie H. Flack and Robert J. Stets

UNITED STATES CANCELLATIONS 1845-1869, by Hubert C. Skinner and Amos Eno

UNITED STATES POSTAL SLOGAN CANCEL CATALOG, 1963 edition, by Moe Luff

UNITED STATES STAMPLESS COVER CATALOG, 1936 edition. Edited by Harry M. Konwiser

UNITED STATES TERRITORIAL POSTMARK CATALOG, 1950, by E. N. Sampson

THE WATERBURY CANCELLATIONS 1865-1890, by Paul C. Rohloff

WESTERN DOANES, by Richard W. Helbock, 1982.

Postal Markings — By Specific States

- ARIZONA** ARIZONA TERRITORIAL POST-MARK CATALOG, 1972, by Sheldon H. Dike
- CALIFORNIA** POSTMARKS OF RAILWAY POST OFFICES AND ROUTE AGENTS IN CALIFORNIA 1973, by Clarence D. Brenner
- COLORADO** COLORADO POSTAL HISTORY — SOME EARLY RAILWAY POSTAL ROUTES, 1974, by John H. Willard
- CONNECTICUT** CONNECTICUT POST OFFICES & POSTMARKS, by Arthur J. Warmesley, 1972.
- DAKOTA** POST OFFICES AND POSTMARKS OF DAKOTA TERRITORY, 1973, by George H. Phillips
- FLORIDA** FLORIDA POSTAL HISTORY AND POSTAL MARKINGS DURING THE STAMPLESS PERIOD, 1957, by Mrs. Harold Major Pickett, Kenneth L. Rice, and Henry M. Spelman III
- INDIANA** THE POST OFFICES OF SOUTHWESTERN INDIANA, 1956, *Postal History Bulletin No. 4*, by the Evansville Stamp Club, Evansville, Indiana
- THE POSTAL HISTORY OF INDIANA, VOL. I & II, by David Baker, 1976.
- SOUTHWESTERN INDIANA POSTAL HISTORY, 1948-1949, *Bulletins 1, 2 & 3*, Evansville Stamp Club, Evansville, Indiana
- KANSAS** KANSAS POST OFFICES, MAY 29, 1828-AUGUST 3, 1961, by Robert W. Baughman, 1961.
- KENTUCKY** POSTMARKED KENTUCKY — A POSTAL HISTORY OF THE COMMONWEALTH OF KENTUCKY FROM 1792 to 1900, by Alan T. Atkins
- LOUISIANA** THE GREAT MAIL, 1949, by Leonard V. Huber and Clarence A. Wagner
- THE 1847 ISSUE IN LOUISIANA AND THE CITY OF NEW ORLEANS, by Hubert C. Skinner (Article in the NOPEX '75 Exhibit Program)
- LOUISIANA POSTAL HISTORY, A SPANISH COLONIAL COVER: NOVA IBERIA, by Erin R. Gunter (Article in the NOPEX '75 Exhibit Program)
- NEW ORLEANS POSTAL HISTORY — SPANISH COLONIAL PERIOD 1762-1803, by Hubert C. Skinner (Article in the NOPEX '73 Exhibit Program)
- NEW ORLEANS POSTAL MARKINGS (Illustration from "The Great Mail")
- POSTAL FACILITIES AND POST-MARKS, DISTRICT OF LOUISIANA, THE TERRITORY OF LOUISIANA, AND THE TERRITORY OF MISSOURI, 1804-1821, 1960 revised, by C. Corwith Wagner
- PRE-TERRITORIAL AND ORLEANS TERRITORY TOWN MARKINGS by Hubert C. Skinner (Article in the NOPEX '72 Exhibit Program)
- MAINE** MAINE POSTAL HISTORY AND POSTMARKS, 1943, by Sterling T. Dow
- MASSACHUSETTS** BOSTON POSTMARKS OF 1890, 1949 (1974 *Quarterman* reprint), by Maurice C. Blake and Wilbur W. Davis
- THE POST OFFICES OF MASSACHUSETTS, by Elwyn J. Doubleday
- MICHIGAN** MICHIGAN, MICHIGAN, 1958, by Milton L. Greenebaum
- MISSISSIPPI** THE POSTAL HISTORY OF MISSISSIPPI, STAMPLESS PERIOD 1799-1860, 1969, by Bruce C. Oakley, Jr.
- A POSTAL HISTORY OF MISSISSIPPI, STAMPLESS PERIOD, 1799-1860, VOL. II, by Bruce C. Oakley, Jr., 1980.
- MONTANA** MONTANA TERRITORIAL POST OFFICES, by Harry L. Fine (Article in the *American Philatelist*, Vol. 89 #9)
- NEW HAMPSHIRE** SCARCITY GUIDE TO NEW HAMPSHIRE POST OFFICES, by E. J. Doubleday and H. B. Stevens
- NEW JERSEY** DISCONTINUED POST OFFICES OF NEW JERSEY, 1975, by Stanley E. Griffith
- NEW MEXICO** NEW MEXICO TERRITORIAL POST-MARK CATALOGUE, by Dr. Sheldon H. Dike, 1982.
- NEW YORK** THE NEW YORK FOREIGN MAIL CANCELLATIONS 1870-1876, 1942, by Edwin Milliken
- NEW YORK FOREIGN MAIL CANCELLATIONS, 1968, by Arthur Van Vlissingen and Morrison Waud
- NEW YORK POSTAL HISTORY: THE POST OFFICES & FIRST POSTMASTERS FROM 1775-1980, by John L. Kay & Chester M. Smith, Jr., 1982.
- OKLAHOMA** INDIAN TERRITORY MAIL, 1966, by Gaspare Signorelli and Tom J. Caldwell
- OREGON** OREGON POST OFFICES 1847-1982, by Richard W. Helbock, 1982.
- RHODE ISLAND** PROVIDENCE RHODE ISLAND — POSTAL MARKINGS AND CANCELLATIONS BEFORE TWENTIETH CENTURY, 1959-1960 (reprints from *U.S. Cancellation NEWS*), by John H. Smith
- RHODE ISLAND POST OFFICES—REVISED LISTING AND SCARCITY RATINGS, by Wm. C. Hillman, 1983.

SOUTH DAKOTA *THE POST OFFICES OF SOUTH DAKOTA 1861-1930*, 1975, by George H. Phillips

TEXAS *TEXAS POSTAL HISTORY HANDBOOK*, by Charles Deaton, 1981.

VERMONT *A SCARCITY AND VALUE RATING OF THE POSTMARKS AND CANCELLATIONS FROM THE DISCONTINUED POST OFFICES OF VERMONT*, by Micahel J. McMorrow
UPDATE:
SCARCITY AND VALUE RATING OF VERMONT DISCONTINUED POST OFFICES, by Vt. Phil. Society, 1982.

WISCONSIN *19th CENTURY FANCY CANCELLATIONS OF WISCONSIN*, by Wisc. Postal History Society, 1958.

EARLY WISCONSIN RAILROAD POSTMARKS, May 1950, by Roland L. Hustis (Bulletin #4 of Wisconsin Federation of Stamp Clubs)

FLAG CANCELLATIONS OF WISCONSIN POST OFFICES, May 1948, by Kenneth F. Olson (Bulletin #3 of Wisconsin Federation of Stamp Clubs)

A LIST OF ALL KNOWN POST OFFICES IN THE TERRITORY AND STATE OF WISCONSIN FROM THE FIRST P.O. ESTABLISHED DECEMBER 1821 TO OCTOBER 1917, 1948, by the Wisconsin Postal History Group

STRAIGHT LINE POSTMARKS OF WISCONSIN, May 1946, by Paul H. Segnitz and Ray Van Handel (Bulletin #1 of the Wisconsin Federation of Stamp Clubs)

UNITED STATES TERRITORIAL POSTMARK CATALOG — WISCONSIN STAMPLESS COVER SECTION, 1950, by E. N. Sampson

Confederate States

CONFEDERATE HANDSTAMP PAIDS, by Morris Everett, 1981.

CONFEDERATE PATRIOTIC COVERS, INCLUDING A CHECK LIST OF ALL KNOWN DESIGNS, 1943, by Van Dyke MacBride

SOME NOTES ON THE POSTAL LEGISLATION OF THE CONFEDERATE STATES OF AMERICA 1861-1865, POSTAL RATES, EARLIEST KNOWN DATES OF USE OF THE STAMPS OF THE GENERAL ISSUES 1946, Stanley B. Ashbrook

CRAZY CONFEDERATES OR BOGUS ADHESIVES, 1969, from "Confederate Philatelist," Vol. 13, No. 7, by H. F. Rooke

Stamps Of The United States

THE GENERAL ISSUES OF UNITED STATES STAMPS, 1909, by Eustace B. Power

THE UNITED STATES COLUMBIAN ISSUE, 1893, 1942, by A. A. Lauzon

THE UNITED STATES TWO CENT RED BROWN OF 1883-1887, (Two Volumes) 1970, by Edward L. Willard

NOTES ON THE GRILLED ISSUES OF THE UNITED STATES, 1940, compiled by Lester G. Brookman

TEN DECADES AGO 1840-1850 — A STUDY OF THE WORK OF RAWDON, WRIGHT, HATCH, AND EDSON OF NEW YORK CITY, 1949, by Winthrop S. Boggs

United States Postal Stationery

UNITED STATES STAMPED ENVELOPES — ILLUSTRATED AND IDENTIFIED, 1939

UNITED STATES POSTAL CARD CATALOG, 1965 edition
THE POSTAL STATIONERY OF THE UNITED STATES POSSESSIONS AND ADMINISTRATIVE AREAS, 1971 edition

Miscellaneous Subjects

AMERICAN AIR MAIL CATALOGUE — Volume 1, 1947 edition, 1963 reprint, *Volume 2*, 1950 edition, 1963 reprint, *Volume 3*, 1959 supplement

NASSAU STREET, 1960, by Herman Herst

THE NOBLE OFFICIAL CATALOG OF UNITED STATES BUREAU PRECANCELS, 48th Edition, January 1966, by G. C. Mynchenberg and Horace Q. Trout

THE PICTURE POSTCARD & ITS ORIGINS, 1966, by Frank Staff

PONY EXPRESS, 1936, by Edward S. Knapp

SHIPS OF THE U.S. NAVY LOST AND DAMAGED IN U.S. POSTAL GUIDE, JULY 1947, PART I: DOMESTIC.

WORLD WAR II WITH KNOWN POSTMARKS, 1946, by Joseph A. Frayne and Dean C. Bartley

Canada

THE CANADIAN FLAG CANCELLATION HANDBOOK 1896-1973, 1973, by Ed Richardson

AMERICAN PHILATELIC CONGRESS BOOKS

FIFTEENTH AMERICAN PHILATELIC CONGRESS BOOK, 1949

SIXTEENTH AMERICAN PHILATELIC CONGRESS BOOK, 1950

SEVENTEENTH AMERICAN PHILATELIC CONGRESS BOOK, 1951

EIGHTEENTH AMERICAN PHILATELIC CONGRESS BOOK, 1952

NINETEENTH AMERICAN PHILATELIC CONGRESS BOOK, 1953

AUCTION CATALOGUES

THE EDWARD S. KNAPP COLLECTION — PHILATELIC AMERICANA, Part II, Parke-Bernet Galleries, November 3-8, 1941

THE GEORGE W. HALE COLLECTION OF UNITED STATES FANCY CANCELLATIONS, Robert A. Siegel Sale #171, April 29

THE OUTSTANDING COLLECTION OF U.S. TERRITORIAL COVERS FORMED BY HERBERT T. DARDINGTON, Samuel C. Paige, December 7, 1956

UNITED STATES STAMPS, COVERS, SPECIALIZED CANCELLATIONS, John A. Fox, November 14, 15, 16, 1960

UNITED STATES SPECIALIZED COLLECTION: 1847 ISSUE, 12¢ BLACK 1851-1857 ISSUES, 3¢ GREEN COLLECTION (WILLIAM R. STEWART), Robert A. Siegel #203, October 7, 1957

CANCELLATIONS AND COVERS OF THE UNITED STATES #6 1861 ISSUE (B. H. HANDY), The Collectors Shop, Sale #110, November 12, 1953

SOCIETY JOURNALS AND PUBLICATIONS

BADGER POSTAL HISTORY—Journal of the Wisconsin PHS, Aug 1981 to date.

THE BUREAU SPECIALIST — BUREAU ISSUES ASSN.

<i>Volume 22, 1951 #1-12, Bound</i>	<i>Volume 36, 1965 #1-12, Loose</i>
<i>Volume 23, 1952 #1-12, Bound</i>	<i>Volume 37, 1966 #1-12, Loose</i>
<i>Volume 24, 1952 #1-12, Bound</i>	<i>Volume 38, 1967 #1-12, Loose</i>
<i>Volume 28, 1957 #9</i>	<i>Volume 39, 1968 #1-12, Loose</i>
<i>Volume 29, 1958 #6-12, Loose</i>	<i>Volume 40, 1969 #1-12, Loose</i>
<i>Volume 30, 1959 #1-12, Loose</i>	<i>Volume 43, 1972 #12</i>
<i>Volume 31, 1960 #1-12, Loose</i>	<i>Volume 45, 1974 #1-12, Loose</i>
<i>Volume 32, 1961 #1-12, Loose</i>	<i>Volume 46, 1975 #1-12, Loose</i>
<i>Volume 33, 1962 #1-12, Loose</i>	<i>Volume 47, 1976 #1-12, Loose</i>
<i>Volume 34, 1963 #1-12, Loose</i>	<i>Volume 48, 1977 #1-12, Loose</i>
<i>Volume 35, 1964 #1-12, Loose</i>	<i>Volume 49, 1978 #1-12, Loose</i>

COMPEX — 1973 Exhibition Catalog

FLAG CANCELLATIONS—Journal of the Flag Cancel Society, April 1982 to date.

MACHINE CANCEL FORUM

<i>Book One</i>	<i>Issues 1-33 (1974-1976)</i>
<i>Book Two</i>	<i>Issues 34-56 (1977-1978)</i>
<i>Book Three</i>	<i>Issues 57-78 (1979-1980)</i>

NJPH — Journal of the New Jersey Postal History Society

<i>Volume 4, 1976</i>	<i>#2, 3, 5</i>
<i>Volume 5, 1977</i>	<i>#1, 2</i>
<i>Volume 6, 1978</i>	<i>#3, 4, 5</i>

NOPEX EXHIBIT PROGRAMS (Crescent City Stamp Club, New Orleans)

1972
1973
1974
1975

OHIO POSTAL HISTORY JOURNAL—published by the Ohio PHS, April 1982 to date.

PENNSYLVANIA POSTAL HISTORIAN—Journal of the Penn. PHS, Jan-Feb 1983 to date.

POSTAL HISTORIAN

Volume 1, 1977 #2

POSTAL HISTORY U.S.A.

(J-B Publishing Co.)

Volume 1 #3
Volume 4 #1, 4
Volume 5 #1
Mar 1983 to date.

POSTAL STATIONERY — Journal of the United Postal Stationery Society

<i>Volume 16, 1974</i>	<i>#1, 2, 3, 4, 5, 6</i>
<i>Volume 17, 1975</i>	<i>#1, 2, 3, 4, 5, 6</i>
<i>Volume 18, 1976</i>	<i>#1, 2, 3, 4, 5, 6</i>
<i>Volume 19, 1977</i>	<i>#1, 2, 3, 4, 5, 6</i>
<i>Volume 20, 1978</i>	<i>#1, 2, 3, 4, 5, 6</i>

SHIPS AND POSTMARKS OF THE U.S. NAVY

Volume 1 #1, 2, 3, 4, 5, 6, 7, 8, 9, 10, 11

THE DIXIE PHILATELIST—Journal of the Southern Philatelic Federation, Spring 1981 to date.

THE PENINSULAR PHILATELIST *Federated Stamp Clubs of the Michigan Area*

<i>Volume 4</i>	<i>#3, 4</i>
<i>Volume 5</i>	<i>#1, 2, 3</i>
<i>Volume 6</i>	<i>#1, 2, 3, 4, 5, 6</i>
<i>Volume 7</i>	<i>#1, 2, 3, 4, 5, 6</i>
<i>Volume 8</i>	<i>#1, 2, 3, 4, 5, 6</i>
<i>Volume 9</i>	<i>#1, 2, 3, 4</i>
<i>Volume 10</i>	<i>#5</i>

THE PHILATELIC FOUNDATION BULLETIN, published by the Phil. Foundation, Sep 1983 to date.

THE POSTAL HISTORIAN — A Journal Devoted to the Postal and Philatelic History of Northern California, Southwestern Oregon, and Northwestern Nevada

<i>Volume 1, 1967</i>	<i>#1, 2, 3, 4, 5, 6</i>
<i>Volume 2, 1968</i>	<i>#1, 2, 3, 4, 5, 6</i>
<i>Volume 3, 1969</i>	<i>#1, 2, 3, 4, 5, 6</i>
<i>Volume 4, 1970</i>	<i>#1, 2, 3, 4, 5, 6</i>
<i>Volume 5, 1971</i>	<i>#1, 2, 3, 4, 5, 6</i>

THE VERMONT PHILATELIST—Journal of the Vermont PHS, May 1956 to date, with an Index covering the period to May 1971.

U.S. CANCELLATION CLUB NEWS — U.S. Cancellation Club
All issues are available, although many early issues are copies, not originals. The U.S.C.C. News is loaned in units as follows:

<i>Volumes 1 & 2</i>	<i>1951-1955</i>
<i>Volumes 3 & 4</i>	<i>1956-1959</i>
<i>Volumes 5 & 6</i>	<i>1960-1963</i>
<i>Volumes 7 & 8</i>	<i>1964-1967</i>
<i>Volumes 9 & 10</i>	<i>1968-1971</i>
<i>Volumes 11 & 12</i>	<i>1972-1977</i>
<i>Volumes 13 & 14</i>	<i>1978-1979</i>
<i>Volumes 15 & 16</i>	<i>1980-1983</i>

Benjamin Chambers, Sr. died in 1871, and Ben, Jr. came to Northumberland about 1877. He found the Lodge area ideal for his purposes, as it was near Washington and yet remote and hard to get to except by water. The labor supply was adequate and economical, and he had no trouble training skilled machinists locally.

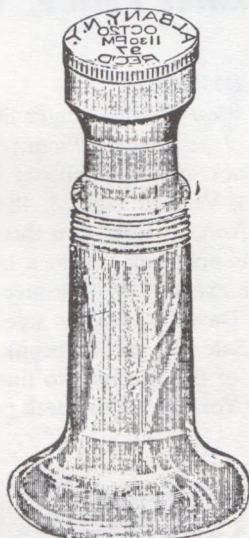
Hugh Ferguson, in a Chambers article published in the Northern Neck News stated, "The manufacturing process, especially when compared to present-day automation, was incredibly painstaking. By hand, working with an assortment of some thirty or forty chisels, the 'cutters' could carve each letter of the town and state out of a blank steel plate. Or rather, they would carve away everything but the letters, leaving them stand out in relief."

Willie B. Sayre of Haynesville, who put in a score of years of work at the Northumberland County plant, and whose father, Columbus Sayre, was employed there 45 years, recalled that during World War I, South America switched from buying hand stamps or postmarks from Germany to the Chambers plant. One order alone was for 900 stamps, each to bear the name of a different town and many with different countries. The order came in when the plant was already trying to fill a heavy volume of armed forces requests for postmarks. In addition, many of the South America plates were required to have accents over the words. The press of work, however, led the Chambers company to ignore the accents, much to South American consternation. The whole shipment was returned for the accents to be added.

The Chambers' plant began cutting plates for cancelling machines when they came into general use. At Benjamin Chambers' death in 1908 the plant passed to his son, Henry, who succumbed in a hunting accident in 1927 and Henry Chambers, Jr. took over the company. About the time of the death of Henry Sr., rubber stamps were beginning to make inroads on this family business, which had enjoyed a virtual monopoly for well over fifty years. Skill and economy could not overcome the advantage of an inherently cheap material which could be easily and quickly molded to the desired form. The arrival of the depression years signalled the end of this important local industry.

In 1932 the company went out of existence and later the building which housed it was torn down. Sayre, however, for a number of years afterward, continued to cut plates for cancelling machines, in response to orders from Postal Supply Companies, at his home in Haynesville."

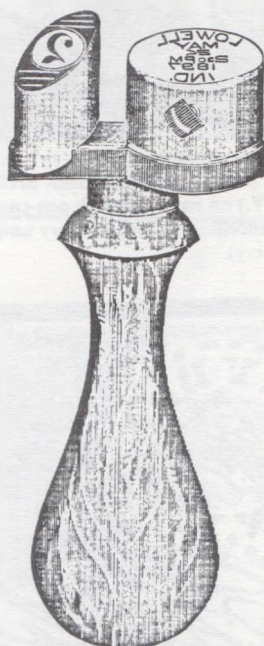
ITEM 165 B



This stamp is for stamping letters on the back to show the time of their arrival at the office to which they are addressed, but can be used for many other purposes and can have any name or number of letters desired for which there is space.

The face die is removable the same as in Item 165, the Steel type being inserted in the same manner for showing day, month, year, hour and half-hour.

ITEM 166.



This is a combined Postmarking and Canceling Stamp and can be furnished with type for day, month and year only or hour and half-hour if desired.

It has a solid die with Steel Canceler as shown in cut. The steel type for dates are set in a mortice in the center of the die confined by set screw. The type are packed in a neat tin box with socket key for removing set screw, and the whole securely packed for shipment.

ITEM 169.



Item 169 is for the small Post Office. It is a solid steel die, with mortice in center of the face to receive the type and a set screw in its side to confine them. It is provided with steel type for dates for month, day and year and socket key for unscrewing set screw. It will be accompanied with separate wooden canceling stamp consisting of a wooden handle with rings turned on the end with which to cancel the postage stamp.

The steel type are packed in a neat tin box and the whole securely packed for shipment.

ITEM 174.



The stamp shown on opposite page is a solid oval die of steel, with the name of the post office cut on its face, surrounded by a rim oval in form, and is used to stamp newspapers, periodicals and such mail matter as does not require to be dated and canceled.

STENCIL POSTMARKS AND OTHER STENCILED MARKINGS ASSOCIATED WITH THE U.S. MAILS: Stampless Period Through The Banknote Period, Part 5

by Frank Mandel

NEW YORK

SHERWOODS.CORNERS./N.Y.

Characteristics: Circular, outer line comprised of 9 dots alternating with 9 scalloped dashes, "N.Y." at center of design; 35mm.; Colors: grayish green, lilac and blue. **Use:** Stampless, 1841 (A.S.C.C.) (?); Verified uses: 1845-46. **Notes:** Perhaps the second most "common" stencil postmark if all colors are counted. These colors are often quite rich and bright. The A.S.C.C. lists a "brown" variety, but I strongly suspect that this may be an "oxidized" lilac. There is also a grayish green variety which may have turned to a slate grey color in a few examples. I also suspect that the 1841 listing in the A.S.C.C. may be too early. This postmark (previously illustrated as Figure 1 in this article) was reduced to produce the semi-circular postmark reading "SHERWOODS N.Y."

SHERWOODS/N.Y.

Characteristics: Arc with "N.Y." in same position as above, outer line comprised of 5 dots alternating with 4 scalloped dashes: 34x17mm.; Colors: grayish green, deep green, blue. **Use:** Stampless: 1846 and later; #1: exact year of use not known. **Notes:** This postmark, occasioned by the change in the name of this post office, is decidedly scarcer than the full postmark. I have seen four examples, Figure 17 illustrates one of these, a remarkable use with a pre-cancelled #1 (courtesy Elwyn J. Doubleday Jr., ex-Lounsbery). This is certainly one of the few 1847 items associated with stencil postmarks; another example is illustrated as Lot 3321 in the Edwin Mayer Sale of Feb. 17, 1967 (H.R. Harmer); and even another example recently surfaced as Lot 39 in the Robert A. Siegel auction of Apr. 12, 1983 (Sale #616). This postmark was produced by covering over or removing the lower part of the original stencil device. Considering the relative scarcity of the marking, it does not seem to have been a particularly successful operation.

STAMFORD, N.Y.

Characteristics: Circular, outer line comprised of 9 segments; 29mm.; Colors: brown, black. **Use:** Stampless: 1834-37 (A.S.C.C.); Verified Jan. 28, 1837, Apr. 10, 1837. **Notes:** I have seen three examples of this postmark, all in a brownish color. One example is illustrated as Lot 131 in the David G. Phillips sale of Feb. 24, 1979 (Sale #17, ex-Sampson); the resemblance of this marking to those from other New York towns has been previously noted.

STONY BROOK N.Y.

Characteristics: Circular, outer line comprised of 11 dots alternating with 11 scalloped dashes; 30mm.; Colors: blackish brown (known with blue ms. date), blue (known with blue ms. date and handstamp "PAID"). **Use:** Stampless: 1843-45 (A.S.C.C.); Verified: (blue): Nov. 14, 1841, Aug. 18, 1844, June 13, 184(?); (blackish brown): Aug. 7, 1841. **Notes:** I have seen four examples, but at least five exist (all colors). One lovely example is illustrated here as Figure 18 (courtesy David L. Jarrett).

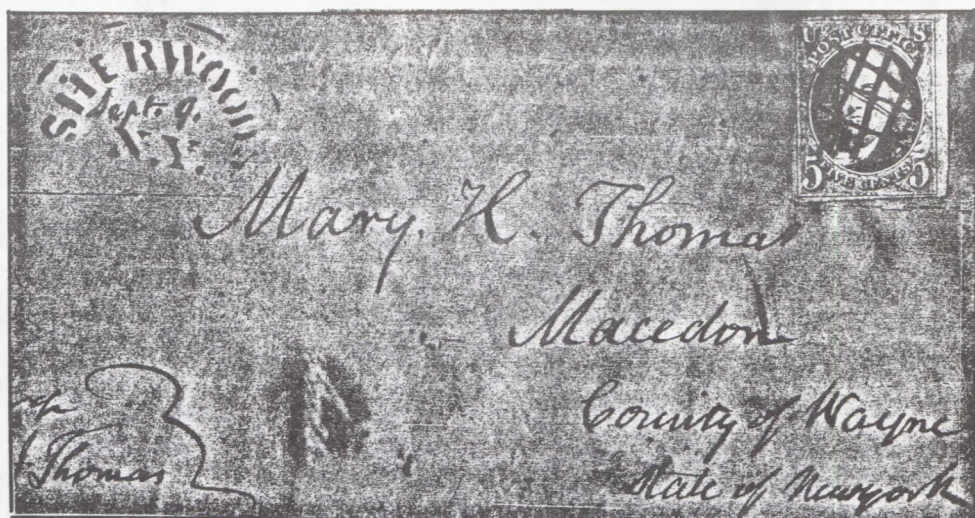


Figure 17. Stencil postmark from SHERWOODS, N.Y. (altered from SHERWOODS CORNERS, N.Y.) on envelope with pen-cancelled 5¢ 1847. Color: blue; manuscript date "Sept. 9" and pen-cancelling are black; Very unusual combination! (Courtesy Elwyn J. Doubleday, Jr., ex-Lounsbery)



Figure 18. Stencil postmark from STONY BROOK, N.Y. on folded letter, dated Nov. 14, 1841. Color: blue; manuscript date and "10" are also blue, as is the handstamped "PAID." A real gem! (Courtesy David L. Jarrett)

Continued on next page

UPPER JAY, N.Y.

Characteristics: Circular, outer line comprised of over 16 dots; 31mm.; black, ties stamp which is also pen-cancelled. **Use:** #65, exact year not known. **Notes:** At least three examples of this postmark exist.

One (Figure 19) is on the flap side of an envelope originating in Albany, N.Y. bearing 3 copies of #65, and which is addressed to Miss Lucy J. Wells, obviously a relative of the postmaster at Upper Jay, Benjamin Wells. This gentleman, in addition to using his stencil postmark, brushed on two "strikes" of his name, also in stencil (64x6½mm.). The ink of the name is very thickly applied, and has an old metallic sheen. Wouldn't it be nice if he used this name stencil to create a stenciled free frank? Keep looking!

URBANA, N.Y.

Characteristics: 26mm. double circle; black with stencil type PAID and 5. **Use:** Stampless, 1847-48 (A.S.C.C.). **Notes:** This one is a bit of a mystery. It has been listed in the A.S.C.C. since 1952, but I have never encountered one, and it has not been seen by that celebrated student, Calvet M. Hahn. However, Type 1 of the well-documented URBANA, MD. stencil is a small double circle, and is associated with stencil type "PAID" and "5" markings. It was a contemporary of this alleged marking. Odd coincidence, or as I am inclined to suspect, could someone have misread something here? I'd love to know for sure.

WEST DAY, N.Y.

Characteristics: Circular, outer line comprised of approximately 69 small dots; 31mm.; black. **Use:** 1851-57 issue, exact use and year not known; Stampless (?). **Notes:** This listing is based on Tracing #275 in U.S.P.M. It is also listed in A.S.C.C., but at least one serious student has questioned its existence as a stampless item. U.S.P.M. assigns it a Rarity factor of 10, and it is undoubtedly scarce.



Figure 19. Stencil postmark from UPPER JAY, N.Y. on flap side of envelope originating in Albany, N.Y. and there cancelling three 3¢ 1861s; Color: black with a distinct metallic sheen; also two "stencil impressions" of the name of the postmaster at Upper Jay, Benjamin Wells.

WORCESTER, N.Y.

Characteristics: Circular, outer line comprised of 10 thin segments; 31mm.; brownish black. **Use:** Stampless: Sept. 3, 1839, June 26, 1840, Mar. 31, 1842. **Notes:** Part of a fairly recent "find." Two covers were sold in the Nov. 6, 1981 David G. Phillips Sale (Lots 122 & 123), and still another was sold as Lot 93 in the David G. Phillips Sale of Jan. 28, 1983. The simple design of this marking, here illustrated as Figure 20, closely resembles those of several other N.Y. towns, as has been previously noted.

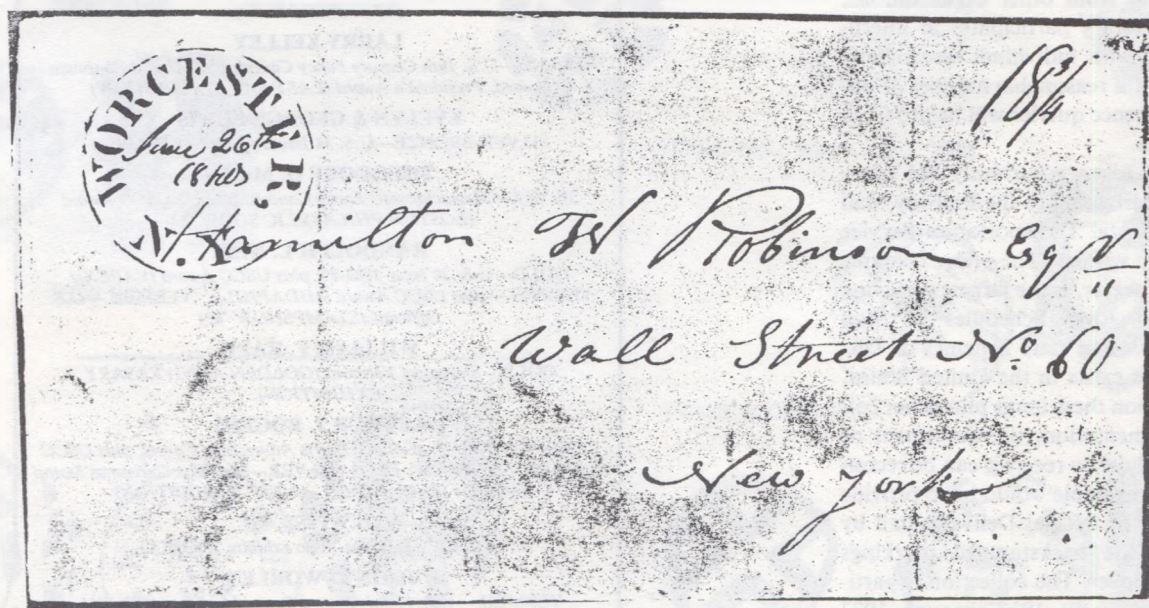


Figure 20. Stencil postmark from WORCESTER, N.Y. on folded letter, dated June 26th, 1840; Color: brownish black, manuscript date and "18 3/4" in black; the design of this postmark is quite similar to those from several other N.Y. towns: Durham, Jacksonboro, Richfield and Stamford.

(To be continued.)

AN OVERVIEW OF THE RAILWAY MAIL SERVICE LIBRARY

by Dr. Frank R. Scheer

To assist the student of route agent and railway post office history, a major collection of materials pertaining to these topics exists for their use. Appropriately named the "Railway Mail Service [RMS] Library," it is equipped to provide support for philatelic research and provide reference answers for questions dealing with the transportation and distribution of mail between 1864 and 1977.

The RMS Library has grown out of the AmerPO ("American RPO") Society Library, which was established by Bryant A. Long in 1950. After a period of stagnation and change of ownership, the core collection has been acquired by myself and is being greatly expanded in scope and coverage. The RMS Library is a member of the American Library Association and the American Philatelic Research Library. It is also a nonprofit corporation chartered in Florida.

As with most philatelic libraries, the principal efforts are being devoted to organizing and cataloging the collection, a task that will take years. Although OCLC is beyond the reach of the RMS Library, I believe the response to the user can be as quick as those from larger libraries. The refined focus of the collection combined with the personal knowledge of the field by the curator permits a more useful response than can be secured within a similar time span from other organizations. The RMS Library participates in interlibrary loans; with individual researchers; free copies of a reasonable number of answers to reference queries will be provided upon request.

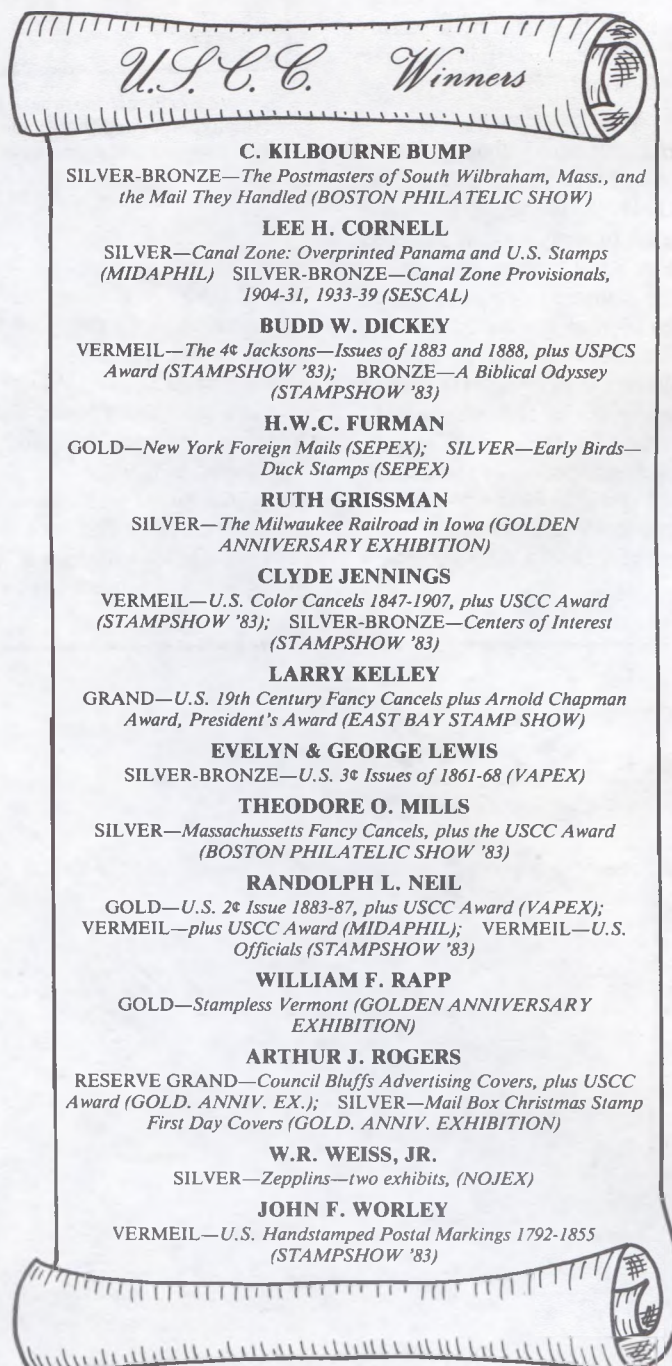
The RMS Library currently has every major title pertaining to the Railway Mail Service or Postal Transportation Service that has been written. The prime resource available, however, is the largest surviving collection of RMS Schedules of Mail Trains/Routes and state Schemes of Distribution that exists in the United States. By relying upon these items plus other collateral documentation, the movement of mail from sender to receiver can be reconstructed. An example would be to provide the handling of Special Delivery mail by interpreting the backstamped markings shown on a cover. The collection is particularly strong from 1920 through 1977 and is well adapted to this type of research, or inquiries into the changes in mail handling and schedule revisions over time.

To expand the coverage and variety of material made available to postal historians, I also seek to purchase or trade documents and artifacts which pertain to this phase of Post Office operations. Items which are acquired are maintained in a climate-controlled environment to preserve their condition. Rarer items or documents of significant historical interest are restored or treated to ensure their existence for the use of future researchers.

Inquiries pertaining to the holdings of the RMS Library or seeking assistance in particular research projects should be directed to:

Dr. Frank R. Scheer
Railway Mail Service Library
18 East Rosemont Avenue
Alexandria, VA 22301

Please include a self-addressed stamped envelope with your request to permit a quick reply. Also, if you expect to be in the Washington, D.C.-area, an appointment to use Library resources should be arranged at least two weeks in advance. Visitors giving advance notice are warmly welcomed.



CANCEL UPDATE

Readers are invited to report unlisted 19th century fancy cancels or additional information on the cancels listed in the generally used reference works.



From 1857 through 1869 the recorded radial geometrics are many and varied. Steubenville, O. is perhaps best known for its use of a variety of leaf cancels but also in use was this small, neat radial which has not yet found its way into the record books. The cover is franked with Scott #65, and is from the C.W. "Bert" Christian collection.

Illustrations of the following towns are from the 3¢ 1861 cover collection of Evelyn and George Lewis. All examples are in black.



NEW YORK



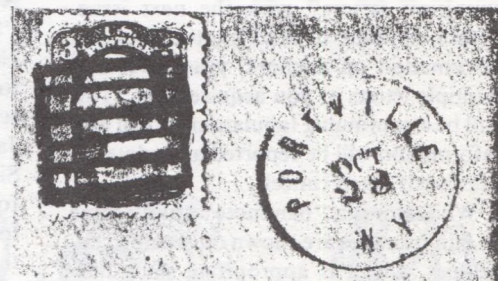
NEW YORK



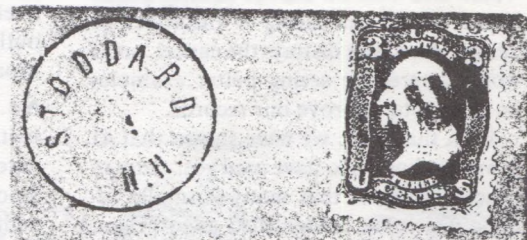
NEW YORK



HARRISBURGH PA.



PORTVILLE N.Y.



STODDARD N.H.



PINE BEND, MINN. JULY 1866



PITHOLE CITY PA.



NEW YORK



FOR LOVE OF A CANCEL by Alyce Evans

YEAR DATES ON BANKNOTE ISSUES *A Continuation*

We had planned to initiate the study of "multiple letters on banknotes" in this issue, but enough additional "year dates" were received (nearly all were from **Norman Brassler**, bless him!), so we will extend our study on these dates and begin "multiple letters" with the next issue. Please continue to send photocopies and information on anchors, year dates and multiple letters as you acquire them. This will be a continuing tabulation and all new information will be reported as updates to previously listed cancels.

While this is a "banknote" study, some of our examples are shown on stamped envelopes, which is appropriate since they were used during the banknote period and it's reasonable to assume that these cancels would also exist on stamps of the period. However, the embossing of the envelope design sometimes distorts the cancel, and I would appreciate seeing better examples on stamps to improve our records.

With this issue, we have shown that 41 towns are known to have used year dates as cancels. At least that many examples remain which are unidentified as to origin, so we've quite a way to go before this study is complete.

No. 31 MATTAPOISETT, MASS., negative "76" on 3¢ green cover dated Jul 10. Source: Norman Brassler. We've previously reported positive year dates from this town for the years '77, '78 and '81. Do covers exist which fill the hiatus between '78 and '81? The same postmaster, William E. Sparrow, was responsible for all the year dates, as he served from 9/26/'66-6/28/'93.

No. 32 NEWTON, N.J., negative "77" (one "7" inverted); on 3¢ green entire dated Nov. 5. The front docketing reads "Ans. Nov. 5, 1877." Source: Bill Stearns. Perhaps the postmaster, Wm. R. Mattison, carved the 7's this way intentionally, so that one of the sevens would always appear readable, no matter which way he struck it. Or, if it was a mistake, did he carve another, since this is a rather simple design to execute. Does anyone have an example of Newton, N.J. with a new design? This cover is addressed to Ham-burgh, 30 miles distant and received extraordinary handling as it was posted at Newton on Nov. 5, was received at Ham-burgh and was answered, all on the same day.

No. 33 SOUTH ORANGE, N.J., negative "82" on #207 cover dated Mar 2. Source: Norman Brassler.

No. 34 NASHVILLE, TENN., negative "83" on #207 cover dated Jan. 6. Source: Norman Brassler. This cover is addressed to Russellville, Kentucky and has the Russellville receiving mark on the front, dated Jan. 7, 1883. Another cover from an R.A. Siegel Auction 5/28/74 is shown on Jan. 2, four days earlier. These two cancels appear to be different carvings since the lines on the earlier one are much broader than on the Jan. 6 example. Perhaps on the thin-line example, the cavities had become filled with ink or debris. I consider this unlikely, due to the even appearance of the outline. Also, a negative cancel tends to broaden with wear, in most cases.

No. 35 NEW BRITAIN, CT., "87" (with "7" reversed) on 3¢ green cover dated Feb. 6. Source: Norman Brassler. Another example of a forgotten rule that a whittler must remember to both think and carve in reverse. This cancel is so smudged that it is difficult to determine if a bar extends along the top and bottom. Does anyone have a better strike?

No. 36 ? CORINTH, VT., "96" in circle on piece dated Mar 9 1896. Source: Norman Brassler. The first part of the town name has been clipped off, leaving only a "T" which indicates it is probably either East or West Corinth. Who can help decide which?

No. 37 NATICK, MASS., negative "1776" on a background outline of what is commonly thought to be Independence Hall; on #158 cover dated Mar 31. Source: R.A. Siegel auction 8/27/74. This oversized cancel is impossible to capture on a single stamp. The tracing shown here is from a composite of my own two stamps, happily, each portrays a different half of the design.

No. 38 FULTON, N.Y., "1870" on 3¢ entire dated Sep 19. Source: Norman Brassler.

No. 39 LANCASTER, PA., negative "1870" on U59 cover. Source: Norman Brassler.

No. 40 MARSEILLES, ILL., "1871" between two semi circles on U25, dated 23 Dec. Source: Norman Brassler.

No. 41 NEWARK, N.(?), "1871" between bars on 3¢ entire dated Apr 10. Source: Norman Brassler. I believe this origin is New Jersey, however it could be New York, as another member reported he has an "1871 between bars" on an entire dated May 23 from Newark, New York. A copy of this member's New York cover might solve this dilemma.



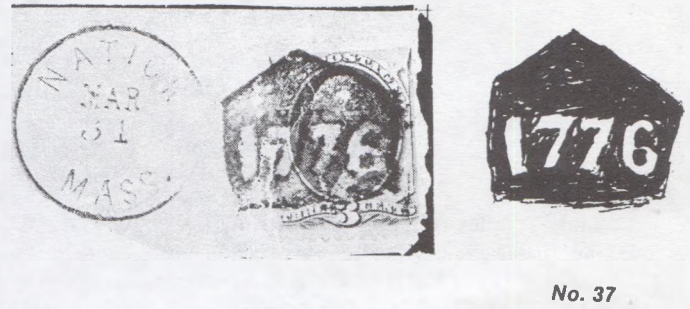
No. 31



No. 32



No. 33



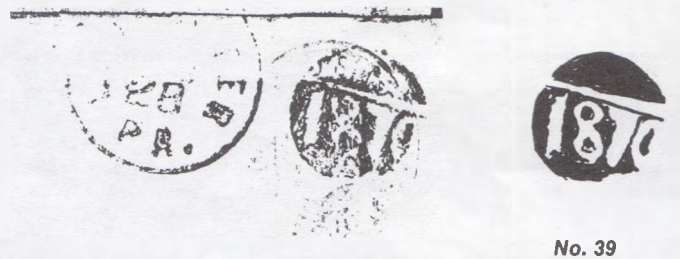
No. 37



No. 34



No. 38



No. 39



No. 35



No. 40



No. 36



No. 41

Walter D. Wesson's Time-On-Bottom (TOB) Duplex Hand-Cancellers, Part 8

by Theodore W. Bozarth

PENNSYLVANIA

City	Willard #	Killer Type ¹	E.R.P. ²	L.R.P. ²
Philadelphia	1268 var.	G (2) (Fig. 39)	Mar 20, 82	Feb 3, 83

A "mule" duplex resulting from mating a Wesson TOB CDS with a Goldsborough style killer (triple circle with numeral in center). (See Goldsborough advertisement reproduced on page 118 of Vol II of Willard. A more accurate copy will be found on the cover of POSTAL MARKINGS for Dec 20, 1937, Vol 7, No 7.) Number "2" only seen to date.

1268 var.	H (1)	Apr 3, (83)	Oct 23/91
1268	H (2)	Jul 27, 83	Oct 17, 84
1268 var.	H (3) (Fig. 40)	Oct 20, 83	Sep 1, 85
1268 var.	H (4)	Aug 24, 83	May 21, 85

Wesson seems to have produced at least two Philadelphia CDS with a curious error: the two letters of the state abbreviation are widely spaced and there is a period after both "P" and "A." The example shown in Fig. 40 has the "AD" of "PHILADELPHIA" closely together and was used with killer "4" in 1883 and killer "3" in 1885. (See H (10) below.)

1268 var.	H (5, upright)	Apr 17, 83	Apr 17, 83
1268 var.	H (5, slanted)	May 1, 83	Jun 26, 84

The upright "5" is 6 mm tall, the slanted "5" is 7 mm in height.

1268 var.	H (6)	Jun 22, 83	Dec 19, 84
-----------	-------	------------	------------

Majorie J. Sente showed a nice example of this marking on a First Day Cover of the 2¢ red brown, Scott #210, in *LINN'S STAMP NEWS* for Sep 26, 1983, page 43.

1268 var.	H (7)	Feb 23, 84	Aug 7, 85
1268 var.	H (8)	Dec 6, 83	Aug 24, 88
1268 var.	H (9)	Apr 19, 83	Aug 19, 85
1268 var.	H (10) (Fig. 41)	Oct 3, 83	May 5, 85

Second variety of the "P.A." error; "D" is here centered between "A" and "E" of "PHILADELPHIA." (See H (4) above.)

1268 var.	H (11)	Nov 23, 83	July 16, 85
1268 var.	H (12)	Oct (4), 83	Aug 20, 85
1268 var.	H (13) (Fig. 42)	May 25, 83	Jul 14, 84

Fig. 42 is not a forerunner of the exact-time CDS found on Time Marking-Cummins machine cancels, but is apparently the result of a careless postal clerk inserting a double-digit date into the minute slot.

1268 var.	H (14)	Apr 14, 83	Aug 21, 85
1268 var.	H (15) (Fig. 43)	Oct 9, 83	Jul 6, 85

The correct minute digits were inserted 90° counter-clockwise here. The square base of the changeable slugs apparently permitted them to be inserted in any of four positions, but such errors are rarely found, in sharp contrast to the frequently seen inverted dates of later years.

1268 var.	H (16)	Apr 30, 83	Dec 10, 84
1268 var.	H (17)	Jun 26, 83	Aug 5, 85
1268 var.	H (18)	Oct 13, 83	Sep 15, 84

In addition to the eighteen numbered duplex cancellers presumably made for the Main Post Office, Wesson also produced seven lettered cancellers for the larger Philadelphia postal stations and seven companion "REC'D" CDS without killers. An 1883 account, "The Philadelphia Post Office," stated: "Besides the central office there are twenty-six sub-stations located in different sections of the city, the largest of which are the West Philadelphia, Germantown, Manayunk, Frankford, and Richmond offices." The five



Figure 39



Figure 40

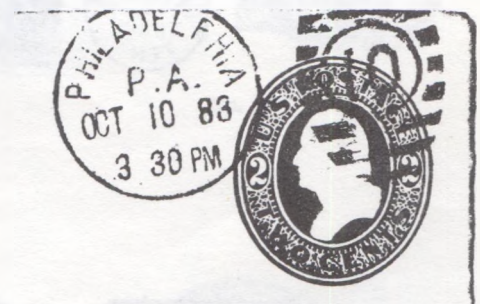


Figure 41



Figure 42

Continued on next page

UNIONE POSTALE UNIVERSALE
 CARTOLINA ITALIANA PER L'ESTERO
 CENTESIMI DIECI

84
 De Mrs. J.
 34 & Race St.
 Philadelphia, Pa.
 N.B. Su questo lato non deve
 scriversi che il solo indirizzo

stations named, plus Chestnut Hill and Falls of Schuylkill, seem to have received Wesson TOB cancellers sometime after the Main Post Office obtained their eighteen numeral markers. In alphabetical order:

B—West Philadelphia	E—Richmond	F—Frankford
G—Germantown	H—Chestnut Hill	I—Manayunk
Z—Falls of Schuylkill		

Philadelphia—B	1271	H (PA) Fig. 44	Jun 4, 84	Jan 28, 89
Philadelphia—E	1271 var.	H (PA)	Apr 15, 86	(May 28, 87)
Philadelphia—F	1271 var.	H (PA)	Mar 12, 87	Oct 12, 87
Philadelphia—G	1271 var.	H (PA)	Sep 6, 84	Jul 12, 89
Philadelphia—H	1271 var.	H (PA)	Apr 14, 85	Jul 25, 88
Philadelphia—I	1271 var.	H (PA)	Dec 18, 83	Feb 17, 85

Figure 43

E.R.P. shown in Willard, Vol I, page 128, fig. 157.

Philadelphia—Z	1271	H (PA)	Aug 20, 86	May 2, (90)
REC'D PHILA—B	(None)	(None) (Fig. 45)	Oct 3, 83	Jan 27, 94
REC'D PHILA—E	(None)	(None)	Feb 17, 85	May 4, 89
REC'D PHILA—F	(None)	(None)	Jan 21, (87)	Mar 14, 89
REC'D PHILA—G	(None)	(None)	Mar 26, 84	Mar 6, 88
REC'D PHILA—H	(None)	(None)	Feb 21, 87	Sep 26, 89
REC'D PHILA—I	(None)	(None)	Oct 14, 90	Oct 14, 90
REC'D PHILA—Z	(None)	(None)	May 6, 90	May 6, 90
Weatherly	1358	H (W)	Not seen	Not seen

This phantom TOB was apparently either misidentified by Burr, or Willard misread his data. The illustration in Willard seems to be a partial strike of the Westerly, RI, TOB. Apparently the Wesson device made for Westerly was defective, assuming that it was a duplex canceller like the others, and the killer is frequently found misaligned with the CDS and with varying distances between them. This may have contributed to the confusion noted.

¹H for 9 Horizontal bars in ellipse; V for 6 Vertical bars in ellipse; G for Goldsborough style (3 concentric circles)—followed by letter(s) or numeral of killer in parenthesis.

²E.R.P., Earliest Reported Postmark; L.R.P., Latest Reported Postmark. Date within parenthesis is NOT in CDS but obtained from backstamp, docketing, or enclosure. Entire date within parenthesis has been reported by reliable source but not seen by compiler.

Robert J. Stets, long active as a student of Philadelphia postal history, made numerous and valuable contributions to this section, not the least was his enlistment of the aid of members of the Pennsylvania Postal History Society. As a result, E.P. Babcock, Bertha S. Davis, William H. Heisler, Laurance E. Olah, and Harry T. Yeager submitted additional examples. Postal history dealer, Gregory F. Sutherland, generously provided Philadelphia TOB at nominal cost. Robert J. Payne and A. Burns Speer also contributed to this section.

References:

(Anon.), "The Philadelphia Post Office," in *Quaint Corners In Philadelphia*, (Philadelphia: John Wanamaker, 1883), pp. 207-215.

Stets, Robert J., "The Letter Station Cancels of Philadelphia," in *Philadelphia Postal History*, (Philadelphia: SEPAD, 1980), pp. 36-45. Available from SEPAD, P.O. Box F, Horsham, PA 19044, or from the author.

Willard, Edward L., *United States Two Cent Red Brown Of 1883-1887*, Vol I & II, (New York: Lindquist, 1970), pp. 128 of Vol I, pp. 144-146 and 157-158 of Vol II. (A leading dealer in philatelic literature says that this book is nearly sold out at the publisher. Don't delay if you want to get a copy at the original publisher's price.)

Belated Footnote to Part 4: The Wesson TOB for Putnam, CT, is found coupled with an attractive fancy killer reportedly Masonic in origin and showing the word "Jehovah" in Hebrew in an oval. See *19th Century United States Fancy Cancellations* by Herst-Sampson (Shrub Oak, NY: Herst, 1963), page 63, fig. 315. (Fig. 46).

(Theodore W. Bozarth, RFD 2, Box 168, Titusville, NJ 08560)

(To be continued.)

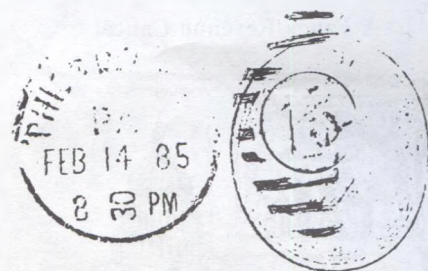


Figure 44

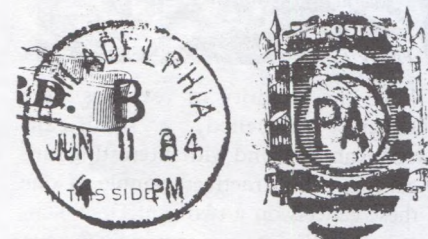


Figure 45



Figure 46

An Early Business Reply Envelope

Warren Tingley shares an 1895 cover which is an early forerunner of the modern day business reply envelopes (Fig. 1). The press printing, which Warren believes was done in one application, is in red on a blue envelope. The statement in the left corner reads, "When used in sending remittance for the bill received with it, this envelope may be mailed (in West Superior only) without prepaying the postage. DO NOT write your name or address hereon." The circular marking on the right (Fig. 2) of the envelope reads POSTAGE COLLECT 2 CENTS on a background of fine parallel lines. The HELD FOR POSTAGE handmarking is grey-violet. The two cent postage due stamp is cancelled with an ink smear which does not tie the cover, and Warren feels it is not a precancel. The cds reads West Superior, Wis./July 9/2 PM/'95 with an ellipse killer of 1 in a concentric circle, type H6BL-1, both in black.

The Superior Water, Light & Power Co. evidently had an agreement with the post office which would affix a postage due stamp and hold it for payment by the company, as the then current postal regulations required pre-payment of postage before delivery.

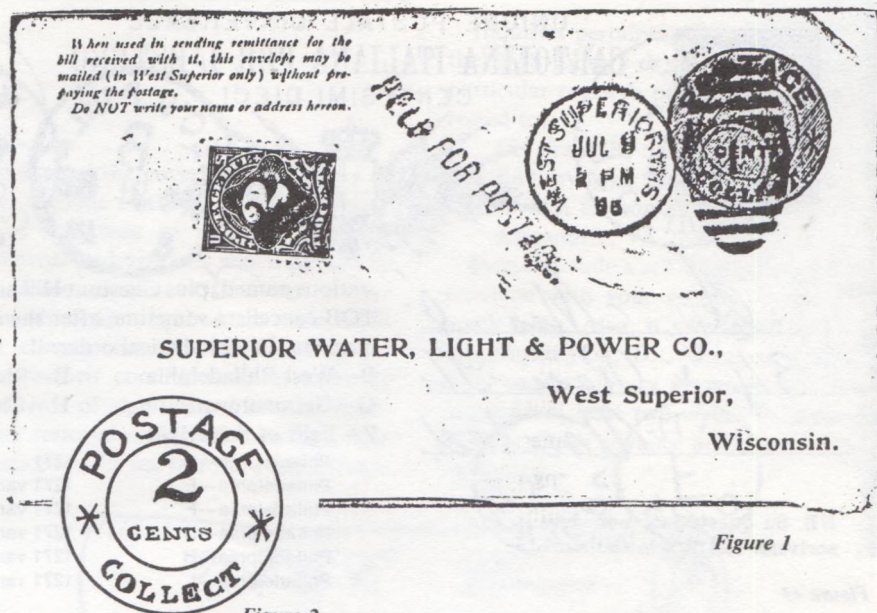


Figure 1

Figure 2

Harry Konwiser mentioned this Postage Collect 2 Cents marking in his Jan. 10, 1953 column in *Postal Markings*, stating "it was used during the 1895-96 period when the Post Office Dept. stopped the practice, no doubt because of the time-loss involved in applying postage due stamps to the envelopes."

While possibly ahead of its time, the idea of a postage-free reply was a good one, evidenced by the abundant use now seen daily in the mails. Does anyone have additional information pertaining to the early use of business reply envelopes such as an earlier example or a postal regulation?

A Fancy Revenue Cancel

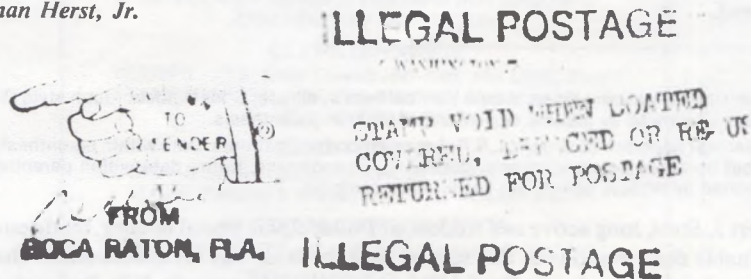


Figure 1.

While the majority of revenues were manuscript cancelled, a significant number can be found with interesting fancy cancels. An attractive example of one of these cancels on a two-cent Documentary revenue (Fig. 1) was sent in by **George W. Aschenbrenner**, 2933 Mackey Dr., Fallbrook, CA 92028. This stamp appears on a Bank check from the Bank of Commerce, Louisville, KY. dated June 18, 1901. George states that one of his many side lines of collecting is bank checks, mainly with imprinted revenues, and he felt the cancel of the Eagle over an unusual type PAID was so "neat" that he had to share it. Do any of our other members have unusual fancy cancels on revenues to share with us?

ILLEGAL POSTAGE

by Herman Herst, Jr.



Collectors of modern postal markings have a new one to look for: ILLEGAL POSTAGE. It is not going to be as rare as ILLEGAL STAMP or OLD STAMPS NOT RECOGNIZED, but it is a first cousin to those scarce items.

One may change his mind about mailing a letter, and soak the stamp off and put it on another envelope, as long as it is not postmarked. But never, but never, take a scissors, and cut the stamp out and paste stamp and envelope remainder on another envelope. This is illegal, and the postal laws and regulations definitely forbid it.

I was writing to a friend and right in my home town, and found that the envelope that I had addressed was not large enough

for the contents. I addressed one in the proper size, franked it, and posted it.

Not wishing to lose the postal value of the 20¢ stamp, I cut it around, and put it on another envelope. The envelope was returned to me not only with the ILLEGAL POSTAGE handstamp, but one reading STAMP VOID WHEN COATED, COVERED, DEFACED, OR RE-USED. RETURNED FOR POSTAGE.

You are right. I soaked it off and put it on still another envelope. The third time it worked fine. As long as the stamp had never done postal use, the Postal Service ought to accept its validity. They finally did, as long as the little bit of envelope from the first cover did not show.

WAREHAM, MASS.—SWIFT'S BEACH...a case for further study

by John W. Koontz

Frederick Langford in his *Standard Flag Cancel Encyclopedia* lists two different flag cancel (type A-14) varieties used at Wareham, Mass.:

1. Wareham 1924-1925.
2. Wareham 1925-1926—different die (Figure 1).

Geschwindner, Morris and Koontz, in their *Time Marking Co.—B.F. Cummins Co.*, note:

1. Wareham, Mass 1912-1923 type F-131 (Figure 2).
2. Wareham, Swift's Beach Sta. 1931-1935 type Fd-131 (Figure 3).

The illustrated letter (Figure 4) from the postmaster/proprietor of the sub post office is most informative about Swift's Beach. However, several questions still need some answers.

1. What type of cancelling machine, if any, followed the flag cancel machine of 1926 at Wareham, Mass.?
2. With only a four month "season" at Swift's Beach, why would the postmaster buy a cancelling machine for Swift's Beach?
3. What is the earliest known date of use for a Cummins cancel from Swift's Beach?
4. What were the dates of operation of the sub post office at the Swift's Beach Station? The earliest I have seen is July 2.

Your thoughts and xerox copies of new covers/cards will be most welcome! John W. Koontz, P.O. Box G, W. Bowie Sta., Bowie, MD 20715.

COTTAGES TO RENT AND CARED FOR SUB POST OFFICE ON THE SHORES OF BUZZARDS BAY
BEACH EXPRESS TELEPHONE CONN.

SWIFT'S BEACH GENERAL STORE

Albert B. Cleveland, Prop.

GROCERIES AND PROVISIONS SOUVENIRS AND TOYS

ICE CREAM, SODA AND CONFECTIONERY

SWIFT'S BEACH, WAREHAM, MASS.

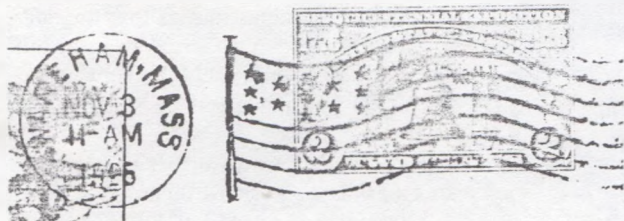


Figure 1

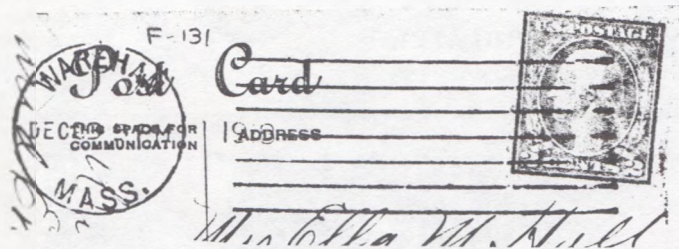


Figure 2

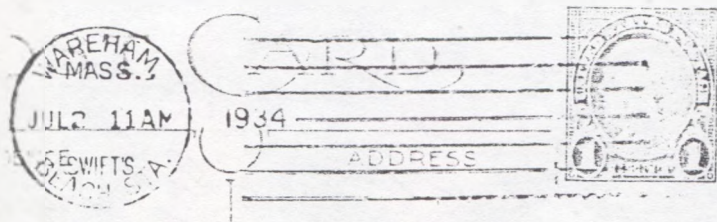


Figure 3

November 2, 1926.

Mr. Fernan C. Nahl,
6043 Harwood Ave.,
Oakland, Cal.

Dear Sir:

In answer to your card I am writing as follows.

The Post Office is open for 4 months. From June 1st through September 30th. There are about 160 cottages, a summer colony. It is situated at the head of Buzzards Bay and 50 miles from Boston.

The center of the town of Wareham is 2-1/2 miles from the beach and is at the head of the Wampanoag River. It is a town of 7,000 inhabitants. There are a few mills the largest being a Bleachery. There are also many large cranberry bogs and many carloads of cranberries are shipped from here every fall.

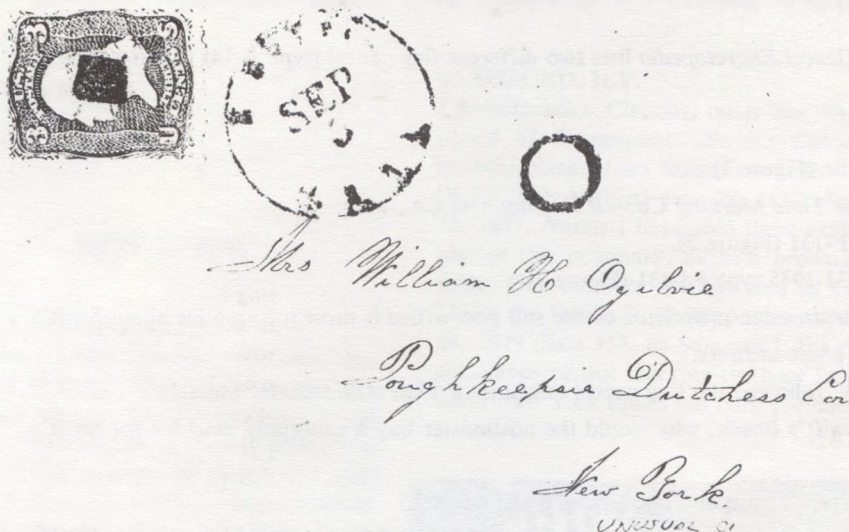
Very truly yours,

ABC/AB.

Albert B. Cleveland

Figure 4

QUESTION CORNER



MIDNIGHT POSTMARKS

Henry Beecher (P.O. Box 1377, Ashland, OR 97520) asks the following question: "How would the postmark read on a cover posted at the latest time the old rate applied, if the new rate became effective 12:01 AM (in the 1920s U.S.). I know that then, when first class post offices changed the postmark each half hour, that at 1 PM the postmark was set to 1:30 PM. How did the time read in postmarks to mean midnight and noon? From the half hour in advance rule, I assume that for a midnight hour indicator, the date shown was for the day just ending. I'd like citation of official rules on the matter or a reliable philatelic reference, especially if it includes illustrations of noon and midnight postmarks.

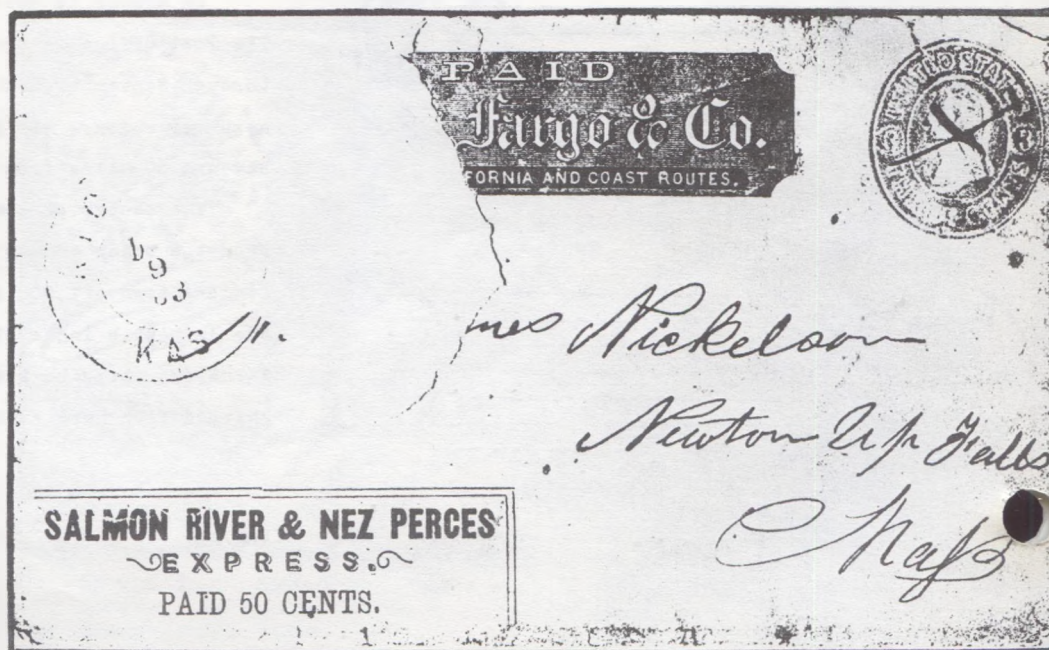
ERRATA: An 1880 date was given for the Stonington cds in the Question Corner, last issue. Obviously, this was in error, since the 2¢ green, #213 stamp shown with it was not issued until Sep 10, 1887. The date should have read 1889.

VANDALS OF PHILATELY

by Prof. C.S. Thompson, Jr.

The Salmon River & Nez Perces Express printed their franks in the lower left corner of Wells, Fargo & Company covers. According to M.C. Nathan, in his book "Franks of Western Expresses," this express operated from Walla Walla, Washington to the Salmon River and Nez Perces mines of Idaho in 1861 and 1862. It is connected with Wells, Fargo & Company at Walla Walla.

This cover indicates that the express was still carrying mail in 1863, as attested to by the incomplete CDS of Atchinson, Kansas. I do not know what stamp was so rudely torn from this cover by a philatelic vandal, but perhaps one of our readers can clear up the mystery. It really is a shame that it was vandalized in the past as these small express company franks are so difficult to obtain.



A STRANGE TRIPLEX MARKING ON THE 3¢ 1861

The cover illustrated shows a CDS with cancellers arrayed on either side (center to center distances of 31mm), one a solid rectangle about 5½x6½mm and the other a circle about 10-11mm at the extreme periphery. The stamp is an attractive deep red brown shade resembling the ones seen on some dated covers of 1863 vintage. The town and state are very poorly registered, but I believe them to be E. DAYTON MICH.

What would be the reason to create such a peculiar device? During the 1860s, duplex markings became prevalent as a convenient way to fulfill the postal regulations that the CDS not be used as a canceller. However, these devices had implicit limitations. One was the awkwardness in cancelling stamps on the left of an envelope without inverting the CDS. The introduction of a two "handed" device, as I believe this product to be, would alleviate this problem. The approximate 45 degree angling of the CDS relative to the line connecting the killers means that it could also be fully readable if struck in a vertical orientation, which would be convenient for certain arrangements of stamps and address.

Has anyone seen a further example of this marking?—Bernard Biales, P.O. Box 598, Jamaica Plain, MA 02130.

NEW MEMBERS

We welcome the following:

- 1550 Clay Siccardi, Box 10878, Costa Mesa, CA 92627—*Watercraft Philately*.
- 1551 Edwin Carpenter, P.O. Box 1380, Sag Harbor, NY 11963—*Worldwide*.
- 1552 Norman D. Crawford, Jr., P.O. Box 132, Manette Sta., Bremerton, WA 98310—*United States Dealer*.
- 1553 M.W. Martin, P.O. Box 15518, Columbus, OH 43215—*Dealer*.
- 1554 Lewis Ellman, 101 W. Lakeshore Dr., Carmel, NY 10512—*United States*.
- 1555 Carmen McKee, 140 McIntosh Rd. #306, Kelowna, B.C. V1X 2C4 Canada—*World Wide, used prior to 1941; SOTN U.S. (esp. Idaho); SOTN Capital Cities of the World; After 1940: U.S., Canada, U.S. Precancels (esp. Idaho), British Commonwealth*.
- 1556 Charles P. Flaugh, 1094 Oakbrooke Dr., Medina, OH 44256—*Fancy Cancels*.
- 1557 Bruce London, Dept. of Sociology, Fla. Atlantic Univ., Boca Raton, FL 33431—*19th Century Fancy Cancels*.
- 1558 Harold V. Williams, 15039 Knolson, Livonia, MI 48154—*Machine Cancels; Postal History*.
- 1559 Norman W. Johanson, 135 Princeton Dr., Huntington, CT 06484—*Postal History; Early US Postal Markings; Registered Mail Usage; Express Mail*.
- 1560 Edward D. Piper, 119 Brandon Rd., Butler, PA 16001—*U.S.; First Day Covers; Nuclear Sub. Covers; L.&C. Souvenir Cards*.
- 1561 Irving Bayer, P.O. Box 18032, Cleveland Hts., OH 44118—*Dealer*.
- 1562 Howard L. Rust II, P.O. Box 742, Lima, OH 45802—*Dealer*.
- 1563 Fred Ekenstam, 1009 S. Aspen Ct., Broken Arrow, OK 74012—*Gen. U.S.; Postal Stationery; Postal Cards; Leavitt Machine Cancels; Texas County & Postmaster Cancellations*.
- 1564 John M. Howell, P.O. Box 669, Little-rock, CA 93543—*World Wide Stamps, Covers, Postmarks, FDC, Mailer's Postmarks, Local Posts, Pictorial Cancels, Philatelic Literature, Maps*.
- 1565 Basil B. Kirby, Jr., 919 Miller Creek Rd., S.E., Lenoir, S.C. 28645—*XF—Superb Stamps, Mint Condition; Spec. First Day Cancellations*.
- 1566 Richard J. Marek, 124 6th St., Wilmette, IL 60091—*VT Postal History*.

REINSTATED:

- 1233 Raymond F. Longobardi, 213 F Thompson St., East Haven, CT 06513—*U.S. Covers, Cancellations, Postal Stationery, Stamps, Stampless covers*.
- 928 John R. Biddle, Box 14844, Columbus, OH 43214—*Cover Dealer*.

CLOSED ALBUM:

- 741 Ted L. Killish

CHANGE OF ADDRESS:

Donald A. Chafetz
c/o Exxon Engr. Co.
P.O. Box 101
Florham Park, NJ 07932

Henry Chlanda
P.O. Box 272
Vauxhall, NJ 07088

Bill Claghorn
1440 San Pablo Ave. GE51
Berkeley, CA 94702

John F. Haefeli, Jr.
P.O. Box 8645
Albany, NY 12208

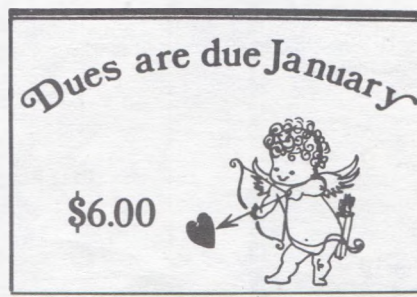
Daniel Knowles
9710 71st Ave.
Forest Hills, NY 11375

Carl J. Murphy
2210 Nut Tree Loop
Olympia, WA 98501

L. Gene Phillips
P.O. Box 435
Kunkletown, PA 18058

Ernest S. Webb
6811 Emerald Cove
San Antonio, TX 78239

David S. Zubatsky
150 Corbin's Mill Dr.
Dublin, OH 43017



THE MAIL BAG

Dear Alyce:

I am writing concerning the article in whole #177 by Bert Christian. He stated that the Leominster "3" was probably a precancel. However, an article by Lester Downing in *The Chronicle* #48 proves that, in fact, the Leominster "3" was not a precancel.

Mr. Downing had reason to doubt that the "3" was a precancel. However, he could not prove this until he obtained a cover with an enclosure. I will quote from the article: "A carbon rubbing of the upper right portion of the enclosure discloses an impression of the '3' as it appears on the stamp. Clearly this '3' was struck after the stamp was affixed to the cover or the enclosure would not bear this impression."

Sincerely,

Larry Kelley

ED: The inside of one of my Leominster "3" covers strongly shows the impression of the "3," which indicates the "3" was struck by a metal canceller after the stamp was applied to the envelope. This in no way precludes the possibility that the postmaster precancelled sheets of stamps to apply on letters franked at the post office. A very careful study of the covers from this town is needed and could reveal that the "Leominster 3's" should be classed as "provisional precancels"—stamps precanceled by a device also used for post-cancellation, a category in which the quill-penned manuscript Weston "W" fits, which also needs an in-depth study.

PROJECT RESEARCH

COUNTY & POSTMASTER POSTMARKS

Fred Ekenstam is updating the Edith Doane listing of the County & Postmaster townmarks for Texas, which was published in *Billig's Philatelic Handbooks*, #s 10 & 31. Members who have examples are urged to send photocopies to Fred at 1009 S. Aspen Ct., Broken Arrow, OK 74012.

UPDATING LINN'S...

Chester Wilcox, R.D. 1, Box 113, Richford, NY 13835, has agreed to take over the "PAID PROJECT" if no one else is willing. Those interested in contributing to his list of towns which used the various types of PAIDS can send photocopies of their 1861 3¢ covers to Chet at the above address.

LIBRARY UPDATE

CITY CROSS-INDEX FOR HERST-SAMPSON FANCY CANCEL BOOK

Thomas E. Stanton has produced an important adjunct to the Herst-Sampson book on *19th Century U.S. Fancy Cancellations*, in the form of a City Cross-Index. The Index is arranged alphabetically by city name and lists the number of cancels used by each town along with a brief description of each cancel, the Herst-Sampson number, and a coded number to show period of usage. This well-planned and thoughtful work is important as an aid to facilitate research on a cancel where the city of origin is known. Currently, the Index covers 50 typewritten pages; however, if sufficient interest exists, I plan to retype and photo-reduce the copy prior to placing it in the Library, and offer it to members for the cost of reproduction and mailing. Please let me know if you are interested in obtaining a copy of this Index.

Tom is a well-known philatelic author who recently co-authored a handbook, *The Street Railway Post Offices of Washington, D.C.* with another of our members, Robert Truax. Tom also, with George Turner, compiled and arranged the reprint of Elliott Perry's *Pat Paragraphs*, and we appreciate his generosity in sharing this Index with us.

FREE MONTHLY POSTAL HISTORY LISTS

A FREE 20 page list of several hundred U.S. covers, 1830s to the 20th Century, carefully described, conservatively priced, and guaranteed to meet with your approval, will be sent to interested collectors of U.S. Postal History, free of charge.

Drop me a line—the price is right!



(415) 726-9111

Jack Greenberg
President

- SINCE 1933 -

Trans Global Trading Co.

P.O. BOX 815
HALF MOON BAY, CALIFORNIA 94019

Dues are due January

\$6.00



Postal Covers MAIL BID SALES

POSTAL HISTORY SPECIALTIES
MILITARY & WAR COVERS
MARITIME, RAILROAD & AIR MAIL
PHILATELIC LITERATURE
POSTAL STATIONERY, ETC.

THEO. VAN DAM

P.O. BOX 26

BREWSTER, NY 10509

CLASSIFIED ADS:

CANAL ZONE COVERS WANTED! My wants include scarce to common post office cancellations, 1904 to 1979, especially certain slogan cancellations and WW II APO numbers 841 and 897. My want list is available.

Lee H. Cornell

2808 N. Athenian • Wichita, Kansas 67204

WANTED: THREE CO. & P.M. cancels from Delaware Co., New York.

- | | |
|-------------------------------|---------|
| 1. ARENA—E.A. Miller P.M. | CP |
| 2. ROCKRIFT—Delaware Co. | CP |
| 3. STOCKPORT STATION—Del. Co. | Octagon |

Harry Taber

Box 223 • Sidney Center NY 13839

A SERIOUS SPECIALIST NEEDS... Two-cent Brown (Sc.#210) covers with Alaska or Indian Terr. Use also Shanghai & N.Y. Supplementary Mail. Will also buy fancy cancels on this stamp & large lots of used singles. Send description and prices.

Randolph Neil

P.O. Box 7088 • Shawnee-Mission, KS 66207

WANTED

US ARMY Post Office covers of World War II, dated FIRST DAY OF USE. List Available.

Will pay a minimum of \$10 for every cover I can use.

A. Lewandowski

Box 1, New York, NY 10040